

**BALDOR • RELIANCE**

---

# Customer information packet

## HBEM2333T

44M 4P TEFC HOR 254T

Class - None

Division - Not Applicable

## Specifications

Enclosure	TEFC
Frame	254T
Frame Material	Iron
Frequency	60.00 Hz
Haz Area Class and Group	None
Haz Area Division	Not Applicable
Motor Letter Type	Three Phase
Output @ Frequency	15.000 HP @ 60 HZ
Phase	3
Synchronous Speed @ Frequency	1800 RPM @ 60 HZ
Voltage @ Frequency	460.0 V @ 60 HZ 230.0 V @ 60 HZ
Agency Approvals	CURUSEEV NEMA PREMIUM WEEE
Ambient Temperature	40 °C
Auxillary Box	No Auxillary Box
Auxillary Box Lead Termination	None
Base Indicator	Rigid
Bearing Grease Type	Polyrex EM (-20F +300F)
Blower	None
Current @ Voltage	36.200 A @ 230.0 V 38.000 A @ 208.0 V 18.100 A @ 460.0 V
Design Code	A
Drip Cover	No Drip Cover
Duty Rating	CONT
Efficiency @ 100% Load	92.4 %
Electrically Isolated Bearing	Electrically Isolated Bearings
Feedback Device	NO FEEDBACK
Front Shaft Indicator	None
Heater Indicator	No Heater

## Part detail

Revision	H
Type	AC
Mech. spec.	09T115
Base	
Status	PRD/A
Elec. spec.	09WGT597
Layout	09LYT115
Eff. date	12-06-2024
CD Diagram	CD0005
Poles	04
Leads	9#12
Proprietary	False
Created date	01-06-2022

High Voltage Full Load Amps	18.1 a
Insulation Class	H
Inverter Code	Inverter Ready
KVA Code	H
Lifting Lugs	Standard Lifting Lugs
Locked Bearing Indicator	Locked Bearing
Max Speed	2700 rpm
Motor Lead Quantity/Wire Size	9 @ 12 AWG
Motor Lead Termination	Flying Leads
Motor Standards	NEMA
Motor Type	0944M
Mounting Arrangement	F1
Number of Poles	4
Overall Length	23.36 IN
Power Factor	83
Product Family	General Purpose
Pulley End Bearing Type	Sealed Bearing
Pulley Face Code	Standard
Pulley Shaft Indicator	Standard
Rodent Screen	None
RoHS Status	ROHS COMPLIANT
Service Factor	1.15
Shaft Diameter	1.625 IN
Shaft Ground Indicator	No Shaft Grounding
Shaft Rotation	Reversible
Shaft Slinger Indicator	Shaft Slinger
Speed	1765 rpm
Speed Code	Single Speed
Starting Method	Direct on line
Thermal Device - Bearing	None
Thermal Device - Winding	None
Vibration Sensor Indicator	No Vibration Sensor
Winding Thermal 1	None
Winding Thermal 2	None

**Nameplate**

**NP4312A01A01L**

<b>CAT #</b>	HBEM2333T		<b>SER</b>		<b>CC</b>	010A	<b>WGT</b>		<b>LBS</b>
<b>SPEC</b>	09T115T597G1		<b>RATING</b>	40C AMB-CONT					
<b>HZ</b>	<b>VOLTS</b>		<b>AMPS</b>		<b>RPM</b>	<b>HP</b>	<b>SF</b>	<b>NEMA NOM. EFF</b>	
60	230/460		36.2/18.1		1765	15	1.15	92.4	
<b>PH</b>	3	<b>CL</b>	H	<b>CODE</b>	H	<b>DES</b>	A	<b>ENCL</b>	TEFC
								<b>IP</b>	54
								<b>PF</b>	83 %
<b>DE BRG</b>	6309		<b>ODE BRG</b>	6208		<b>FRAME</b>	254T		
<b>INV TYPE:</b>	<b>VPWM</b>	<b>SL HZ</b>	1.17	<b>CHP</b>	60	<b>TO</b>	90	1.5:1	
<b>WK2</b>	1.93	<b>LB FT2</b>	<b>MAX RPM</b>	2700	<b>CT</b>	6	<b>TO</b>	60	10:1
	14.6/7.3		<b>VT</b>	3	<b>TO</b>	60	20:1		
SFA 41.2/20.6									

YR

**AC Induction Motor Performance Data**

Record # 86504

Preliminary Data Sheet

Winding: 09WGT597-R002		Type: 0944M	Enclosure: TEFC	
<b>Nameplate Data</b>			<b>460 V, 60 Hz: High Voltage Connection</b>	
Rated Output (HP)	15	Full Load Torque	44.5 LB-FT	
Volts	230/460	Start Configuration	direct on line	
Full Load Amps	36.2/18.1	Breakdown Torque	154 LB-FT	
R.P.M.	1765	Pull-up Torque	67.2 LB-FT	
Hz	60 Phase	3	Locked-rotor Torque	83.5 LB-FT
NEMA Design Code	A KVA Code	H	Starting Current	129 A
Service Factor (S.F.)	1.15	No-load Current	7.32 A	
NEMA Nom. Eff.	92.4 Power Factor	84	Line-line Res. @ 25°C	0.57 Ω
Rating - Duty	40C AMB-CONT	Temp. Rise @ Rated Load	52°C	
S.F. Amps	41.0/20.5	Temp. Rise @ S.F. Load	64°C	
		Locked-rotor Power Factor	33.3	
		Rotor inertia	1.92 lb-ft <sup>2</sup>	

**Load Characteristics 460 V, 60 Hz, 15 HP**

% of Rated Load	25	50	75	100	125	150	S.F.
Power Factor	48	70	79	84	86	87	86
Efficiency	87.3	91.8	92.8	92.3	91.6	90.7	91.9
Speed	1792	1785	1777	1768	1759	1749	1761
Line amperes	8.45	11	14.3	18.1	22.2	26.7	20.5

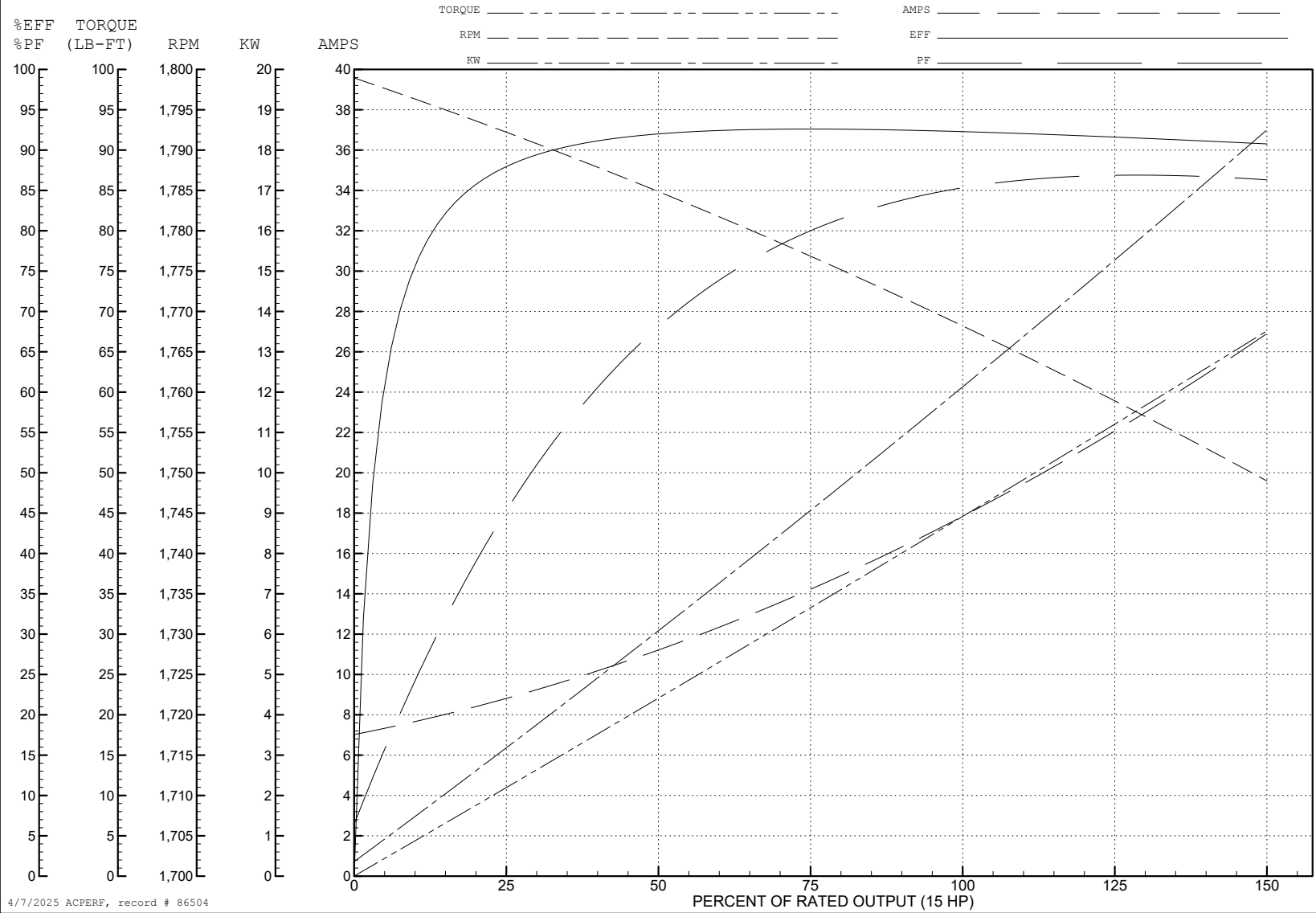
ABB Motors and Mechanical Inc.

WINDING # 09WGT597

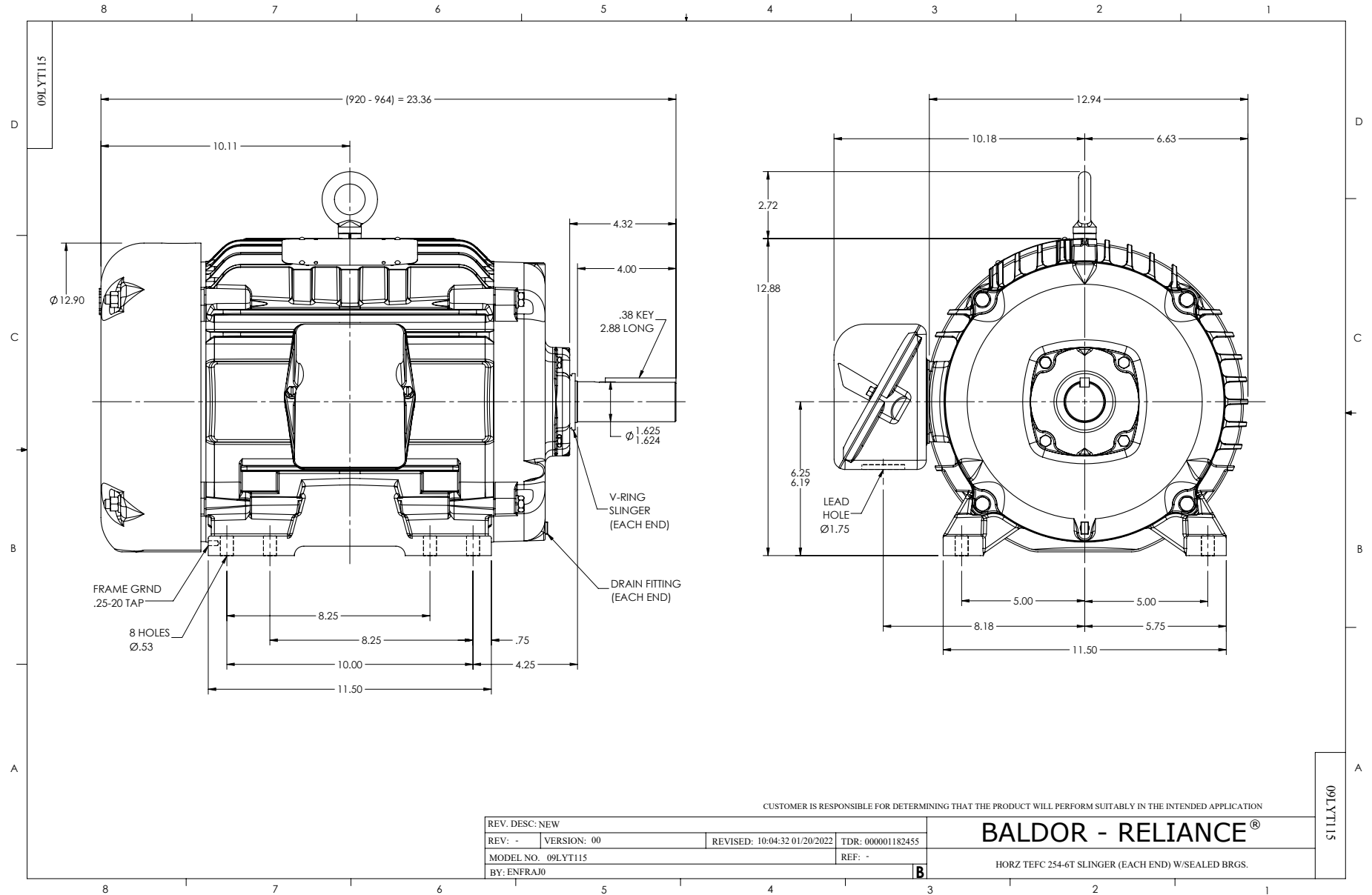
15 HP 3 PH 60 HZ 1765 RPM 460 V 0944M

Typical performance - not guaranteed values.

TORQUES (LB-FT): PO=154 PU=67.2 LR=83.5 LRA=129



4/7/2025 ACPERF, record # 86504



CD0005



LOW VOLTAGE  
(2Y)



LINE

HIGH VOLTAGE  
(1Y)



LINE

NOTES:

1. INTERCHANGE ANY TWO LINE LEADS TO REVERSE ROTATION.
2. OPTIONAL THERMOSTATS ARE PROVIDED WHEN SPECIFIED.
3. ACTUAL NUMBER OF INTERNAL PARALLEL CIRCUITS MAY BE A MULTIPLE OF THOSE SHOWN ABOVE.
4. LEAD COLORS ARE OPTIONAL. LEADS MUST ALWAYS BE NUMBERED AS SHOWN.

CD0005

REV. DESC: REVISE TO SHOW OPTIONAL COLORS			
REV. LTR: E	BY: JLP	REVISED: 01/19/99 10:15	TDR: 0171435
S00000		FILE: AAA00005140	MDL: -
		MTL: -	

**BALDOR ELECTRIC Co.**

3PH, DV, 9 LEADS