

BALDOR • RELIANCE

Customer information packet

IDDRPM5017504

1750HP, 1750, 600V, RL5035, DPFV, F1

Specifications

Enclosure	DPFV
Frame	RL5035Z
Frame Material	Exposed Laminations
Frequency	60.00 Hz
Output @ Frequency	1750.000 HP @ 60 HZ
Phase	3
Synchronous Speed @ Frequency	1800 RPM @ 60 HZ
Voltage @ Frequency	600.0 V @ 60 HZ
Agency Approvals	CCSA US
Auxillary Box	No Auxillary Box
Base Indicator	Rigid
Bearing Grease Type	Polyrex EM (-20F +300F)
Current @ Voltage	1512.000 A @ 600.0 V
Duty Rating	CONT
Feedback Device	ENCODER
Frame Prefix	RL
Heater Indicator	No Heater
High Voltage Full Load Amps	1512.0 a
Insulation Class	H
IP Rating	NONE
Motor Standards	NEMA
Mounting Arrangement	F1
Overall Length	77.32 IN
Product Family	General Industrial
Pulley End Bearing Type	Ball
Pulley Face Code	Standard
Service Factor	1.00
Shaft Diameter	4.250 IN
Shaft Ground Indicator	Shaft Grounding
Shaft Rotation	Reversible
Speed	1787 rpm
Starting Method	Full Voltage

Part detail

Revision	C
Type	AC
Mech. spec.	
Base	
Status	PRD/A
Elec. spec.	L9097A
Layout	622004-001
Eff. date	08-24-2023
CD Diagram	422927-001
Poles	04
Leads	
Proprietary	False
Created date	11-09-2021

Thermal Device - Bearing

None

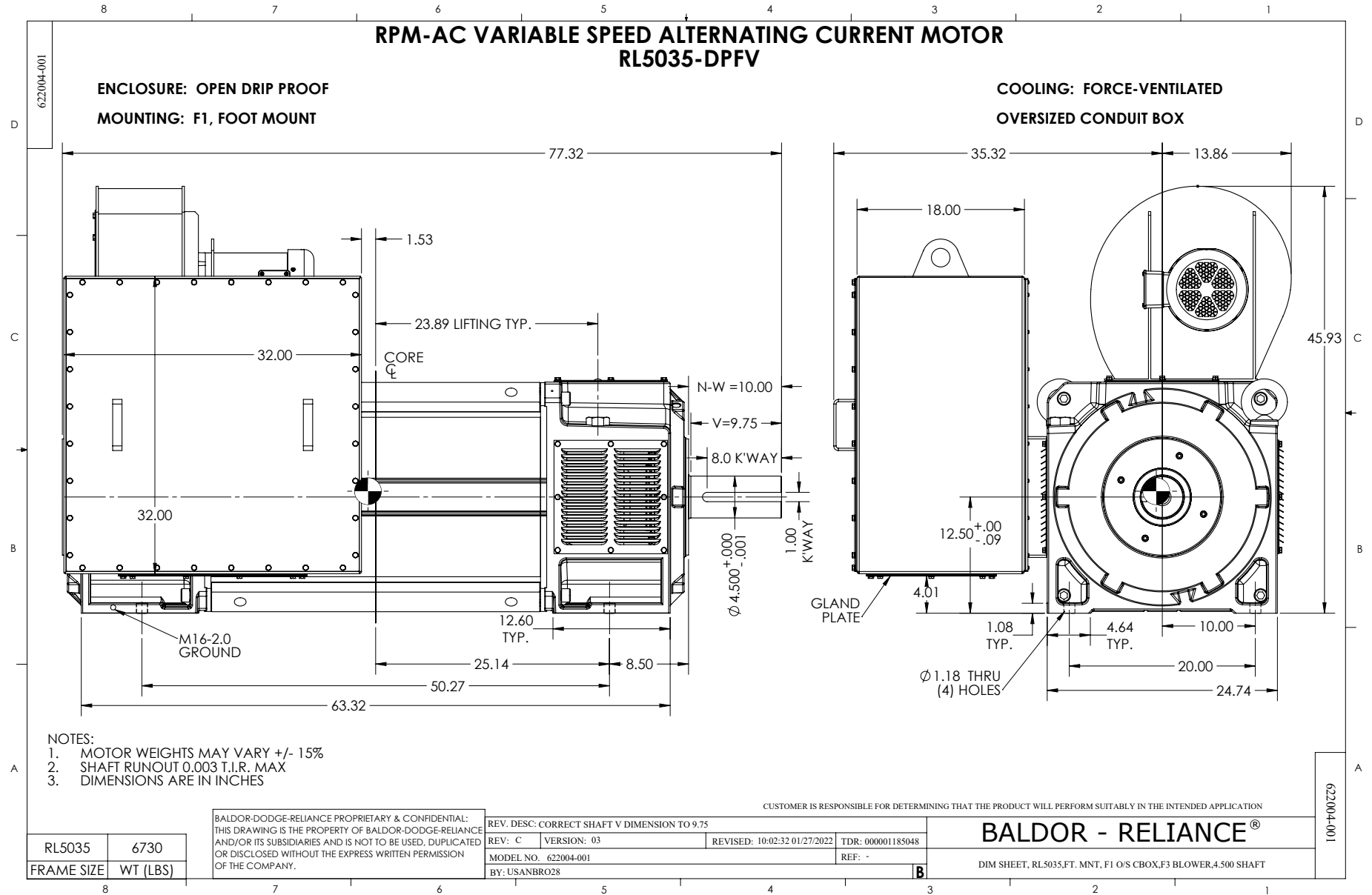
Thermal Device - Winding

Normally Closed Thermostat

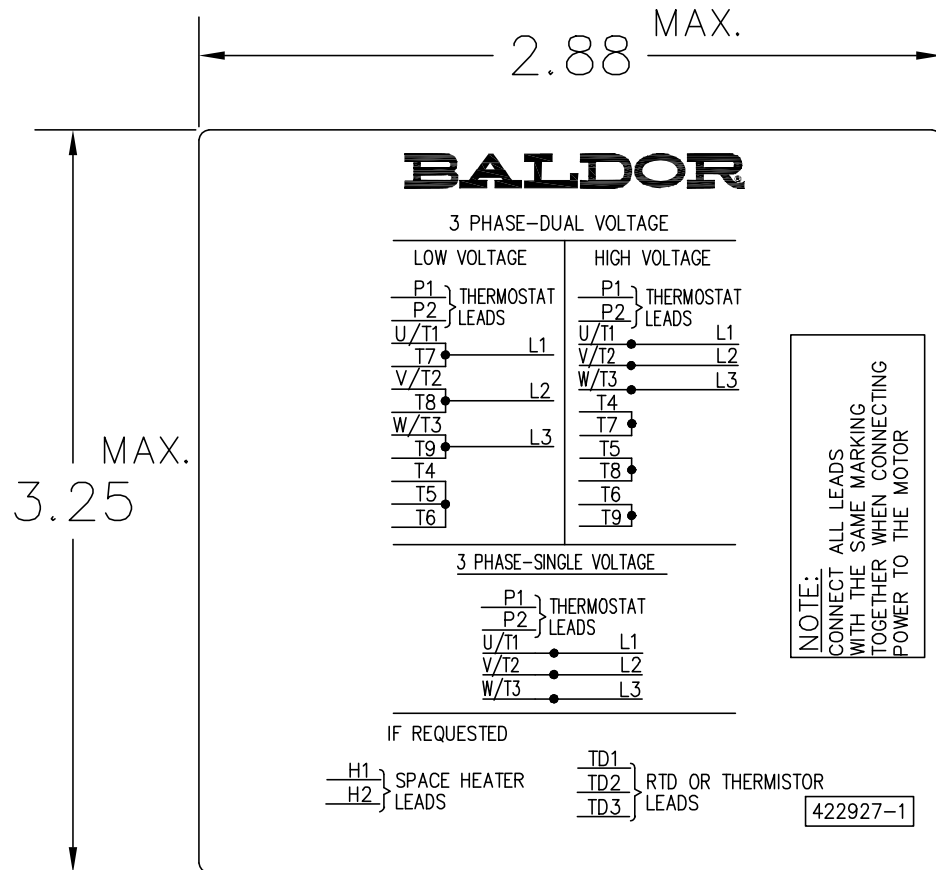
Nameplate

000613006MY

	DUTY	HP	RPM	AMPS	VOLTS	HZ	
	CONT	1750	1787	1512	600	60	
	CONT	1750	2600	1479	600	87.3	
CAT.NO.	IDDRPM5017504		SPEC. NO.	R50-A000-0006			
SER.NO		FR	RL5035Z	INSUL	H		
PH.	3	MAX SAFE SPEED	3000	AMB.	40	MIN. AMB.	-25
DESIGN NO.	L9097A	TYPE		ENCL.	DPG-FV		
S.F.	1.00	D.E. BRG.	120BC02J30X				
ENCL MOD		O.D.E. BRG.	6224/C3J20AA				
	IP23						



422927-001



NOTE:
DATA TO BE SIZED
SO THAT IT FITS INTO
MATERIAL DECAL
DIMENSIONS. MAKE
LETTERS & NUMBERS
AS LARGE AS POSSIBLE.

MATERIAL: CERAMATIC DGF-P4
PERMA GRIP ADHESIVE

ALL LETTERS, NUMBERS
AND LINES TO BE BLACK
ON WHITE BACKGROUND.

NOTE:
CONNECT ALL LEADS
WITH THE SAME MARKING
TOGETHER WHEN CONNECTING
POWER TO THE MOTOR

422927-001

REV. DESC: CHANGE BACKGROUND COLOR FROM GOLD TO WHITE		
REV. LTR: B	VERSION: 02	TDR: 00000788708
FILE: \RGG\00000\203	REVISED: 08:09:29 03/04/2013	
MTL: -	BY: RGGWT	

BALDOR

EXTERNAL CONNECTION LABEL

SH 1 of 1