



Customer information packet

IDVSNM3542-5

.75HP, 1765RPM, 3PH, 60HZ, 56C, 3514M, TENV, F1

Class - None

Division - Not Applicable

Specifications

Enclosure	TENV
Frame	56C
Frame Material	Steel
Frequency	60.00 Hz
Haz Area Class and Group	None
Haz Area Division	Not Applicable
Motor Letter Type	Three Phase
Output @ Frequency	.750 HP @ 60 HZ
Phase	3
Synchronous Speed @ Frequency	1800 RPM @ 60 HZ
Voltage @ Frequency	575.0 V @ 60 HZ
Agency Approvals	CSA UR
Ambient Temperature	40 °C
Auxillary Box	No Auxillary Box
Auxillary Box Lead Termination	None
Base Indicator	Rigid
Bearing Grease Type	Polyrex EM (-20F +300F)
Blower	None
Current @ Voltage	.930 A @ 575.0 V
Design Code	B
Drip Cover	No Drip Cover
Duty Rating	CONT
Efficiency @ 100% Load	82.5 %
Electrically Isolated Bearing	Not Electrically Isolated
Feedback Device	NO FEEDBACK
Front Shaft Indicator	None
Heater Indicator	No Heater
High Voltage Full Load Amps	0.9 a
Insulation Class	F
Inverter Code	Not Inverter
KVA Code	K

Part detail

Revision	B
Type	AC
Mech. spec.	35T995
Base	
Status	PRD/A
Elec. spec.	35WGG123
Layout	35LYT995
Eff. date	01-03-2025
CD Diagram	CD0006
Poles	04
Leads	3#18
Proprietary	False
Created date	03-11-2022

Lifting Lugs	No Lifting Lugs
Locked Bearing Indicator	Locked Bearing
Max Speed	2700 rpm
Motor Lead Quantity/Wire Size	3 @ 18 AWG
Motor Lead Termination	Flying Leads
Motor Standards	NEMA
Motor Type	3514M
Mounting Arrangement	F1
Number of Poles	4
Overall Length	13.84 IN
Power Factor	73
Product Family	General Purpose
Pulley End Bearing Type	Ball
Pulley Face Code	C-Face
Pulley Shaft Indicator	Standard
Rodent Screen	None
Service Factor	1.00
Shaft Diameter	0.625 IN
Shaft Ground Indicator	No Shaft Grounding
Shaft Rotation	Reversible
Shaft Slinger Indicator	No Slinger
Speed	1765 rpm
Speed Code	Single Speed
Starting Method	Direct on line
Thermal Device - Bearing	None
Thermal Device - Winding	Normally Closed Thermostat
Vibration Sensor Indicator	No Vibration Sensor
Winding Thermal 1	None
Winding Thermal 2	None

Nameplate

NP3301L			
CAT NO	IDVSNM3542-5		
SPEC.	35T995G123G1		
FRAME	56C	HP	.75 TE
VOLTS	575		
MAG CUR	0.59	FLA	0.93
RPM	1765	RPM MAX	2700
HZ	60	PH	3 CLASS F
SER.F.	1.00	SL HZ	1.23
NEMA-NOM-EFF	82.5	WK2	0.101
RATING	40C AMB-CONT		
DE BRG	6205	ODE BRG	6203
CC	SN		
	1.5:1 CHP PWM		

AC Induction Motor Performance Data

Record # 87438

Typical performance - not guaranteed values

Winding: 35WGG123-R005		Type: 3514M		Enclosure: TENV	
Nameplate Data			575 V, 60 Hz: Single Voltage Motor		
Rated Output (HP)	.75	Full Load Torque	2.25 LB-FT		
Volts	575	Start Configuration	direct on line		
Full Load Amps	.91	Breakdown Torque	7.36 LB-FT		
R.P.M.	1765	Pull-up Torque	4.05 LB-FT		
Hz	60	Locked-rotor Torque	4.68 LB-FT		
NEMA Design Code	Phase 3	Starting Current	6.16 A		
Service Factor (S.F.)	B KVA Code K	No-load Current	0.589 A		
NEMA Nom. Eff.	82.5	Line-line Res. @ 25°C	50.2 Ω		
Rating - Duty	Power Factor 74	Temp. Rise @ Rated Load	56°C		
	40C AMB-CONT	Locked-rotor Power Factor	65.3		
		Rotor inertia	0.101 lb-ft ²		

Load Characteristics 575 V, 60 Hz, 0.75 HP

% of Rated Load	25	50	75	100	125	150
Power Factor	34	52	65	74	80	83
Efficiency	71.1	80.8	83.1	83.6	82.8	81
Speed	1790	1782	1773	1763	1753	1740
Line amperes	0.61	0.682	0.782	0.913	1.07	1.26

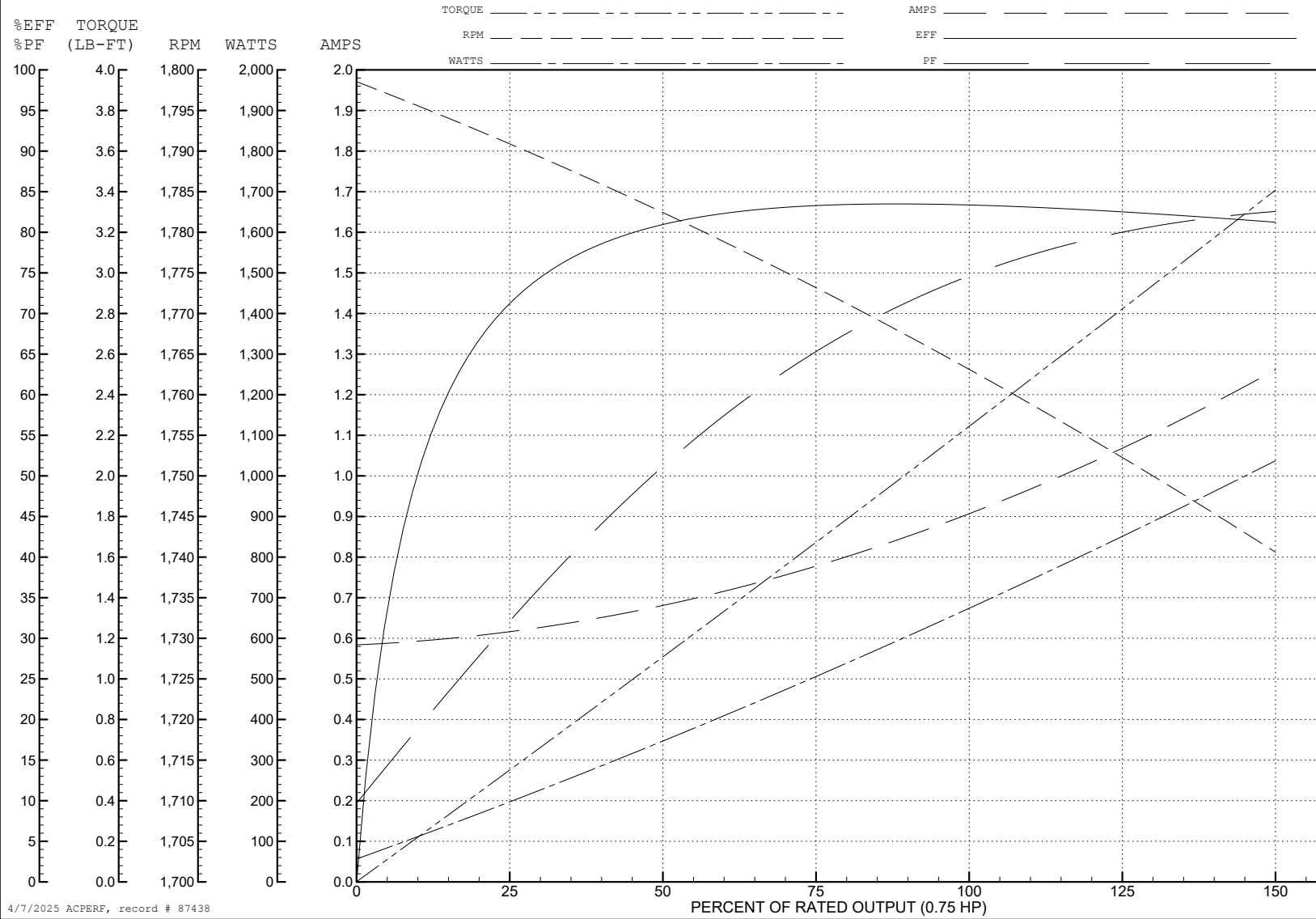
ABB Motors and Mechanical Inc.

WINDING # 35WGG123

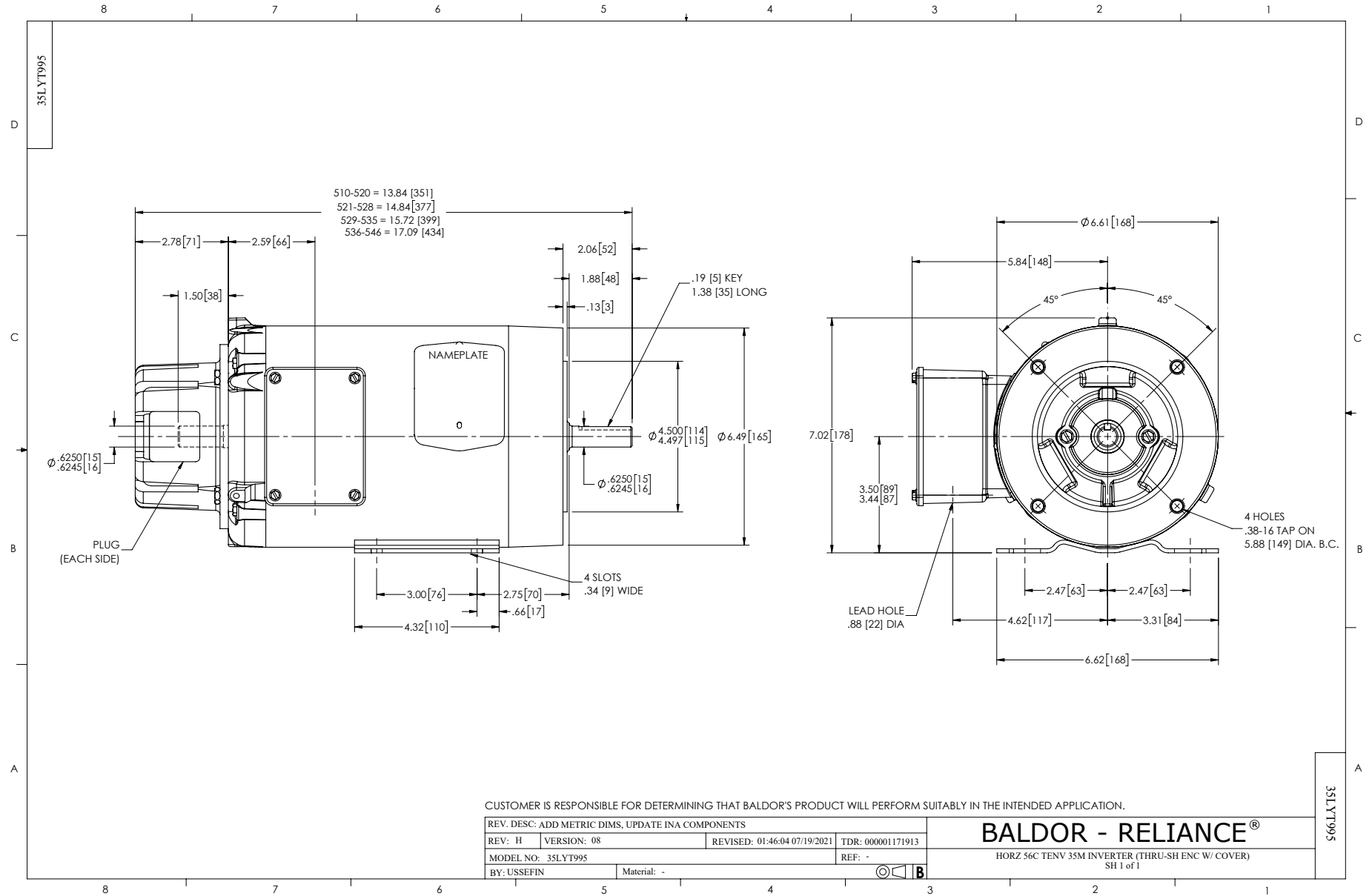
0.75 HP 3 PH 60 HZ 1765 RPM 575 V 3514M

Typical performance - not guaranteed values.

TORQUES (LB-FT): PO=7.36 PU=4.05 LR=4.68 LRA=6.16



4/7/2025 ACPERF, record # 87438



CD0006



NOTES:

1. THREE LEAD MOTOR MAY BE EITHER WYE CONNECTED OR DELTA CONNECTED.
2. INTERCHANGE ANY TWO LINE LEADS TO REVERSE ROTATION.
3. OPTIONAL THERMOSTATS ARE PROVIDED WHEN SPECIFIED.
4. ACTUAL NUMBER OF INTERNAL PARALLEL CIRCUITS MAY VARY.
5. LEAD COLORS ARE OPTIONAL. LEADS MUST BE NUMBERED AS SHOWN.

CD0006

REV. DESC: ADD CLASS CONN00000007		
REV. LTR: E	VERSION: 01	TDR: 000001099922
FILE: \AAA\00005\141	REVISED: 10:24:49 02/19/2019	BY: ENBRIRO
MTL: -	© □	

BALDOR - RELIANCE®

3PH, SV, 3 LEADS, WYE OR DELTA CONNECTED

SH 1 of 1