

BALDOR • RELIANCE

Customer information packet

JMEWDM4103T

25HP, 1770RPM, 3PH, 60HZ, 284JM, TEFC, F1

Class - None

Division - Not Applicable

Specifications

Enclosure	TEFC
Frame	284JM
Frame Material	Iron
Frequency	60.00 Hz
Haz Area Class and Group	None
Haz Area Division	Not Applicable
Motor Letter Type	Three Phase
Output @ Frequency	25.000 HP @ 60 HZ
Phase	3
Synchronous Speed @ Frequency	1800 RPM @ 60 HZ
Voltage @ Frequency	230.0 V @ 60 HZ 460.0 V @ 60 HZ
Agency Approvals	CSA CSA EEV NEMA PREMIUM UR
Ambient Temperature	40 °C
Auxillary Box	No Auxillary Box
Auxillary Box Lead Termination	None
Base Indicator	Rigid
Bearing Grease Type	Polyrex EM (-20F +300F)
Blower	None
Current @ Voltage	60.000 A @ 230.0 V 30.000 A @ 460.0 V
Design Code	B
Drip Cover	No Drip Cover
Duty Rating	CONT
Efficiency @ 100% Load	93.6 %
Electrically Isolated Bearing	Not Electrically Isolated
Feedback Device	NO FEEDBACK
Heater Indicator	No Heater
High Voltage Full Load Amps	30.0 a

Part detail

Revision	C
Type	AC
Mech. spec.	
Base	
Status	PRD/A
Elec. spec.	10WGZ624
Layout	10LY-000-754
Eff. date	02-21-2024
CD Diagram	CD0005
Poles	04
Leads	9#10
Proprietary	False
Created date	01-16-2020

Insulation Class	F
Inverter Code	Inverter Duty
IP Rating	NONE
KVA Code	F
Lifting Lugs	Standard Lifting Lugs
Locked Bearing Indicator	Locked Bearing
Motor Lead Termination	Flying Leads
Motor Standards	NEMA
Motor Type	1056M
Mounting Arrangement	F1
Number of Poles	4
Overall Length	28.44 IN
Power Factor	85
Product Family	Washdown Features
Pulley Face Code	C-Face
Rodent Screen	None
Service Factor	1.15
Shaft Diameter	1.250 IN
Shaft Ground Indicator	No Shaft Grounding
Shaft Rotation	Reversible
Speed	1770 rpm
Speed Code	Single Speed
Starting Method	Direct on line
Thermal Device - Bearing	None
Thermal Device - Winding	None
Vibration Sensor Indicator	No Vibration Sensor
Winding Thermal 1	None
Winding Thermal 2	None

Nameplate

NP1669L									
CAT.NO.	JMEWDM4103T								
SPEC.	10-0000-1310								
HP	25								
VOLTS	230/460								
AMP	60/30								
RPM	1770								
FRAME	284JM		HZ	60		PH	3		
SER.F.	1.15	CODE	F	DES	B	CLASS	F		
NEMA-NOM-EFF	93.6	PF	85						
RATING	40C AMB-CONT								
CC	010A								
DE	6312		ODE	6309					
ENCL	TEFC	SN							
BLANK	20:1 CT&VT, 1.00SF								

AC Induction Motor Performance Data

Record # 62434

Typical performance - not guaranteed values

Winding: 10WGZ624-R002		Type: 1056M		Enclosure: TEFC	
Nameplate Data			460 V, 60 Hz: High Voltage Connection		
Rated Output (HP)	25	Full Load Torque	74.31 LB-FT		
Volts	460	Start Configuration	direct on line		
Full Load Amps	30	Breakdown Torque	197 LB-FT		
R.P.M.	1770	Pull-up Torque	91.4 LB-FT		
Hz	60	Locked-rotor Torque	115 LB-FT		
NEMA Design Code	B	Starting Current	173 A		
Service Factor (S.F.)	1	No-load Current	10.4 A		
NEMA Nom. Eff.	93.6	Line-line Res. @ 25°C	0.29877 Ω		
Rating - Duty	40C AMB-CONT	Temp. Rise @ Rated Load	54°C		
		Locked-rotor Power Factor	30.3		

Load Characteristics 460 V, 60 Hz, 25 HP

% of Rated Load	25	50	75	100	125	150
Power Factor	51	73	81	85	86	86
Efficiency	91	93.8	94.1	93.7	92.9	91.8
Speed	1792.8	1785.5	1778.9	1770.7	1762.4	1751.5
Line amperes	12.5	17	22.9	29.5	36.5	44.7

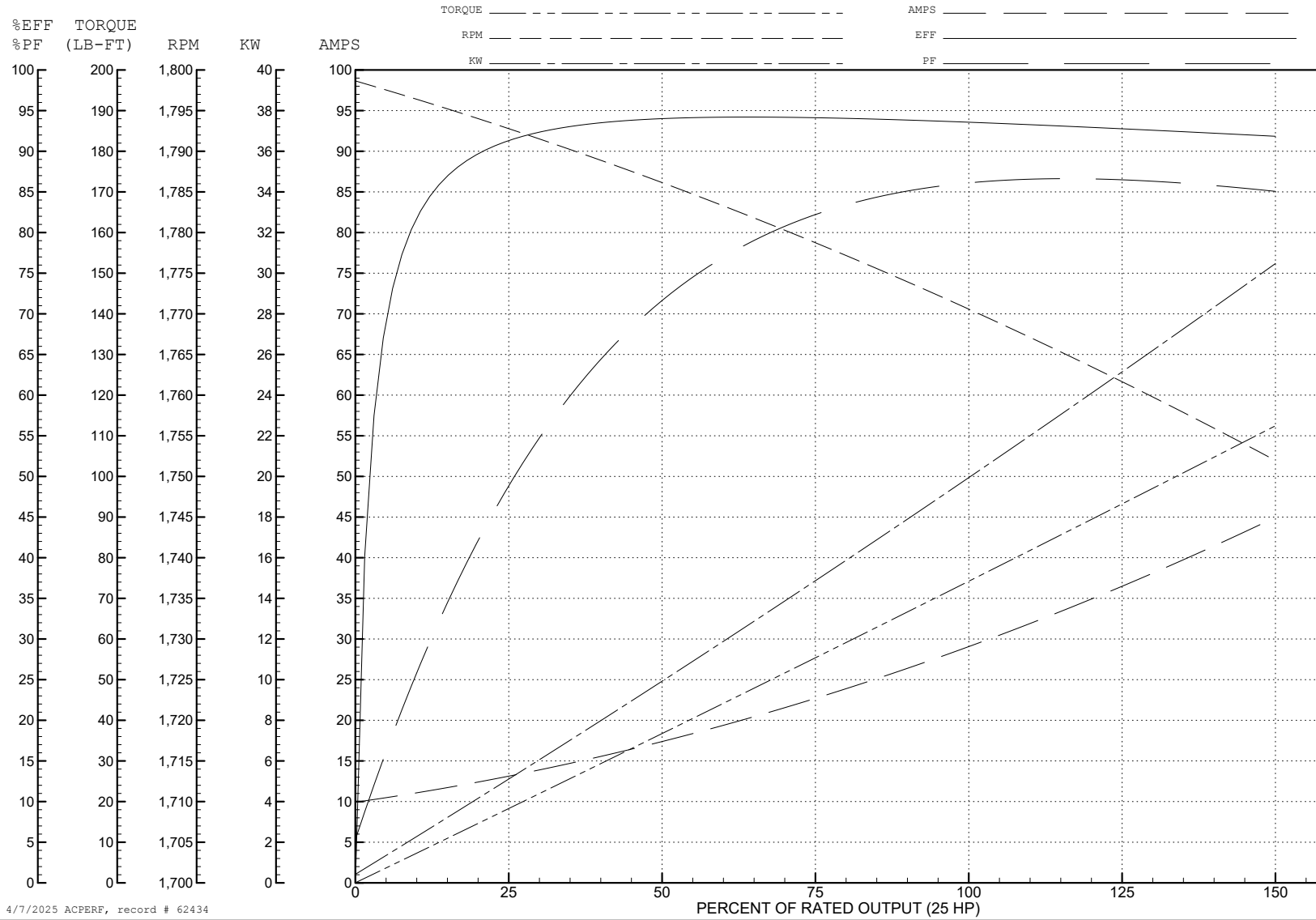
ABB Motors and Mechanical Inc.

WINDING # 10WGZ624

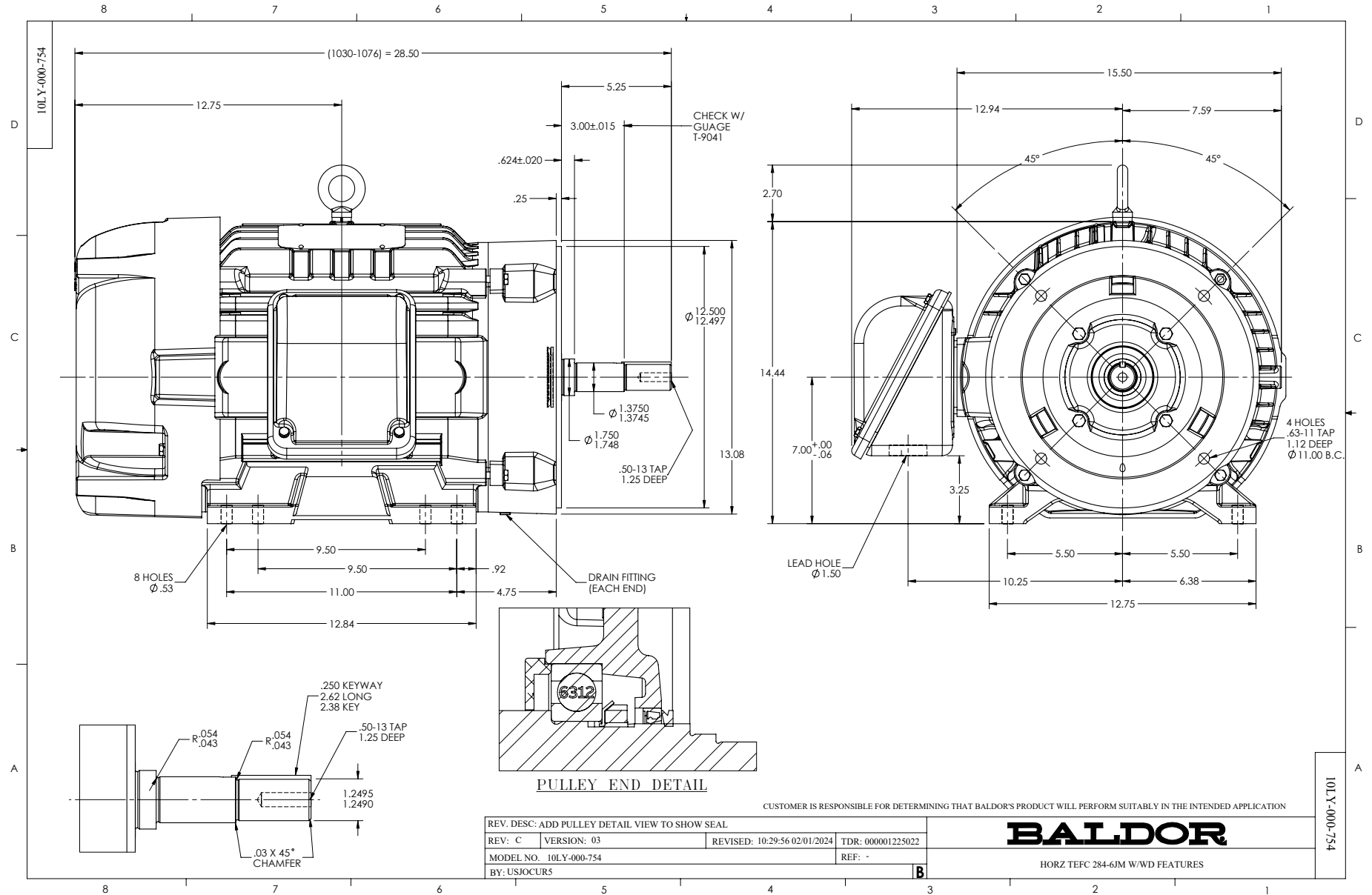
Typical performance - not guaranteed values.

25 HP 3 PH 60 HZ 1770 RPM 460 V 1056M

TORQUES (LB-FT): PO=197 PU=91.4 LR=115 LRA=173



4/7/2025 ACPERF, record # 62434



CD0005



LOW VOLTAGE (2Y)



LINE

HIGH VOLTAGE (1Y)



LINE

NOTES:

1. INTERCHANGE ANY TWO LINE LEADS TO REVERSE ROTATION.
2. OPTIONAL THERMOSTATS ARE PROVIDED WHEN SPECIFIED.
3. ACTUAL NUMBER OF INTERNAL PARALLEL CIRCUITS MAY BE A MULTIPLE OF THOSE SHOWN ABOVE.
4. LEAD COLORS ARE OPTIONAL. LEADS MUST ALWAYS BE NUMBERED AS SHOWN.

CD0005

REV. DESC: REVISE TO SHOW OPTIONAL COLORS			
REV. LTR: E	BY: JLP	REVISED: 01/19/99 10:15	TDR: 0171435
S00000		FILE: AAA00005140	MDL: -
		MTL: -	

BALDOR ELECTRIC Co.

3PH, DV, 9 LEADS