



---

# Customer information packet

## VFSWDM3651T-E-G

3HP, 1760RPM, 3PH, 60HZ, 145TC, 3636M, TEFC, F1

Class - None

Division - Not Applicable

## Specifications

Enclosure	TEFC
Frame	145TC
Frame Material	Stainless Steel
Frequency	60.00 Hz
Haz Area Class and Group	None
Haz Area Division	Not Applicable
Motor Letter Type	Three Phase
Output @ Frequency	3.000 HP @ 60 HZ
Phase	3
Synchronous Speed @ Frequency	1800 RPM @ 60 HZ
Voltage @ Frequency	230.0 V @ 60 HZ 460.0 V @ 60 HZ
Agency Approvals	CSA EEV NEMA PREMIUM NEMA_PREMIUM UR
Ambient Temperature	40 °C
Auxillary Box	No Auxillary Box
Auxillary Box Lead Termination	None
Base Indicator	No Mounting
Bearing Grease Type	Polyrex EM (-20F +300F)
Blower	None
Current @ Voltage	4.200 A @ 460.0 V 8.400 A @ 230.0 V
Design Code	A
Drip Cover	No Drip Cover
Duty Rating	CONT
Efficiency @ 100% Load	89.5 %
Electrically Isolated Bearing	Not Electrically Isolated
Feedback Device	NO FEEDBACK
Heater Indicator	No Heater
High Voltage Full Load Amps	4.2 a

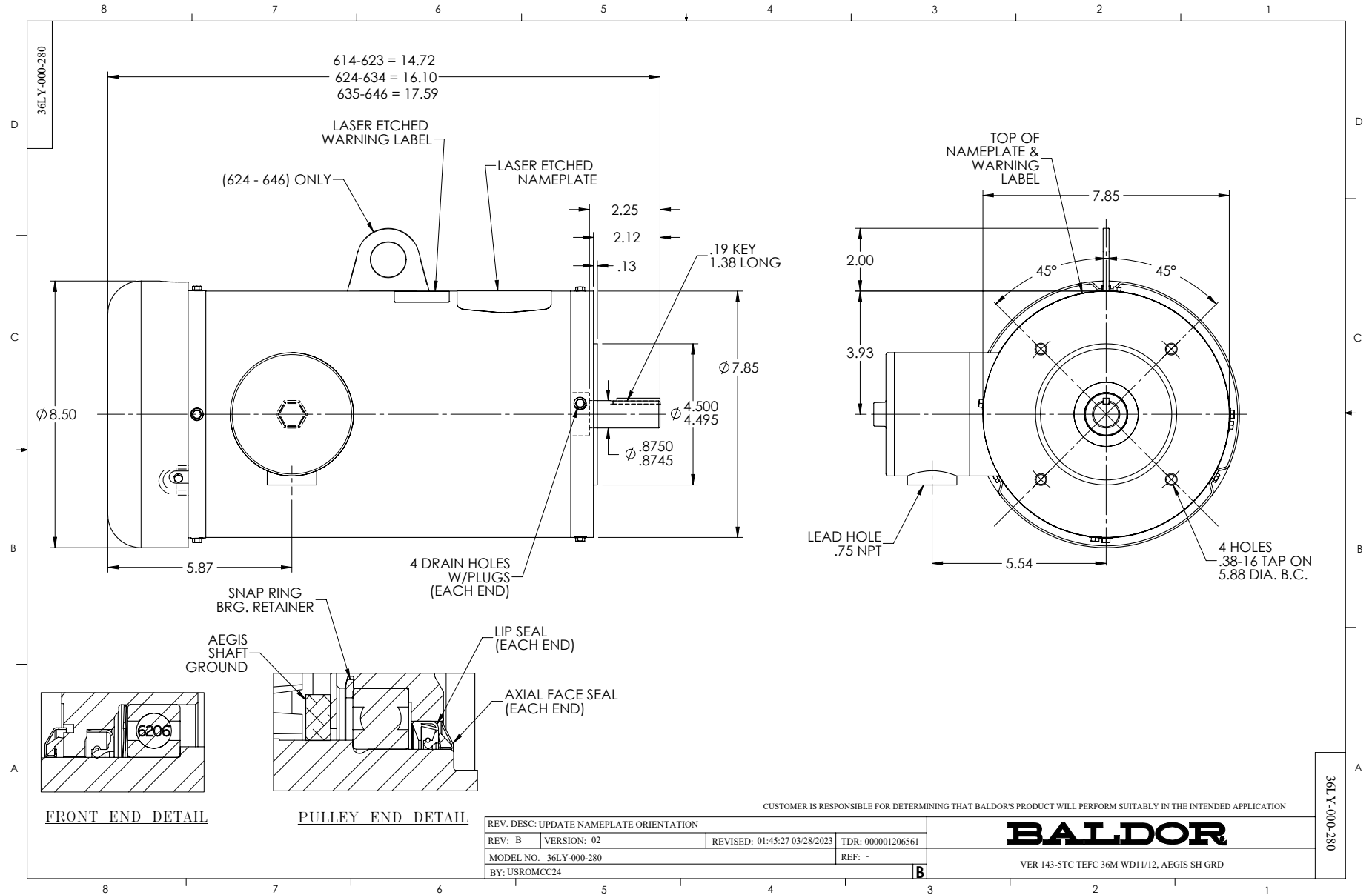
## Part detail

Revision	B
Type	AC
Mech. spec.	
Base	
Status	PRD/A
Elec. spec.	36WGA0053
Layout	36LY-000-280
Eff. date	05-22-2023
CD Diagram	CD0005
Poles	04
Leads	9#16
Proprietary	False
Created date	10-14-2021

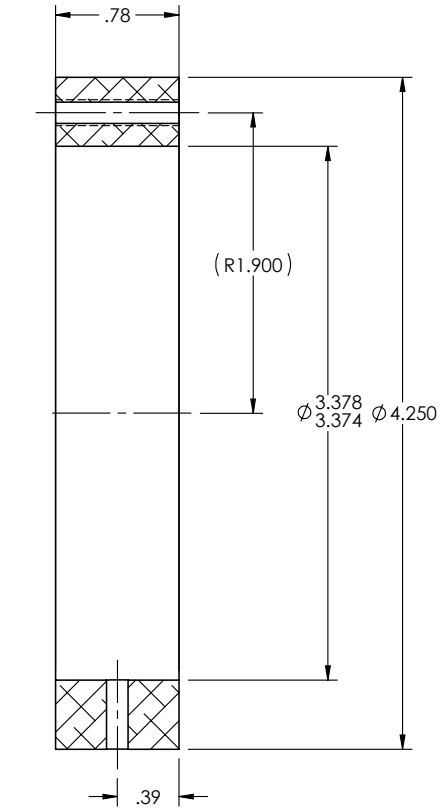
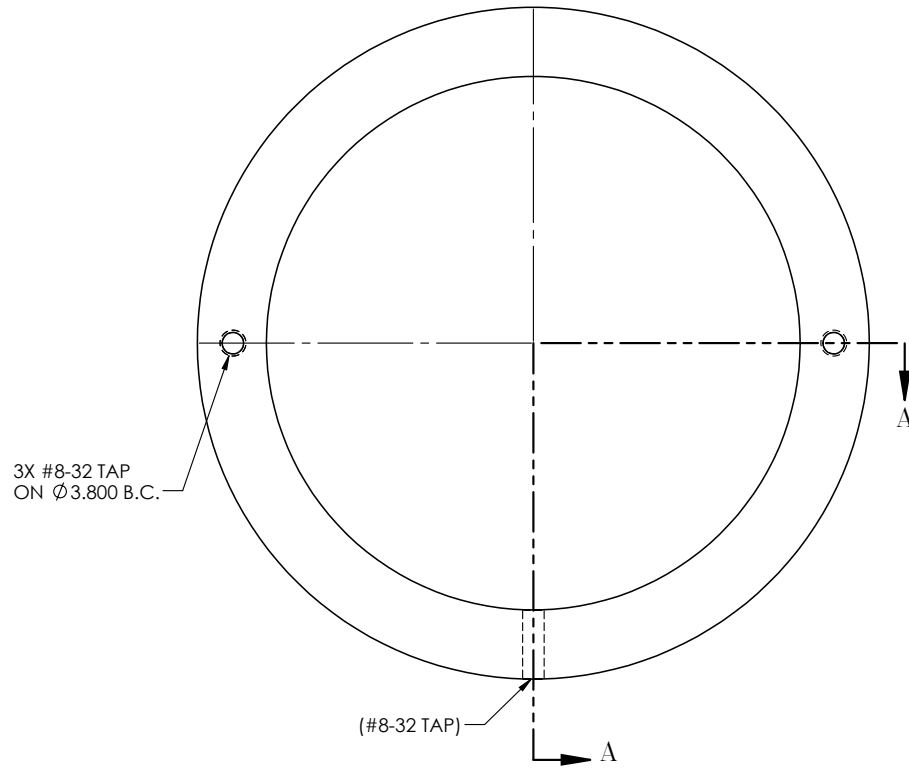
<b>Insulation Class</b>	H
<b>Inverter Code</b>	Not Inverter
<b>KVA Code</b>	K
<b>Lifting Lugs</b>	Standard Lifting Lugs
<b>Locked Bearing Indicator</b>	Locked Bearing
<b>Motor Lead Termination</b>	Flying Leads
<b>Motor Standards</b>	NEMA
<b>Motor Type</b>	3636M
<b>Mounting Arrangement</b>	F1
<b>Number of Poles</b>	4
<b>Overall Length</b>	17.59 IN
<b>Power Factor</b>	76
<b>Product Family</b>	WD All SS Encapsulated
<b>Pulley Face Code</b>	C-Face
<b>Rodent Screen</b>	None
<b>Service Factor</b>	1.15
<b>Shaft Diameter</b>	0.875 IN
<b>Shaft Ground Indicator</b>	Shaft Grounding
<b>Shaft Rotation</b>	Reversible
<b>Speed</b>	1760 rpm
<b>Speed Code</b>	Single Speed
<b>Starting Method</b>	Direct on line
<b>Thermal Device - Bearing</b>	None
<b>Thermal Device - Winding</b>	None
<b>Vibration Sensor Indicator</b>	No Vibration Sensor
<b>Winding Thermal 1</b>	None
<b>Winding Thermal 2</b>	None

**Nameplate**

<b>NP4292M01</b>										
<b>CAT.NO.</b>	VFSWDM3651T-E-G									
<b>SPEC.</b>	36-0000-3588									
<b>HP</b>	3									
<b>VOLTS</b>	230/460									
<b>AMPS</b>	8.4/4.2									
<b>R.P.M.</b>	1760									
<b>FRAME</b>	145TC	<b>HZ</b>	60	<b>PH</b>	3					
<b>SER.F.</b>	1.15	<b>CODE</b>	K	<b>DES.</b>	A	<b>CLASS</b>	H			
<b>NEMA NOM. EFF.</b>	89.5	<b>P.F.</b>	76							
<b>RATING</b>	40C AMB-CONT									
<b>CC</b>	010A	<b>USABLE AT 208V</b>	N/A							
<b>DE</b>	6207	<b>ODE</b>	6206							
<b>ENCL</b>	TEFC	<b>SN</b>								
4:1 CT, 10:1VT IP69										



HA5030A03



SECTION A-A

<b>MACH. TOLERANCE UNLESS SPEC.</b>
2 PLC DECIMALS = $\pm .020$
3 PLC DECIMALS = $\pm .005$
ANGLE TOL. = $\pm 0.5^\circ$
UNSPECIFIED RADII = R.015

**NOTE:** PART TO BE MADE FROM 300 SERIES STAINLESS

REV. DESC: NEW				
REV: -	VERSION: 00	BY: USJOBUR22	REVISED: 01:03:58 11/15/2018	TDR: 000001086984
HA5030A03		MODEL NO. HA5030A03	REF: -	
		Material: -		

**BALDOR - RELIANCE®**

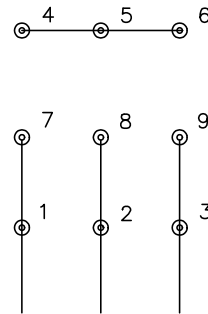
RETAINER ADAPTER FOR 36EP1926A03

HA5030A03

CD0005

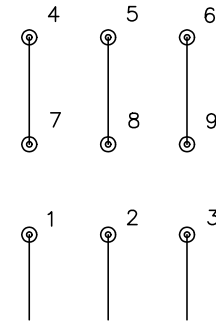


LOW VOLTAGE  
(2Y)



LINE

HIGH VOLTAGE  
(1Y)



LINE

**NOTES:**

1. INTERCHANGE ANY TWO LINE LEADS TO REVERSE ROTATION.
2. OPTIONAL THERMOSTATS ARE PROVIDED WHEN SPECIFIED.
3. ACTUAL NUMBER OF INTERNAL PARALLEL CIRCUITS MAY BE A MULTIPLE OF THOSE SHOWN ABOVE.
4. LEAD COLORS ARE OPTIONAL. LEADS MUST ALWAYS BE NUMBERED AS SHOWN.

CD0005

REV. DESC: REVISE TO SHOW OPTIONAL COLORS			
REV. LTR: E	BY: JLP	REVISED: 01/19/99 10:15	TDR: 0171435
S00000		FILE: AAA00005140	MDL: -
		MTL: -	

**BALDOR ELECTRIC Co.**

3PH, DV, 9 LEADS