



Customer information packet

VXL050722A

0.75HP, 3500RPM, 1PH, 60HZ, 56C, 3524L, XPFC, F
Class - CLI GP D; CLII GP F,G
Division - Division I

Specifications

Enclosure	XPFC
Frame	56C
Frame Material	Steel
Frequency	60.00 Hz
Haz Area Class and Group	CLI GP D; CLII GP F,G
Haz Area Division	Division I
Motor Letter Type	Cap Start, Induction Run
Output @ Frequency	.750 HP @ 60 HZ
Phase	1
Synchronous Speed @ Frequency	3600 RPM @ 60 HZ
Voltage @ Frequency	115.0 V @ 60 HZ 230.0 V @ 60 HZ
Agency Approvals	CSA UL
Ambient Temperature	40 °C
Auxillary Box	No Auxillary Box
Auxillary Box Lead Termination	None
Base Indicator	No Mounting
Bearing Grease Type	Polyrex EM (-20F +300F)
Blower	None
Current @ Voltage	4.600 A @ 230.0 V 9.300 A @ 115.0 V
Design Code	-
Drip Cover	No Drip Cover
Duty Rating	CONT
Efficiency @ 100% Load	66.0 %
Electrically Isolated Bearing	Not Electrically Isolated
Feedback Device	NO FEEDBACK
Haz Area Temp Code	T4
Heater Indicator	No Heater
High Voltage Full Load Amps	4.6 a
Insulation Class	B

Part detail

Revision	D
Type	AC
Mech. spec.	
Base	
Status	PRD/A
Elec. spec.	35WG0498
Layout	35LYE371
Eff. date	05-01-2024
CD Diagram	CD0008
Poles	02
Leads	6#18,1#14 #4TH
Proprietary	False
Created date	03-31-2021

Inverter Code	Not Inverter
IP Rating	NONE
KVA Code	N
Lifting Lugs	No Lifting Lugs
Locked Bearing Indicator	Locked Bearing
Motor Lead Termination	Flying Leads
Motor Standards	NEMA
Motor Type	3524L
Mounting Arrangement	F1
Number of Poles	2
Overall Length	15.15 IN
Power Factor	77
Product Family	General Purpose
Pulley Face Code	C-Face
Rodent Screen	None
Service Factor	1.00
Shaft Diameter	0.625 IN
Shaft Ground Indicator	No Shaft Grounding
Shaft Rotation	Reversible
Speed	3500 rpm
Speed Code	Single Speed
Starting Method	Direct on line
Thermal Device - Bearing	None
Thermal Device - Winding	Normally Closed Thermostat
Vibration Sensor Indicator	No Vibration Sensor
Winding Thermal 1	Automatic Thermal Overload
Winding Thermal 1 Location	EP
Winding Thermal 2	None

Nameplate

NP0016XPSL				
NO.		CC		
SER. #				
SPEC	35-0000-1085			
CAT.NO.	VXL050722A			
H.P.	.75	T. CODE	T4	
VOLTS	115/230			
AMPS	9.3/4.6			
R.P.M.	3500 35WG0498			
HZ	60	PH	1	CLASS B
SER.F.	1.00	DES	-	CODE N
RATING	40C AMB-CONT			
FRAME	56C	NEMA NOM. EFF	66	
	PF	77		
BLANK	NEMA MG-1 PART 5, IP54			

AC Induction Motor Performance Data

Record # 88186

Typical performance - not guaranteed values

Winding: 35WG0498		Type: 3524L		Enclosure: XPFC	
Nameplate Data			115 V, 60 Hz: Low Voltage Connection		
Rated Output (HP)	0.75	Full Load Torque	1.12 LB-FT		
Volts	115/230	Start Configuration	Unknown		
Full Load Amps	9.3/4.6	Breakdown Torque	3.63 LB-FT		
R.P.M.	3500	Pull-up Torque	3.18 LB-FT		
Hz	60 Phase	1	Locked-rotor Torque	5 LB-FT	
NEMA Design Code	- KVA Code	N	Starting Current	64.2 A	
Service Factor (S.F.)		1	No-load Current	5.62 A	
NEMA Nom. Eff.	66 Power Factor	77	Line-line Res. @ 25°C	0.62 Ω A Ph 1.76 Ω B Ph	
Rating - Duty	40C AMB-CONT		Temp. Rise @ Rated Load	39°C	
			Locked-rotor Power Factor	93.9	
			Rotor inertia	0.0664 lb-ft ²	

Load Characteristics 115 V, 60 Hz, 0.75 HP

% of Rated Load	25	50	75	100	125	150
Power Factor	49	63	72	79	83	85
Efficiency	40.9	56.5	64.3	68.3	70.4	71.1
Speed	3570	3552	3533	3513	3491	3466
Line amperes	6.11	6.87	7.88	9.08	10.5	12

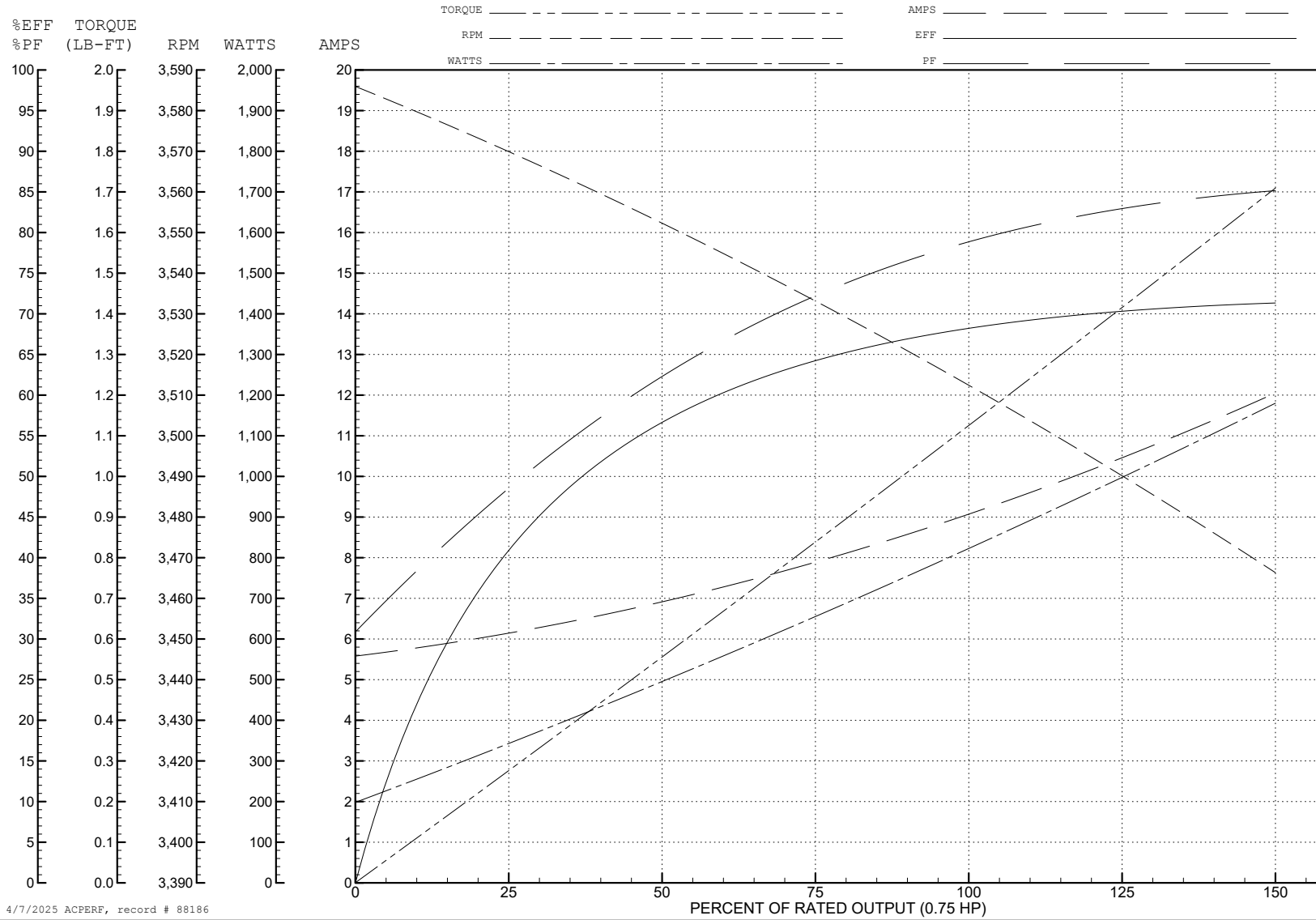
ABB Motors and Mechanical Inc.

WINDING # 35WG0498

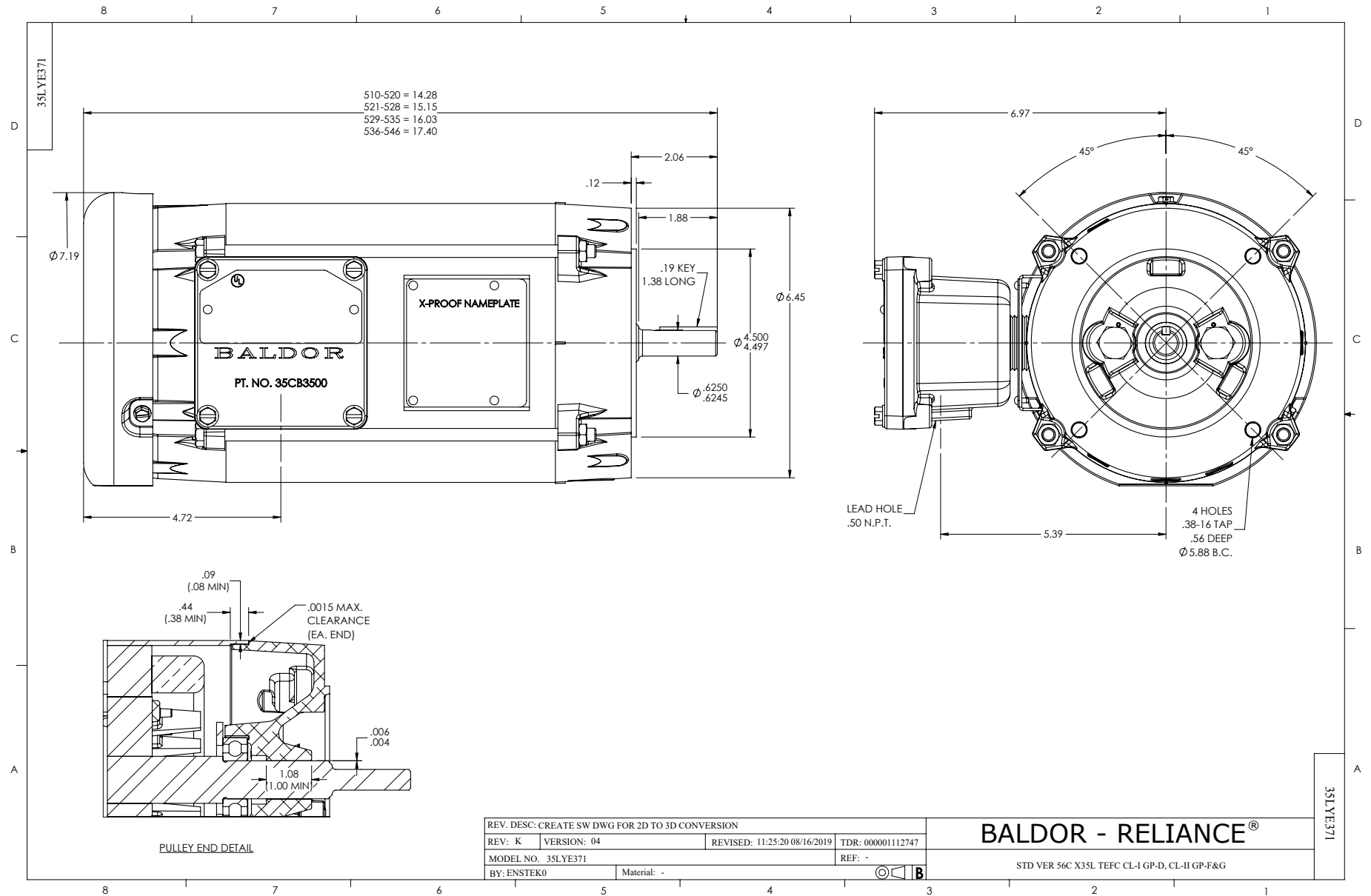
Typical performance - not guaranteed values.

0.75 HP 1 PH 60 HZ 3500 RPM 115 V 3524L

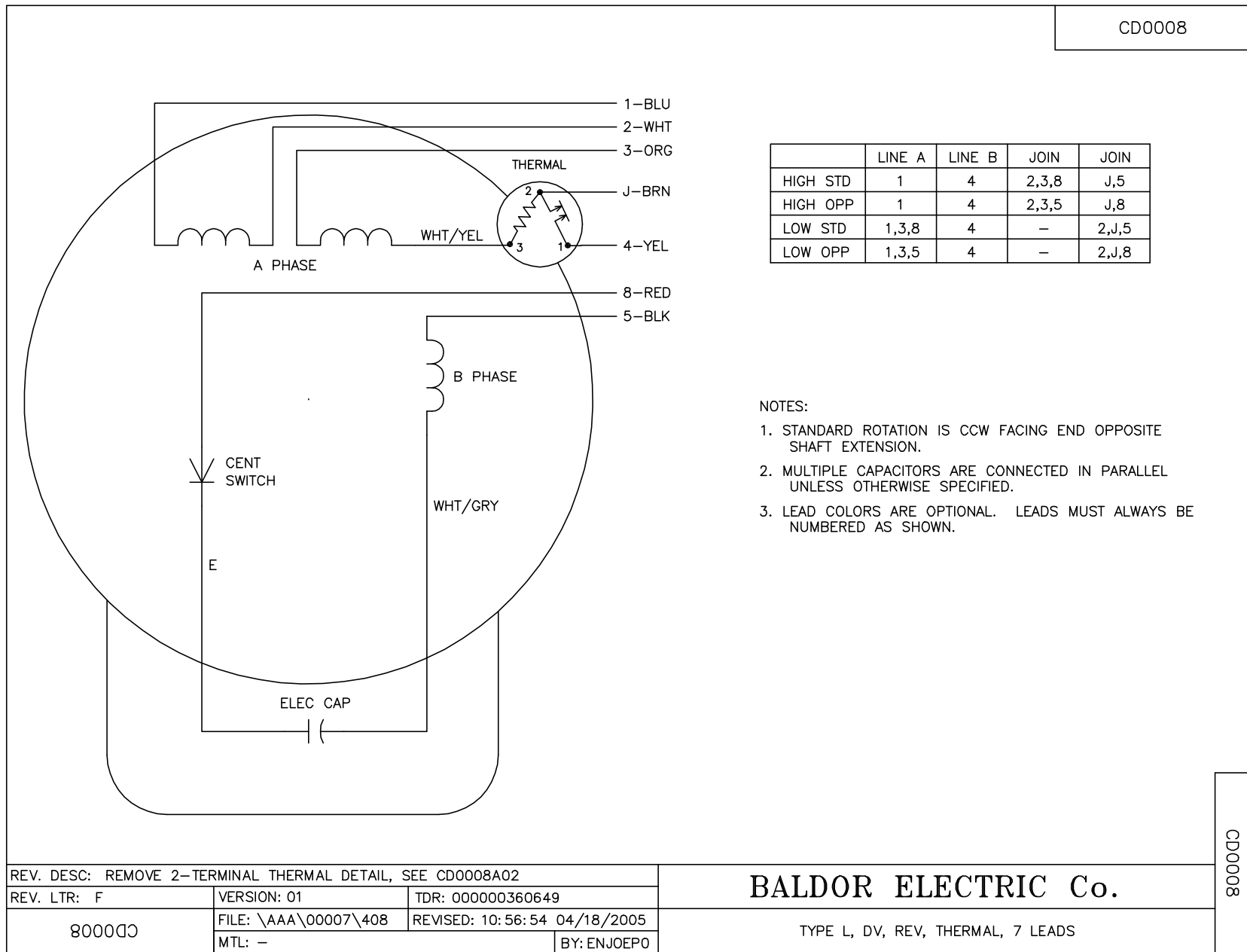
TORQUES (LB-FT): PO=3.63 PU=3.18 LR=5 LRA=64.2



4/7/2025 ACPERF, record # 88186



CD0008



	LINE A	LINE B	JOIN	JOIN
HIGH STD	1	4	2,3,8	J,5
HIGH OPP	1	4	2,3,5	J,8
LOW STD	1,3,8	4	-	2,J,5
LOW OPP	1,3,5	4	-	2,J,8

NOTES:

1. STANDARD ROTATION IS CCW FACING END OPPOSITE SHAFT EXTENSION.
2. MULTIPLE CAPACITORS ARE CONNECTED IN PARALLEL UNLESS OTHERWISE SPECIFIED.
3. LEAD COLORS ARE OPTIONAL. LEADS MUST ALWAYS BE NUMBERED AS SHOWN.

REV. DESC: REMOVE 2-TERMINAL THERMAL DETAIL, SEE CD0008A02		
REV. LTR: F	VERSION: 01	TDR: 000000360649
800000	FILE: \AAA\00007\408	REVISED: 10:56:54 04/18/2005
	MTL: -	BY: ENJOEPO

BALDOR ELECTRIC Co.

TYPE L, DV, REV, THERMAL, 7 LEADS

CD0008