



**The Timken Company**

4500 Mt Pleasant St. NW

N. Canton, OH 44720

**Phone:** (234) 262-3000

**E-Mail:** [CustomerCAD@timken.com](mailto:CustomerCAD@timken.com) • **Web site:** [www.timken.com](http://www.timken.com)

## Part Number RTU1 1/4, Fafnir® Take-Up Mounted Bearings Eccentric Locking Collar




[Specifications](#) | [Dimensions](#) | [Basic Load Ratings](#)

### Specifications

<b>Series</b>	Industrial
<b>Shaft Size d</b>	1 1/4 in
<b>Bearing Number</b>	G1104KRRB
<b>Seal Type</b>	Shroud Seal
<b>Housing Construction</b>	Take-Up
<b>Alternate Part Name</b>	RTU1 1/4

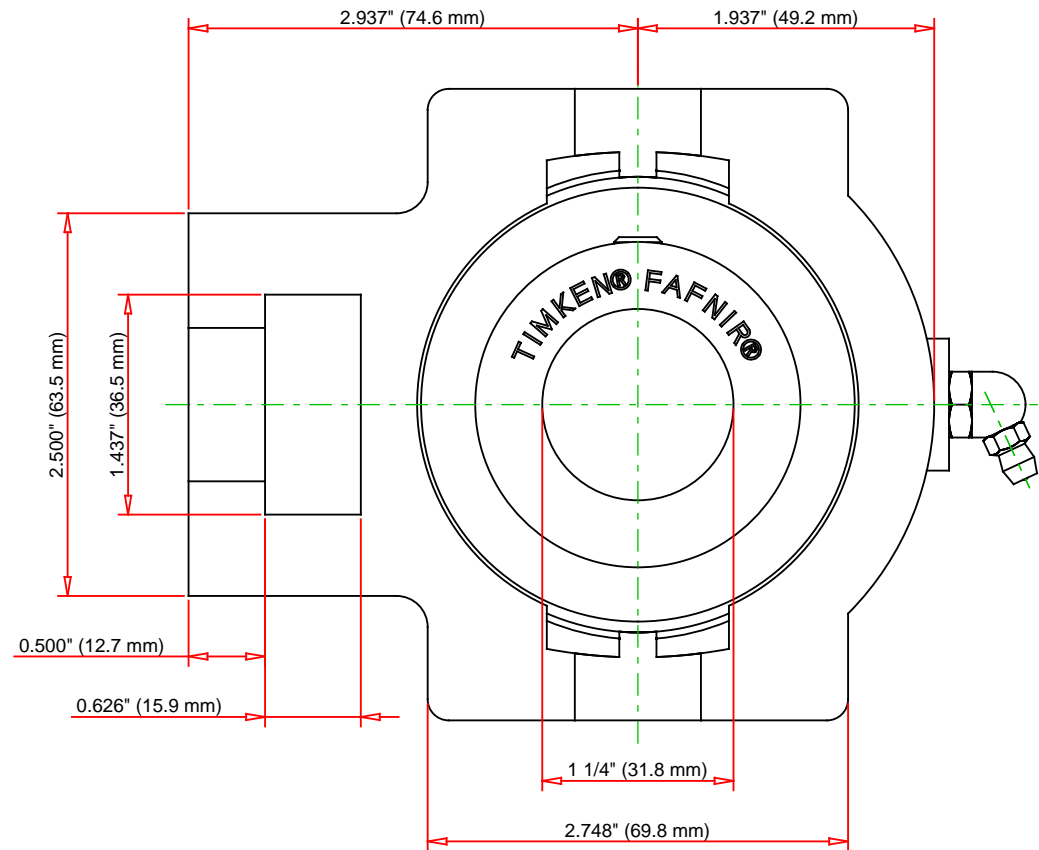
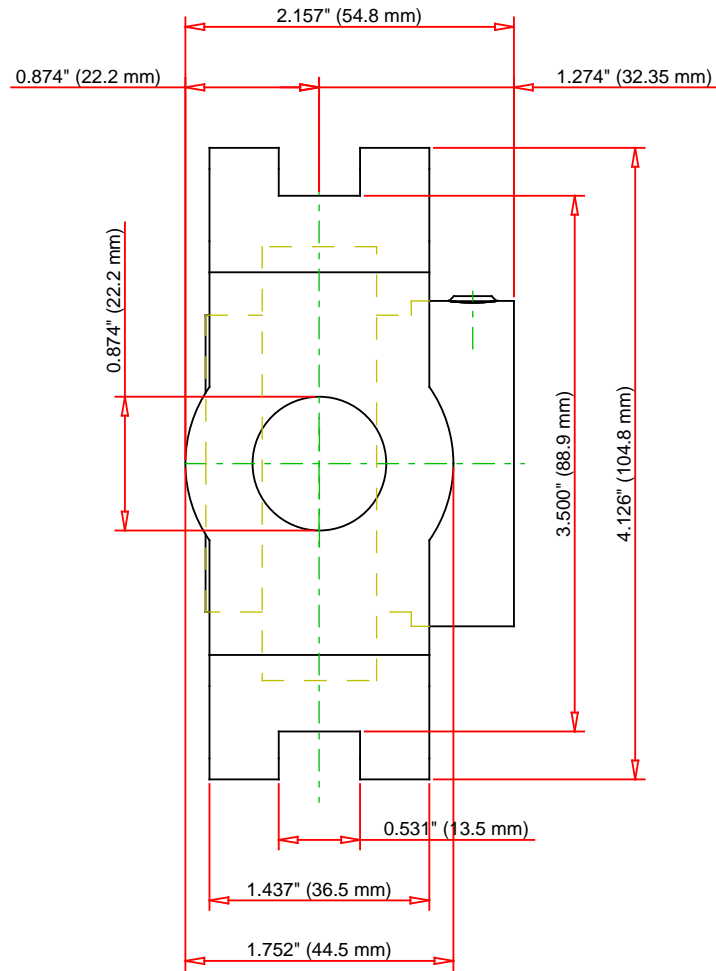
### Dimensions

<b>Housing Width A</b>	44.5 mm 1.752 in
 <b>Slot Width A1</b>	13.5 mm 0.531 in

<b>Socket Width A2</b>	36.5 mm 1.437 in
<b>Total Height H</b>	104.8 mm 4.126 in
<b>Pitch Height H1</b>	88.90 mm
<b>Height H2</b>	63.5 mm
<b>Total Length L</b>	123.8 mm 4.874 in
<b>Shaft Length L1</b>	74.6 mm 2.937 in
<b>Dimension L2</b>	12.7 mm
<b>Slot Length L3</b>	69.8 mm 2.748 in
<b>Adjustment Screw Bore N</b>	22.2 mm 0.874 in
<b>Opening Width N1</b>	15.9 mm 0.626 in
<b>Opening Height N2</b>	36.5 mm 1.437 in
<b>Dimension S1</b>	32.35 mm 1.274 in
<b>Dimension G</b>	54.8 mm 2.157 in
<b>Dimension P</b>	49.2 mm 1.937 in
<b>Dimension T</b>	22.2 mm 0.874 in

<b>Static Load Rating</b>	15300 N 3440 lbf
---------------------------	---------------------

<b>Dynamic Load Rating</b>	28500 N 6400 lbf
----------------------------	---------------------



Bearing Number	G1104KRRB			
Load Ratings - C <sub>r</sub>	6400	lbf	28500	N
Load Ratings - C <sub>0r</sub>	3440	lbf	15300	N
Weight	4.46	lb	2.02	kg

**TIMKEN**

THE TIMKEN COMPANY  
NORTH CANTON, OHIO USA

**RTU1 1/4**

Fafnir® Take-Up Mounted Bearings Eccentric  
Locking Collar

Every reasonable effort has been made to ensure the accuracy of the information contained in this writing, but no liability is accepted for errors, omissions or for any other reason.

**FOR DISCUSSION ONLY**