

SP

Single Pole High Amperage



Main Advantages

- Safety features provide maximum protection
- Silver, butt-style contact technology maximizes durability
IP66/IP67 environmental protection when mated
- Mechanical coding prevents intermating of phases

- Features and Ratings p. 140
- SP p. 141
- Dimensions p. 142

SCAN
ME >>



PRODUCT FEATURES

Operating Instructions



To connect, insert the plug into the receptacle until a click is heard. Rotation of the plug in either direction engages a locking finger, which prevents further rotation.



To close the pilot circuit and mechanically lock the plug into the receptacle, turn the ring on the receptacle until the "1" lines up with the arrow. This turns the power on.



To disconnect, open the pilot circuit and unlock the plug by turning the ring until the "0" is aligned with the arrow. The power is now off.



Press firmly on the latch release button and simultaneously pull on the inlet. A slight rotation of the plug may also be required.

HIGH IMPACT

Pilot Connections

Integral pilot circuit for controlling the power circuit.

Latch Release Button

Enables disconnection of the plug from the receptacle.

Silver Contact Material

Enables maximum performance and durability – withstands at least 2000 operations.

Color Coding

Enables quick visual identification of matching plugs/receptacles.

Mechanical Interlock

Twist ring closes/opens the pilot circuit and locks/unlocks the latching mechanism to prevent connection or disconnection under load.

Phase Label

Indicates phase of receptacle.

Protective Caps

Protects contacts when disconnected.

General Ratings

Listing	CSA	IEC	NOM
Amperage	600 A	800 A	600 A
Voltage	600 VAC Max	1000 VAC/1500 VDC Max	600 VAC Max
Frequency	50-400 Hz	50-400 Hz	50-400 Hz
Horsepower	500 hp	-	500 hp
Environmental	IP66/IP67	IP66/IP67	IP66/IP67
Temperature	Min -15°F/Max 140°F	Min -15°F/Max 140°F	Min -15°F/Max 140°F

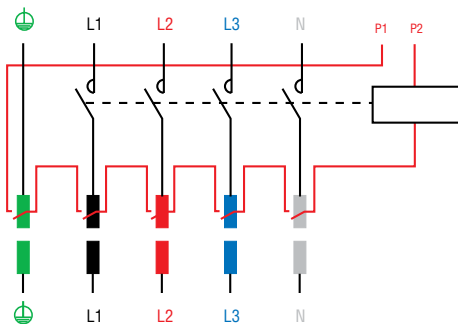
Highlighted Feature

Pilot Circuit



SP plugs and connectors are designed with safety and durability in mind. Each device is mechanically interlocked with an integral pilot circuit switch for controlling the power circuit in order to prevent connection and disconnection under load.

A typical pilot circuit wiring diagram ≤ 250 VAC circuit shown



SP Single Pole - 600 A

CSA Ratings

- Max Amperage & Voltage**
 600 A, 600 VAC
 To order devices for international applications and for IEC listings up to 800 A, 1000 VAC/1500 VDC, refer to international CE devices catalog.
- Current Interruption Capability**
 Not for Current Interrupting
- Horsepower Ratings**

480 V	3Ø	500 hp
600 V	3Ø	500 hp

 CSA hp rated when auxiliary pilots are wired to control motor control circuit.
- Environmental Ratings**
 IP66/IP67
- Temperature Range**
 Min -15°F/Max 140°F
- Wiring Capacity**
 Min 2/0 Max 777 MCM
- Applicable Standards**
 CSA C22.2 NO. 182.1*, NOM
 (*Listing applies to AC devices only)
- Pilot Wiring**
 1A, 240 VAC, 14 AWG (Prewired)

! Don't forget to add installation accessories to your order



Receptacle
(replacement)
(female)
without lug



Receptacle
(female) on
angle adapter
(sold as a set)



Connector*
(female) on handle
(sold as a set)

North American Configurations

VOLTAGE	POLARITY	REC PART # WITHOUT LUG	REC PART # ON ANGLE ADAPTER	CONNECTOR PART # ON HANDLE
≤ 250 V	L1	44-44001-P80	44-47001-P80	44-43001-P80
≤ 250 V	L2	44-44002-P80	44-47002-P80	44-43002-P80
≤ 250 V	L3	44-44003-P80	44-47003-P80	44-43003-P80
≤ 250 V	NEUTRAL	44-4400N-P80	44-4700N-P80	44-4300N-P80
	GROUND	44-4400T-P80	44-4700T-P80	44-4300T-P80
	POSITIVE	44-4400P	44-4700P	44-4300P
	NEGATIVE	44-4400M	44-4700M	44-4300M
> 250 V	L1	44-44001-P88	44-47001-P88	44-43001-P88
> 250 V	L2	44-44002-P88	44-47002-P88	44-43002-P88
> 250 V	L3	44-44003-P88	44-47003-P88	44-43003-P88
> 250 V	NEUTRAL	44-4400N-P88	44-4700N-P88	44-4300N-P88



Inlet
(replacement)
(male) without lug



Inlet
(male) on angle adapter
(sold as a set)



Plug*
(male) on handle
(sold as a set)

North American Configurations

VOLTAGE	POLARITY	INLET PART # WITHOUT LUG	INLET PART # ON ANGLE ADAPTER	PLUG PART # ON HANDLE
≤ 250 V	L1	44-48001-P80	44-49001-P80	44-41001-P80
≤ 250 V	L2	44-48002-P80	44-49002-P80	44-41002-P80
≤ 250 V	L3	44-48003-P80	44-49003-P80	44-41003-P80
≤ 250 V	NEUTRAL	44-4800N-P80	44-4900N-P80	44-4100N-P80
	GROUND	44-4800T-P80	44-4900T-P80	44-4100T-P80
	POSITIVE	44-4800P	44-4900P	44-4100P
	NEGATIVE	44-4800M	44-4900M	44-4100M
> 250 V	L1	44-48001-P88	44-49001-P88	44-41001-P88
> 250 V	L2	44-48002-P88	44-49002-P88	44-41002-P88
> 250 V	L3	44-48003-P88	44-49003-P88	44-41003-P88
> 250 V	NEUTRAL	44-4800N-P88	44-4900N-P88	44-4100N-P88

Suffix	Range
-5B	.875 - 1.000"
-5C	1.000 - 1.125"
-5D	1.125 - 1.250"
-5E	1.250 - 1.375"
-8A	1.250 - 1.375"
-8B	1.312 - 1.437"
-8C	1.438 - 1.562"
-8D	1.562 - 1.688"

Contact MELTRIC for IEC/CE
Part Numbers

*Note: Plugs and Connectors come standard with .750-.875 cable range. For other sizes please refer to table to the left.

INSTALLATION ACCESSORIES – SIZE S

When properly installed, all accessories meet or exceed the environmental ratings of the devices they are mounted to; unless otherwise noted.

Use with angle 45° or
direct mount



(Bolt Included)



Use with handle for
cord mounting

CRIMPING LUGS

INTERNAL DIAMETER		STRAIGHT W/TERMINAL	STRAIGHT THREADED	FLEXIBLE WIRING*	COARSE WIRING
in	mm	PART #	PART #	AWG	AWG
.43	11	454A50C	454A50D	1/0	2/0
.51	13.1	454A70C	454A70D	2/0, 3/0	3/0, 4/0
.57	14.5	454A95C	454A95D	4/0	250
.64	16.2	454A12C	454A12D	262	300
.71	18	454A15C	454A15D	300, 313	350
.81	20.6	454A18C	454A18D	350+, 373	400, 500
.91	23.1	454A24C	454A24D	444+, 500, 535	600
1.03	26.1	454A30C	454A30D	646	750
1.15	29.2	454A40C	454A40D	750, 777+	800

Notes: *Class H & I. UL listing performed with Greenlee EK6IDL11 dieless tool and Dewalt DCE300M2 with Greenlee KC12 dies. + Only for use with Greenlee EK6IDL11 dieless tool.

HANDLES



HANDLE	CABLE OUTSIDE DIAMETER	PART #
	.750-.875"	44-4A753-A
	.875-1.000"	44-4A753-B
	1.000-1.125"	44-4A753-C
	1.125-1.250"	44-4A753-D
	1.250-1.375"	44-4A753-E
	1.250-1.375"	44-4A783-A
	1.312-1.437"	44-4A783-B
	1.438-1.562"	44-4A783-C
	1.562-1.688"	44-4A783-D

ANGLES



METAL ANGLE	PART #
45°	454A027

ACCESSORIES



DRAWBAR	PART #
handle	454A876
plate	454A396
handle + plate	454A376

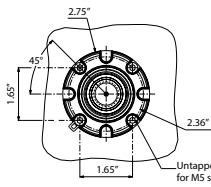
Dimensions Inlet/Receptacle – Provided in Inches

Dimensions do not show drawbar, are for reference only and may change depending on accessories used. For precise dimensions contact MELTRIC Engineering.

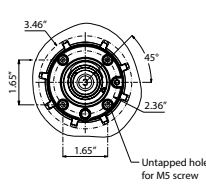
SCAN
ME >>>



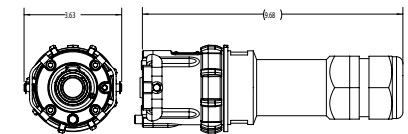
Inlet



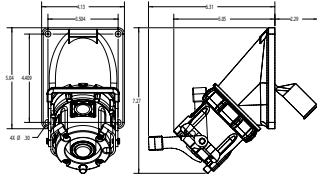
Receptacle



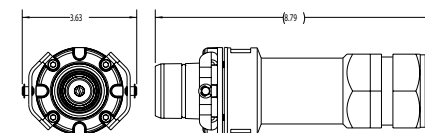
Connector on Handle



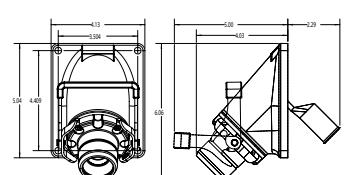
Receptacle on Angle Adapter



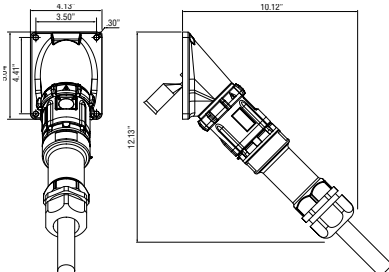
Plug on Handle



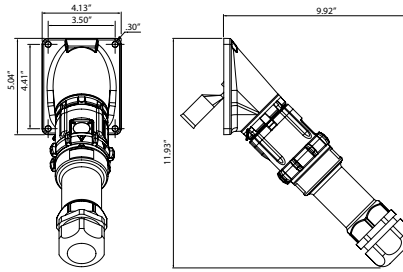
Inlet on Angle Adapter



45° Inclined Receptacle/Angle with Plug



45° Inclined Inlet/Angle with Connector



Visit meltric.com to view and download detailed SP drawing files.