

Image may differ from product. See technical specification for details.

## P2B 108-SRB-CLH

**Pillow block roller bearing unit, two-bolt, SKF ConCentra locking**

Pillow (plummer) block roller bearing units and take-up roller bearing units consist of a spherical or tapered roller bearing mounted in a non-split housing that can be bolted to a support surface. This variant has a spherical roller bearing, a two-bolt base and SKF ConCentra locking, creating a true concentric tight fit, and setting the correct internal clearance within the bearing. The units are sealed and lubricated and ready to use. This bearing unit covers a wide range of requirements, in inch dimensions.

- Ready to mount
- Robust
- Factory lubricated and sealed
- Quick mounting
- Long service life

## Overview

### Dimensions

Shaft diameter	38.1 mm
Centre height (pillow block)	47.625 mm
Housing overall width	53.975 mm
Centre distance between bolt holes	129.381 mm
Attachment bolt diameter	12.7 mm
Bearing width, total	64.691 mm

### Performance

Basic dynamic load rating	98.5 kN
Basic static load rating	91.5 kN
Limiting speed	8 000 r/min

### Properties

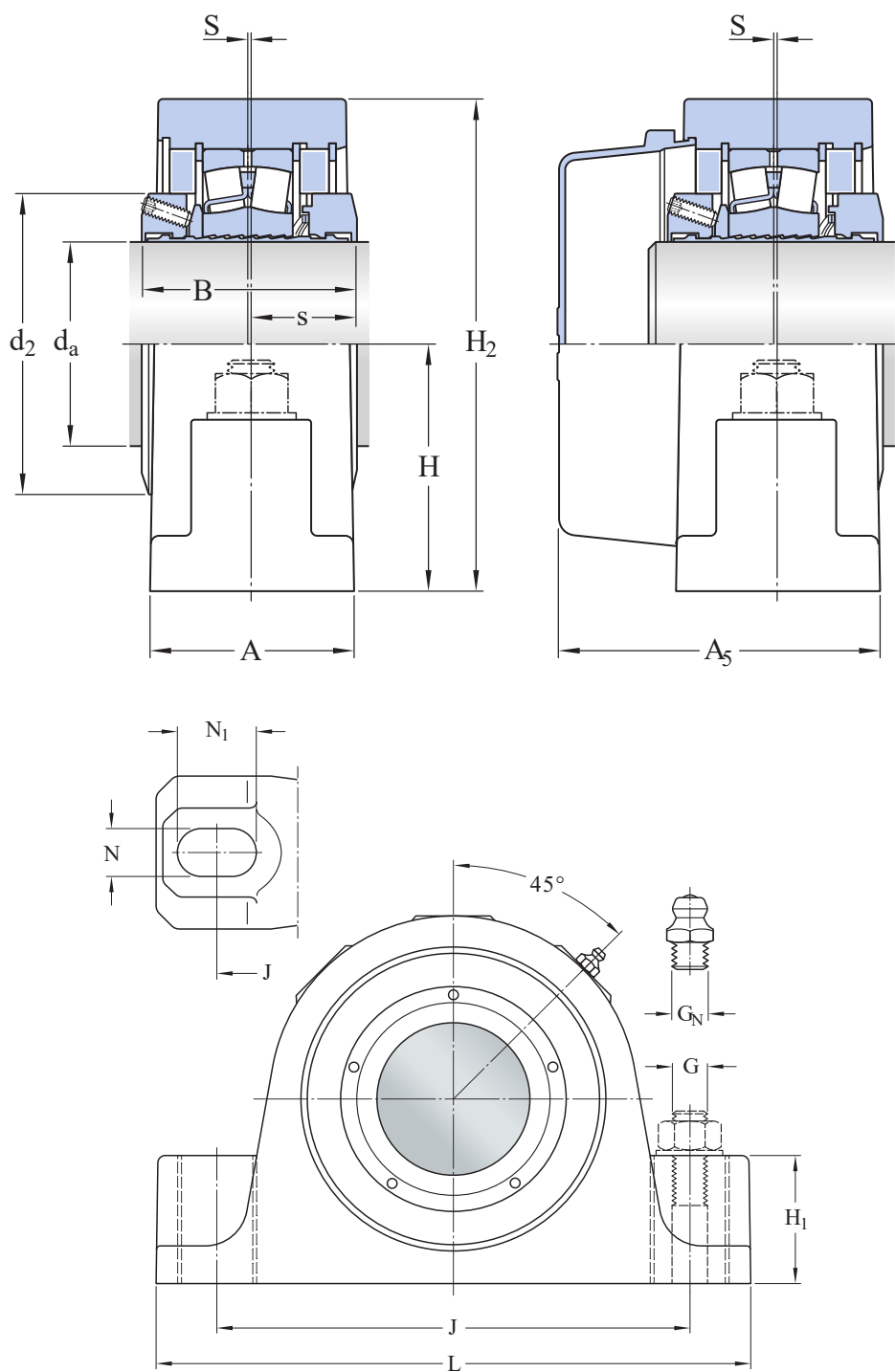
Housing type	Pillow block
Number of bolt holes for fasteners	2
Bearing insert	Spherical roller bearing
Retaining feature, inner ring	SKF ConCentra
Bearing position	Locating
Bore type	Cylindrical
Material, housing	Cast iron
Material, bearing	Bearing steel
Coating	Without
Bearing housing seal type	Labyrinth seal
Sealing, unit	Optional end cover
Lubricant	Grease
Relubrication hole	With
Grease fitting	With

### Logistics

Product net weight	3.2 kg
eClass code	23-05-16-90
UNSPSC code	31171537

## Technical specification

Metric/inch series	Inch
Bearing insert	Spherical roller bearing
Bearing position	Locating
Locking method	SKF ConCentra
Bearing housing seal type	Labyrinth seal



## Dimensions

da	38.1 mm	Shaft diameter
d2	65.989 mm	Collar outer diameter
A	53.975 mm	Housing foot width
A5	76.994 mm	Width including end cover
B	64.691 mm	Inner ring width
H	47.625 mm	Height base to center
H1	30.163 mm	Housing foot height
H2	100.013 mm	Housing height
J	min. 119.063 mm	Distance of attachment bolts, min.
J	max. 139.7 mm	Distance of attachment bolts, max.
J	129.381 mm	Distance of attachment bolts
L	174.625 mm	Housing length
N	15.875 mm	Width foot slot width
N1	26.194 mm	Length of attachment bolt hole
s	32.544 mm	Centre line unit to side face of inner ring
S	0.794 mm	Centre line of "fixed" bearing

## GREASE FITTING

GN	1/8-27 NPT	Thread of grease fitting
----	------------	--------------------------

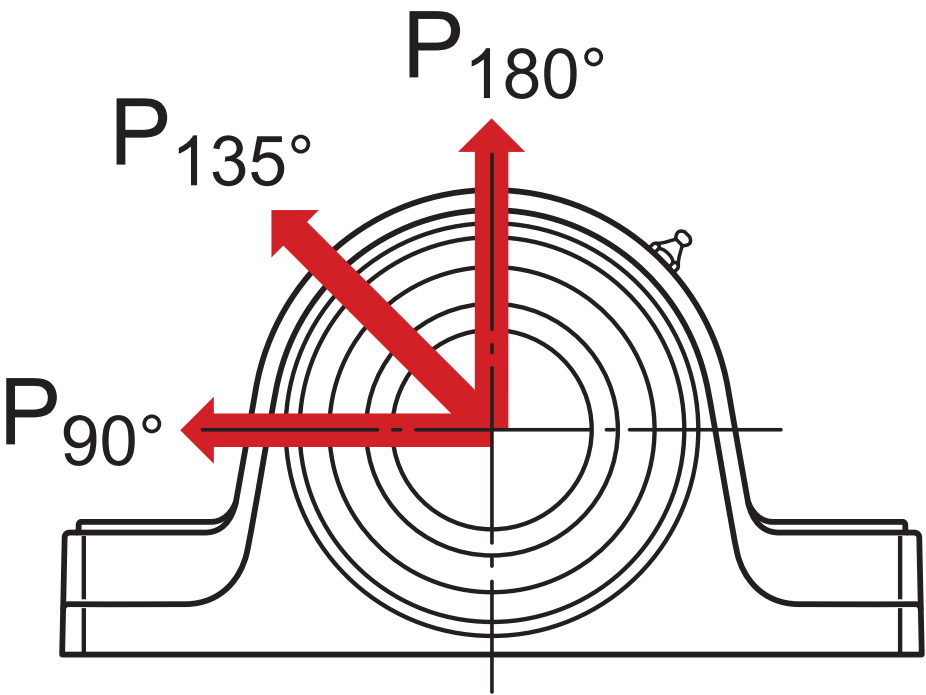
## Calculation data

Basic dynamic load rating	C	98.5 kN
Basic static load rating	C0	91.5 kN
Fatigue load limit	Pu	10 kN
Limiting speed		8 000 r/min
Limiting value	e	0.28
Calculation factor	Y1	2.4
Calculation factor	Y2	3.6
Calculation factor	Y0	2.5
Bearing mean diameter	dm	59.944 mm

Axial holding force of the locking mechanism

$P_a$

14.9 kN



Safe loads

$P_{90^\circ}$	27.6 kN	Safe load at 90°
$P_{135^\circ}$	14.2 kN	Safe load at 135°
$P_{180^\circ}$	17.3 kN	Safe load at 180°

Mounting information

Attachment bolt diameter	G	0.5 in
Set screws		M6-1 x 16mm
Number of set screws		3
Tightening torque for set screws		7.909 N·m
Grease quantity for relubrication		4 g




Compatible products

Recommended product

End cover for bearing units	<a href="#">ECY 208</a>
-----------------------------	-------------------------



More Information

<div> <b>Product details</b></div> <div><a href="#">Pillow block units - metric series</a></div> <div><a href="#">Pillow block units - inch series</a></div> <div><a href="#">Permissible misalignment</a></div> <div><a href="#">Locating / non-locating support</a></div> <div><a href="#">Loads</a></div> <div><a href="#">Temperature limits</a></div> <div><a href="#">Permissible speed</a></div> <div><a href="#">Lubrication</a></div> <div><a href="#">Mounting and dismounting</a></div> <div><a href="#">Condition Monitoring</a></div> <div><a href="#">Associated products</a></div> <div><a href="#">Ordering information</a></div> <div><a href="#">Designation system for SKF Pillow block roller bearing units</a></div>	<div> <b>Engineering information</b></div> <div><a href="#">Principles of selecting mounted bearing solutions</a></div> <div><a href="#">Bearing failure and how to prevent it</a></div>	<div> <b>Engineering tools</b></div> <div><a href="#">SKF Product select</a></div> <div><a href="#">SKF mounting and dismounting instructions</a></div>
--	---	--

# Terms of use

By accessing and using this website / app owned and published by AB SKF (publ.) (556007-3495 · Gothenburg) ("SKF"), you agree to the following terms and conditions:

## **Warranty Disclaimer and Limitation of Liability**

Although every care has been taken to assure the accuracy of the information on this website / app, SKF provides this information "AS IS" and DISCLAIMS ALL WARRANTIES, EXPRESS OR IMPLIED, INCLUDING, BUT NOT LIMITED TO, IMPLIED WARRANTIES OF MERCHANTABILITY AND FITNESS FOR A PARTICULAR PURPOSE. You acknowledge that your use of this website / app is at your sole risk, that you assume full responsibility for all costs associated with use of this website / app, and that SKF shall not be liable for any direct, incidental, consequential, or indirect damages of any kind arising out of your access to, or use of the information or software made available on this website / app.

Any warranties and representations in this website / app for SKF products or services that you purchase or use will be subject to the agreed upon terms and conditions in the contract for such product or service.

Further, for non-SKF websites / apps that are referenced in our website / app or where a hyperlink appears, SKF makes no warranties concerning the accuracy or reliability of the information in these websites / apps and assumes no responsibility for material created or published by third parties contained therein. In addition, SKF does not warrant that this website / app or these other linked websites / apps are free from viruses or other harmful elements.

## **Third Party Services**

When viewing YouTube content via the SKF website(s) (i.e. using [YouTube API Services](#)), you agree to be bound by the [YouTube Terms of Service](#).

## **Copyright**

Copyright in this website / app copyright of the information and software made available on this website / app rest with SKF or its licensors. All rights are reserved. All licensed material will reference the licensor that has granted SKF the right to use the material. The information and software made available on this website / app may not be reproduced, duplicated, copied, transferred, distributed, stored, modified, downloaded or otherwise exploited for any commercial use without the prior written approval of SKF. However, it may be reproduced, stored and downloaded for use by individuals without prior written approval of SKF. Under no circumstances may this information or software be supplied to third parties.

This website /app includes certain images used under license from Shutterstock, Inc.

## **Trademarks and Patents**

All trademarks, brand names, and corporate logos displayed on the website / app are the property of SKF or its licensors, and may not be used in any way without prior written approval by SKF. All licensed trademarks published on this website / app reference the licensor that has granted SKF the right to use the trademark. Access to this website / app does not grant to the user any license under any patents owned by or licensed to SKF.

## **Changes**

SKF reserves the right to make changes or additions to this website / app at any time.