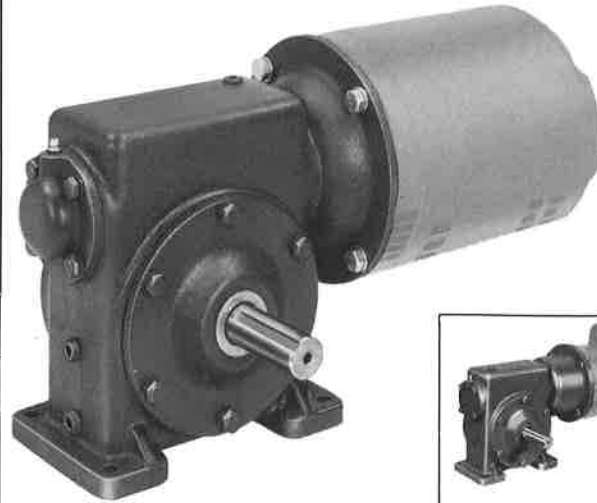




single reduction — motorized and gearmotor

SERIES: MCT- MCTW (WITH MOTOR)

GEAR RATIOS AVAILABLE 5:1 THRU 60:1
 COMPLETE TORQUE AND HP RATINGS PAGES 122-150
 OVERHUNG LOAD RATINGS PAGES 123-223
 SERVICE FACTORS PAGE 230
 COUPLING ADAPTERS PAGE 120
 HYDRAULIC MOTOR ADAPTERS PAGE 116



See page 120.

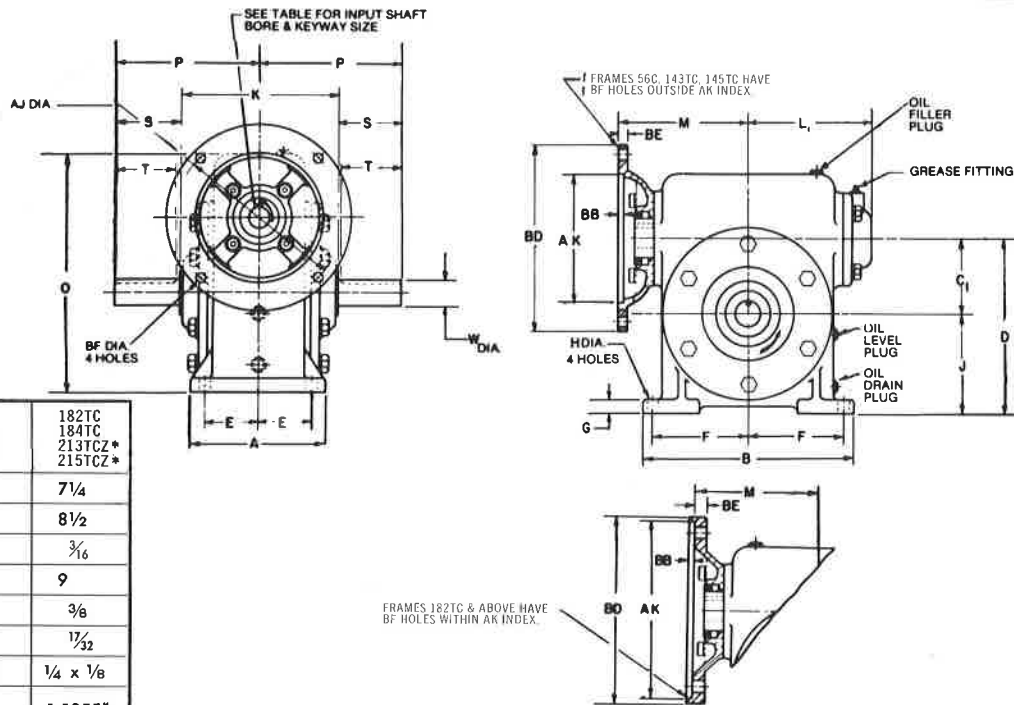
TABLE OF WEIGHTS

Unit	1	2	3	4	5	6	7	8
Net Weight	14	22	21	36	53	67	94	130

Alloy steel slow speed shafts available.
 Units #3, 4, 5, 6, 7, and 8 are available with hollow output shafts, see page 58-60.

DIMENSIONS :

Dimensions apply to speed reducer only. For motor dimensions see next page.



FRAME, KEYWAY and BORE DIMENSIONS

Frame No.	56C	143TC 145TC	182TC 184TC 213TCZ* 215TCZ*
AJ	5 ⁷ / ₈	5 ⁷ / ₈	7 ¹ / ₄
AK	4 ¹ / ₂	4 ¹ / ₂	8 ¹ / ₂
BB	3 ¹ / ₁₆	3 ¹ / ₁₆	3 ¹ / ₁₆
BD	6 ¹ / ₂	6 ¹ / ₂	9
BE	5 ¹ / ₁₆	5 ¹ / ₁₆	3 ³ / ₈
BF	13 ³ / ₃₂	13 ³ / ₃₂	17 ³ / ₃₂
Keyway	3 ¹ / ₁₆ x 3 ³ / ₃₂	3 ¹ / ₁₆ x 3 ³ / ₃₂	1 ¹ / ₄ x 1 ¹ / ₈
Bore	+ .001 - .000	.6255	.8755
			1.1255*

SPEED REDUCER DIMENSIONS (in inches)

Refer to D Line for these sizes.

Unit No.	A	B	C ₁	D	E	F	G	H*	J	K	L ₁	M	O	P	Slow Speed Dimensions				Maximum Frame Size
															W*	S	T	Keyway	
**1MCTR	4	5	1.33	3.33	1 ⁵ / ₈	2 ¹ / ₈	3 ³ / ₈	9 ³ / ₃₂	2	4	3 ³ / ₁₆	3 ³ / ₈	4 ⁵ / ₈	4	.625	2	1 ³ / ₄	3 ¹ / ₁₆ x3 ³ / ₃₂	56C
**2MCTR	4 ³ / ₈	5 ¹ / ₂	1 ³ / ₄	4 ⁹ / ₁₆	1 ³ / ₄	2 ⁹ / ₁₆	1 ¹ / ₂	13 ³ / ₃₂	2 ¹ / ₁₆	4 ³ / ₄	3 ³ / ₁₆	3 ³ / ₈	6	4 ¹ / ₂	.750	2 ¹ / ₈	2	3 ¹ / ₁₆ x3 ³ / ₃₂	145TC-184C
3MCT	4 ³ / ₄	6	2	4 ⁵ / ₈	1 ⁷ / ₈	2 ¹ / ₂	1 ¹ / ₂	13 ³ / ₃₂	2 ⁵ / ₈	4 ³ / ₄	3 ³ / ₁₆	3 ⁷ / ₈	6 ¹ / ₄	4 ³ / ₄	.875	2 ³ / ₈	2 ¹ / ₄	3 ¹ / ₁₆ x3 ³ / ₃₂	145TC-184C
4MCT	4 ³ / ₄	7 ¹ / ₂	2 ⁵ / ₈	6 ¹ / ₈	1 ⁷ / ₈	3 ¹ / ₄	1 ¹ / ₂	13 ³ / ₃₂	3 ¹ / ₂	5 ³ / ₈	4 ¹ / ₄	4 ¹ / ₂	8 ³ / ₈	5 ³ / ₈	1.000	2 ¹ / ₁₆	2 ¹ / ₂	1 ¹ / ₄ x1 ¹ / ₈	145TC-184C
5MCT	6	8 ¹ / ₄	3	7	2 ³ / ₈	3 ¹ / ₂	3 ³ / ₈	9 ¹ / ₁₆	4	6	4 ¹ / ₂	5 ¹ / ₈	9 ⁵ / ₈	5 ⁷ / ₈	1.250	2 ⁷ / ₈	2 ³ / ₄	1 ¹ / ₄ x1 ¹ / ₈	184TC-215C
6MCT	6 ¹ / ₄	9 ¹ / ₄	3 ¹ / ₂	8	2 ⁵ / ₈	4 ¹ / ₈	3 ³ / ₈	9 ¹ / ₁₆	4 ¹ / ₂	7 ¹ / ₄	5	5 ¹ / ₂	11	7	1.500	3 ³ / ₈	3 ¹ / ₄	3 ³ / ₁₆ x3 ³ / ₁₆	184TC-215C
7MCT	7	11	4	9	2 ⁷ / ₈	4 ⁷ / ₈	3 ³ / ₈	9 ¹ / ₁₆	5	7 ¹ / ₄	5 ³ / ₈	6 ³ / ₈	13	7 ¹ / ₂	1.750	3 ⁷ / ₈	3 ³ / ₄	3 ³ / ₁₆ x3 ³ / ₁₆	184TC-215C
8MCT	8	12 ¹ / ₂	4.6	10.1	3 ³ / ₄	5 ¹ / ₂	3 ³ / ₄	11 ¹ / ₁₆	5 ¹ / ₂	9 ¹ / ₄	6 ⁵ / ₈	7 ¹ / ₈	14 ¹ / ₂	8 ¹ / ₂	1.750	3 ⁷ / ₈	3 ³ / ₄	3 ³ / ₁₆ x3 ³ / ₁₆	184TC-215C

*Slow speed shaft diameter tolerance + .000—-.001. For construction purposes, send for certified dimension sheets.

**Models 1MCTR and 2MCTR; models 3MCT thru 8MCT, as shown.

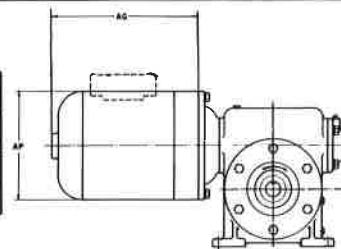
**Models 1MCT and 2MCT have footless housings. Consult factory.

single reduction motorized and gearmotor

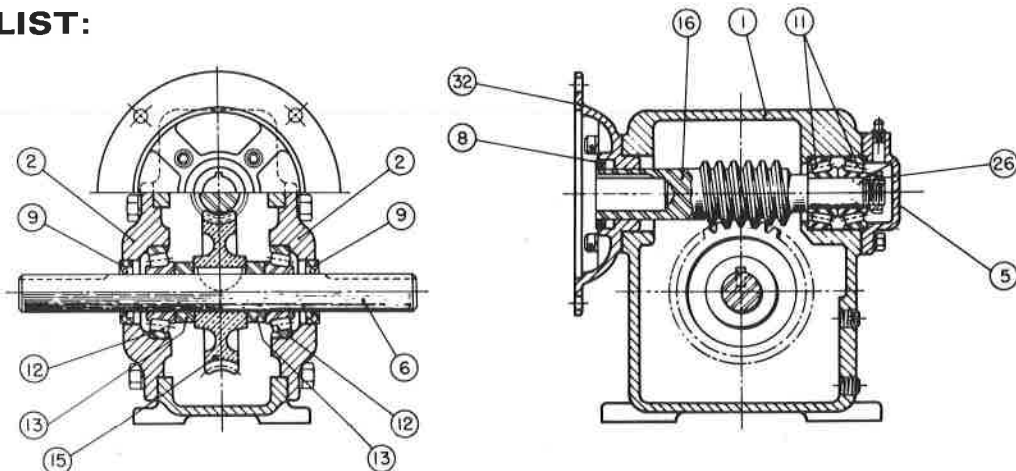
MOTOR DIMENSIONS:

H.P. @ 1800 RPM	1/6		1/4		1/3		1/2		3/4		1	1 1/2	2	3	5
Phase	Single*	Three	Single*	Three	Single*	Three	Single*	Three	Single*	Three	Three	Three	Three	Three	Three
AG	7 1/2	7 1/2	7 3/4	8 1/4	8 1/4	8 3/4	8 3/4	8 3/4	9 1/4	9 1/4	9 3/4	10 3/4	10 3/4	12 1/4	13 3/4
AP	5 21/32	5 21/32	5 21/32	5 21/32	6 31/64	6 31/64	6 31/64	6 31/64	6 31/64	6 31/64	6 31/64	6 31/64	6 31/64	10 11/32	10 11/32

*Single phase motor is capacitor start. Dimensions as shown are for open dripproof enclosure. Motors can be furnished open dripproof or enclosed.



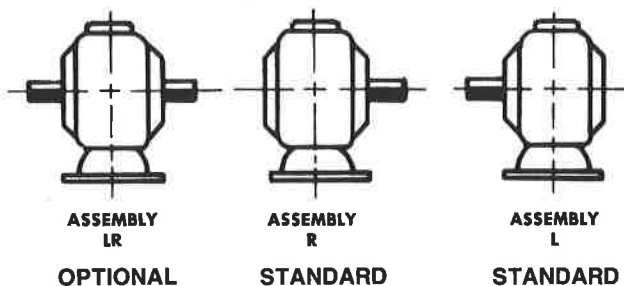
PARTS LIST:



PARTS INDEX

Part No.	Description	Part No.	Description
1	Housing	11	Roller Bearings High Speed
2	Slow Speed Cover — Open	12	Roller Bearings Slow Speed
3	Slow Speed Cover — Closed Not Shown	13	Slow Speed Spacer (Not used on #2MCTR)
5	High Speed Cover — Closed	15	Slow Speed Worm Gear — Bronze
6	Slow Speed Shaft — Double Extension	16	High Speed Worm and Shaft Integral
7	Slow Speed Shaft — Single Extension Not Shown	26	High Speed Lock Nut
8	Oil Seal High Speed Motor Adapter End	32	Motor Adapter—4 1/2" (AK) Register Dia.
9	Oil Seal Slow Speed	32A	Motor Adapter 8 1/2" (AK) Register Dia.
		32B	Motor Adapter Spacer (Size 4 only)

SHAFT ARRANGEMENTS:



- (A) When facing the input shaft, slow speed shaft is to left (L), or right (R) or both (LR).
- (B) No extra charge for the standard assemblies provided shaft extensions are of standard length.
- (C) The input shaft may be driven in either direction.
- (D) Units may be mounted in any position, (ceiling, sidewall, etc.), if specified when ordered.