

Information

This product
- is a special design

Catalog designation

RF27 DRN90S4
Helical gearmotors R..DRN.. (IE3)

Click these icons for further information in Online Support

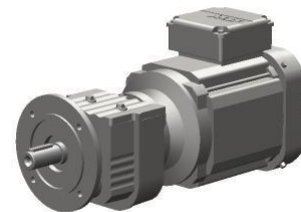


Reference data

Transaction : 424085258
Item : 100

Product data

Speed [r/min]	: 1762 / 79
Total ratio [i]	: 22,32 / infinite
Ma max [Nm]	: 130
Ta max [lb-in]	: 1.150
Output torque [Nm]	: 133
Output torque [lb-in]	: 1180
Service factor SEW-FB	: 1,00
Mounting position	: MX basic mounting position MX according to manufacturing specifications 01 903_97 Breather valve not installed by SEW but enclosed. The CUSTOMER has to install the breather valve and adapt the oil quantity according to mounting position.
Term.box.pos.[°] / cable entry	: 270 (T) / position 3
Lubricant / -volume [l]	: CLP 220 Miner.Oil / 0,70
Lubricant volume [US gal]	: 0.19
Corrosion protection	: Yes
Special measure	: Contour recesses injected with rubber.
Surface protection	: OS4 to technical data sheet 01802_94
Paint coat	: Stainless Steel Gray
Gear unit	: RF27
Output shaft end	: 25022083
Special dimension sheet shaft	: 63365553
Flange	: 160mm
Output oil seal	: 2 oil seals
Special unique feature	: As described above
Breather valve	: Nirosta type
Breather variant	: Standard
Delivery state	: Screw plug mounted for transport, breather valve enclosed
Special manuf. specifications	: 01903_97
Documentation no. A	: 31978088
Spare parts list	: You can find the SWPL (spare and wearing parts list) under the



serial number in the Online Support.

Motor	: DRN90S4
Motor power [kW]	: 1.1
Motor power [HP]	: 1.5
Motor frequency [Hz]	: 60
Cyclic duration factor S1-S10	: S1
Motor voltage [V] / conn. type	: 230/460 double star/star
Nominal current [A]	: 4,60 / 2,30
cos phi	: 0,69
Wiring diagram	: R76 / 680430506
Thermal cl.[°C]/Enclosure[IP]	: 155(F) / 66
Service factor motor	: 1.15
International efficiency class	: IE3
Efficiency at 50/75/100% Pn [%]	: 83,5 / 86,1 / 86,5
Design specification	: USA (UR) /Canada (CSA)
CE mark	: No
EISA identification	: Yes, conform to EISA
K.V.A.code	: M
Design	: NEMA C
Fan guard	: Metal fan guard
Terminal box	: Terminal box lower part made of aluminum with tapped hole 2xNPT 1/2"
Encapsulated design	: Stator winding including terminal box recess encapsulated.
CT speed range	: 300-1800rpm
Documentation no. A	: 25957074 26861313 30589460
Spare parts list	: You can find the SWPL (spare and wearing parts list) under the serial number in the Online Support.
Nameplate	: English / Imperial units
Nameplate position	: 180°
Opera.instr. A lang./quantity	: English / 0
Parts list/language/quantity	: English / 0
Commodity code	: 85015220
Weight	: 23.74 kg