

Catalog designation

KAF87 AMS182
Bevel-helical gear units K..

Click these icons for further information in Online Support

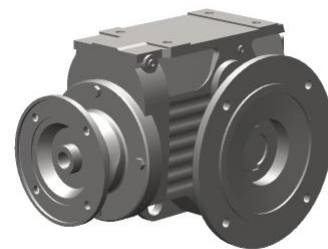


Reference data

Transaction : 424224285
Item : 100

Product data

Speed [r/min]	: 1750 / 12
Total ratio [i]	: 147,32 / finite
No. of teeth nom./denominator	: 5893/40
Ma max [Nm]	: 2.700
Ta max [lb-in]	: 23.900
Mounting position	: M3A
Lubricant / -volume [l]	: CLP 220 Miner.Oil / 9,00
Lubricant volume [US gal]	: 2.40
Corrosion protection	: Yes
Special measure	: Contour recesses injected with rubber.
Surface protection	: OS4 to technical data sheet 01802_94
Paint coat	: Stainless Steel Gray
Gear unit	: KAF87
Ma max G [Nm]	: 2700
Ma max G [lb-in]	: 23900
Hollow shaft	: 2.375 inch
Design	: B5-flange-mounted version and hollow shaft
Safety cover	: None
Flange	: 350mm
Breather variant	: Standard
Delivery state	: Breather valve mounted
Screw plug bore dimens. sheet	: 33140_09
Documentation no. A	: 31978088
Spare parts list	: You can find the SWPL (spare and wearing parts list) under the serial number in the Online Support.
Adapter	: AMS182
Input flange	: Centering diameter 215.9mm, hole circle 184mm, bore 15mm
Coupling/bore D1	: 1.125 inch (28.575mm)
Max. insertion depth (mot. SE)	: 66.55mm
Spare parts list	: You can find the SWPL (spare and wearing parts list) under the serial number in the Online Support.
Nameplate	: English / Imperial units
Nameplate position	: Attached to the gear unit



Opera.instr. A lang./quantity	: English / 0
Parts list/language/quantity	: English / 0
Commodity code	: 84834023
Weight	: 110.69 kg