

Catalog designation

WAF20 DRN63M2
SPIROPLAN® gearmotor W..DRN.. (IE3)

Click these icons for further information in Online Support

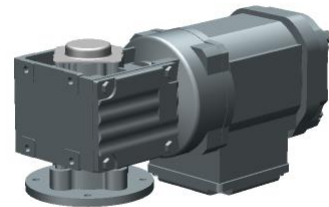


Reference data

Transaction : 424487689
Item : 100

Product data

Speed [r/min]	: 3395 / 237
Total ratio [i]	: 14,33 / infinite
Ma max [Nm]	: 45
Output torque [Nm]	: 8
Service factor SEW-FB	: 5,30
Mounting position	: M5A
Term.box.pos.[°] / cable entry	: 0 (R) / normal
Lubricant / -volume [l]	: SEW PG 460 Synth.Oil / 0,24
Surface protection	: OS1 to technical data sheet 01802_94
Paint coat	: Top coat RAL7031 (blue gray)
Gear unit	: WAF20
Hollow shaft	: 20mm
Design	: B5-flange-mounted version and hollow shaft
Safety cover	: With fixed flat plastic safety cover for the hollow shaft
Flange	: 120mm
Input oil seal material	: FKM oil seal with optimized spring force
Documentation no. A	: 31988660
Spare parts list	: You can find the SWPL (spare and wearing parts list) under the serial number in the Online Support.
Motor	: DRN63M2
Motor power [kW]	: 0.25
Motor power [HP]	: 0.33
Motor frequency [Hz]	: 60
Cyclic duration factor S1-S10	: S1
Motor voltage [V] / conn. type	: 230/400 delta/star
Nominal current [A]	: 1,00 / 0,57
cos phi	: 0,79
Wiring diagram	: R13 / 680010306
Thermal cl.[°C]/Enclosure[IP]	: 155(F) / 55
International efficiency class	: IE3
Efficiency at 50/75/100% Pn [%]	: 67,0 / 69,8 / 70,0
CE mark	: Yes
Documentation no. A	: 25957120 26861372 30589517
Spare parts list	: You can find the SWPL (spare and wearing parts list) under the



serial number in the Online
Support.

Nameplate	: English
Nameplate position	: 270°
Opera.instr. A lang./quantity	: Swedish / 0
Parts list/language/quantity	: Swedish / 0
Commodity code	: 85015100
Weight	: 8.21 kg