

Quotation

Quotation-No.: 424793561
Date: 10/18/2025
Customer no.: 87146476
Phone: 323 263 4131

Page 1 / 5

MRO Supply
 Mechanical Drives & Belting
 AKA Los Angeles Rubber Company
 2915 E Washington Blvd
 Los Angeles CA 90023-4218

SEW-EURODRIVE Contact
SHERYLE IRBY

Customer Service
 Phone 864-439-7537 - 11148 Fax 864 - 439-7830
 sirby@seweurodrive.com

Southern California
 District Sales Manager
 Phone 323-201-1206
 amartinez@seweurodrive.com

Reference: 05.7687387101.0001.18
Contact: MRO Supply
 RFQ#3032386 Attn: Mark Richardson
Request date: 10/17/2025

The prices quoted or agreed upon by SEW-EURODRIVE include standard duties and customs fees in effect at the time of quotation. However, if new or increased tariffs (including but not limited to sudden, provisional, or emergency tariffs), duties, or similar charges are imposed before delivery of goods, SEW-EURODRIVE reserves the right to pass some or all these additional costs on to the customer. The customer agrees to pay these additional charges within 30 days of receiving an invoice or written notice from SEW-EURODRIVE. Failure to pay may result in the suspension of shipments, cancellation of open orders, or any other remedies available to SEW-EURODRIVE under these Terms and Conditions or applicable law.

Thank you for the opportunity to provide this quotation. Please review all specifications for accuracy and provide the quotation number with your order.

Lead time is subject to parts availability and production capacity at the time of order processing.

Itm.	Quantity	Description Part No. Your product No.:	price/pc net USD	total price net USD
01	1 EA	AC motor DRN80M4/BE1HR/FG The net value of this item includes a material and logistics surcharge of 105.57 USD.	708.84	708.84
Total				708.84
Quotation Total USD				708.84

For detailed information about the items please see the following pages.

Terms of payment: Net 30 days from day of invoice
Terms of shipment: indicate with order
Validity: 11/18/2025
Delivery time: approx. 4 weeks

Southeast Region Assembly Center
SEW-Eurodrive, Inc.
 220 Finch Rd. Wellford, SC 29385
 P.O. Box 518
 Lyman, SC 29365
 Tel: (864) 439-7537
 Fax: (864) 439-7830
 cslyman@seweurodrive.com

Industrial Gear Assembly Center
SEW-Eurodrive, Inc.
 148 Finch Rd. Wellford, SC 29385
 P.O. Box 518
 Lyman, SC 29365
 Tel: (864) 439-7537
 Fax: (864) 661-1167
 IGSSOrders@seweurodrive.com

Midwest Region Assembly Center
SEW-Eurodrive, Inc.
 2001 West Main St.
 Troy, OH 45373
 Tel: (937) 335-0036
 Fax: (937) 332-0038
 cstroy@seweurodrive.com

Northeast Region Assembly Center
SEW-Eurodrive, Inc.
 2107 High Hill Rd.
 P.O. Box 481
 Bridgeport, NJ 08014
 Tel: (856) 467-2277
 Fax: (856) 845-3179
 csbridgeport@seweurodrive.com

Southwest Region Assembly Center
SEW-Eurodrive, Inc.
 202 W. Danieldale Rd.
 DeSoto, TX 75115
 Tel: (214) 330-4824
 Fax: (214) 330-4724
 csdallas@seweurodrive.com

Western Region Assembly Center
SEW-Eurodrive, Inc.
 30599 San Antonio St.
 Hayward, CA 94544
 Tel: (510) 487-3660
 Fax: (510) 487-6433
 cshayward@seweurodrive.com

Quotation

**Quotation-No.: 424793561**

Date: 10/18/2025

Page 2 / 5

Ship-to party: TO BE ADVISED
To Be Advised , Lyman SC 99999
CRD: Southern California

Southeast Region Assembly Center
SEW-Eurodrive, Inc.
220 Finch Rd. Wellford, SC 29385
P.O. Box 518
Lyman, SC 29365
Tel: (864) 439-7537
Fax: (864) 439-7830
cslyman@seweurodrive.com

Industrial Gear Assembly Center
SEW-Eurodrive, Inc.
148 Finch Rd. Wellford, SC 29385
P.O. Box 518
Lyman, SC 29365
Tel: (864) 439-7537
Fax: (864) 661-1167
IGSSOrders@seweurodrive.com

Midwest Region Assembly Center
SEW-Eurodrive, Inc.
2001 West Main St.
Troy, OH 45373
Tel: (937) 335-0036
Fax: (937) 332-0038
cstroy@seweurodrive.com

Northeast Region Assembly Center
SEW-Eurodrive, Inc.
2107 High Hill Rd.
P.O. Box 481
Bridgeport, NJ 08014
Tel: (856) 467-2277
Fax: (856) 845-3179
csbridgeport@seweurodrive.com

Southwest Region Assembly Center
SEW-Eurodrive, Inc.
202 W. Danieldale Rd.
DeSoto, TX 75115
Tel: (214) 330-4824
Fax: (214) 330-4724
csdallas@seweurodrive.com

Western Region Assembly Center
SEW-Eurodrive, Inc.
30599 San Antonio St.
Hayward, CA 94544
Tel: (510) 487-3560
Fax: (510) 487-6433
cshayward@seweurodrive.com

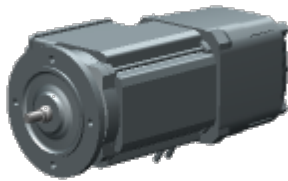
Quotation

Quotation-No.: **424793561**

Date: 10/18/2025

Page 3 / 5

Itm.	Quantity	Part No.	price/pc USD	total price USD
01	1 EA		603.27	603.27
	AC motor			
	DRN80M4/BE1HR/FG			



Remark:

Colour and technical specifications may vary from the picture shown. The technical specification is according to the following data.

Links to documentation:



Mounting position : M1
 Term.box.pos.[°] / cable entry : 180 (L) / normal
 Paint coat : Top coat RAL7031 (blue gray)

Motor : **DRN80M4/BE1HR/FG**
 Output design : FG = integral motor
 Output shaft end : pinion spigot 12mm
 With fitted pinion no. : 00041084
 Flange : FG130 D160
 Motor speed [r/min] : 1440
 Motor power [kW] : 0.75
 Motor power [HP] : 1.0
 Motor frequency [Hz] : 50
 Cyclic duration factor S1-S10 : S1
 Motor voltage [V] / conn. type : 230/400 delta/star
 Nominal current [A] : 3.05 / 1.75
 cos phi : 0.74
 Wiring diagram : [R13 / 680010506](#)

Quotation

Quotation-No.: **424793561**

Date: 10/18/2025

Page 4 / 5

Itm.	Quantity	Part No.	price/pc USD	total price USD
	Thermal cl.[°C]/Enclosure[IP]	: 155(F) / 55		
	International efficiency class	: IE3		
	Efficiency			
	at 50/75/100% Pn [%]	: 80.7 / 82.9 / 82.9		
	CE mark	: Yes		
	Brake	: BE1		
	Manual brake release	: HR = manual brake release automatic re-engaging		
	Position brake release [°]	: 123		
	Brake voltage [V]/-torque [Nm]	: 230 AC / 10		
	Brake rectifier	: BG1.5		
	Brake wiring diagram	: B100 / 690010106		
	Terminal box	: Terminal box lower part made of aluminum with tapped hole 2xM25, 1xM16		
	Documentation no. A	: 25957082 26861321 30589479		
	Nameplate	: French		
	Nameplate position	: 270°		
	Nameplate text	: R67 05.1721682202.0002.11		
	Opera.instr. A lang./quantity	: French / 0		
	Parts list/language/quantity	: French / 0		

net weight [LB] : approx. 36/EA 36/ltn.

The quoted lead time is subject to change and the delivery plant will be determined at the time of ordering

Tariff Recovery Fee 17.50 % of 603.27	105.57	105.57
Net value	708.84	708.84

Total net weight approx. 36 LB

Total	708.84
Quotation Total	USD 708.84

THIS QUOTATION SERVES AS SEW-EURODRIVE, INC.'S OFFER TO CONTRACT WITH YOU. You may, if you choose, sign and return this Quotation as acknowledgement of your acceptance of this offer, or you may communicate your acceptance via your own standard form or other written means. Net prices for the Goods and/or Services contained herein are firm unless otherwise notified by SEW. However, this does not include special costs or other charges which are outside SEW's direct control (e.g., transportation-related costs) which are estimates only

Southeast Region Assembly Center
SEW-Eurodrive, Inc.
220 Finch Rd. Wellford, SC 29385
P.O. Box 518
Lyman, SC 29365
Tel: (864) 439-7537
Fax: (864) 439-7830
cslyman@seweurodrive.com

Industrial Gear Assembly Center
SEW-Eurodrive, Inc.
148 Finch Rd. Wellford, SC 29385
P.O. Box 518
Lyman, SC 29365
Tel: (864) 439-7537
Fax: (864) 661-1167
IGSSOrders@seweurodrive.com

Midwest Region Assembly Center
SEW-Eurodrive, Inc.
2001 West Main St.
Troy, OH 45373
Tel: (937) 335-0036
Fax: (937) 332-0038
cstroy@seweurodrive.com

Northeast Region Assembly Center
SEW-Eurodrive, Inc.
2107 High Hill Rd.
DeSoto, TX 75115
Bridgeport, NJ 08014
Tel: (856) 467-2277
Fax: (856) 845-3179
csbridgeport@seweurodrive.com

Southwest Region Assembly Center
SEW-Eurodrive, Inc.
202 W. Daniel Dale Rd.
DeSoto, TX 75115
Tel: (214) 330-4824
Fax: (214) 330-4724
csdallas@seweurodrive.com

Western Region Assembly Center
SEW-Eurodrive, Inc.
30599 San Antonio St.
Hayward, CA 94544
Tel: (510) 487-3560
Fax: (510) 487-6433
cschayward@seweurodrive.com

Quotation

**Quotation-No.: 424793561**

Date: 10/18/2025

Page 5 / 5

and subject to change. SEW-EURODRIVE reserves the right to reject or cancel any and all orders which purport to hold final any amounts which SEW provides only for estimate purposes (e.g., transportation-related costs).

ACCEPTANCE OF THIS OFFER IS EXPRESSLY LIMITED TO, AND EXPRESSLY MADE CONDITIONAL ON, YOUR ACCEPTANCE OF THESE TERMS AND THE SEW EURODRIVE STANDARD TERMS AND CONDITIONS FOR THE SALE OF GOODS (A COPY OF THESE TERMS IS AVAILABLE AT https://www.seweurodrive.com/meta-pages/general_terms_and_conditions.html) as may be amended by SEW-EURODRIVE in this Quotation.

SEW-EURODRIVE, INC. HEREBY OBJECTS TO ANY DIFFERENT OR ADDITIONAL TERMS. THESE STANDARD TERMS SHALL GOVERN THIS AND ALL SUBSEQUENT TRANSACTIONS BETWEEN US.

Acknowledged and Accepted By Buyer: _____

Please provide our document number 424793561 with each correspondence.

Southeast Region Assembly Center
SEW-Eurodrive, Inc.
220 Finch Rd. Wellford, SC 29385
P.O. Box 518
Lyman, SC 29365
Tel: (864) 439-7537
Fax: (864) 439-7830
cslyman@seweurodrive.com

Industrial Gear Assembly Center
SEW-Eurodrive, Inc.
148 Finch Rd. Wellford, SC 29385
P.O. Box 518
Lyman, SC 29365
Tel: (864) 439-7537
Fax: (864) 661-1167
IGSSOrders@seweurodrive.com

Midwest Region Assembly Center
SEW-Eurodrive, Inc.
2001 West Main St.
Troy, OH 45373
Tel: (937) 335-0036
Fax: (937) 332-0038
cstroy@seweurodrive.com

Northeast Region Assembly Center
SEW-Eurodrive, Inc.
2107 High Hill Rd.
P.O. Box 481
Bridgeport, NJ 08014
Tel: (856) 467-2277
Fax: (856) 845-3179
csbridgeport@seweurodrive.com

Southwest Region Assembly Center
SEW-Eurodrive, Inc.
202 W. Danieldale Rd.
DeSoto, TX 75115
Tel: (214) 330-4824
Fax: (214) 330-4724
csdallas@seweurodrive.com

Western Region Assembly Center
SEW-Eurodrive, Inc.
30599 San Antonio St.
Hayward, CA 94544
Tel: (510) 487-3560
Fax: (510) 487-6433
cshayward@seweurodrive.com