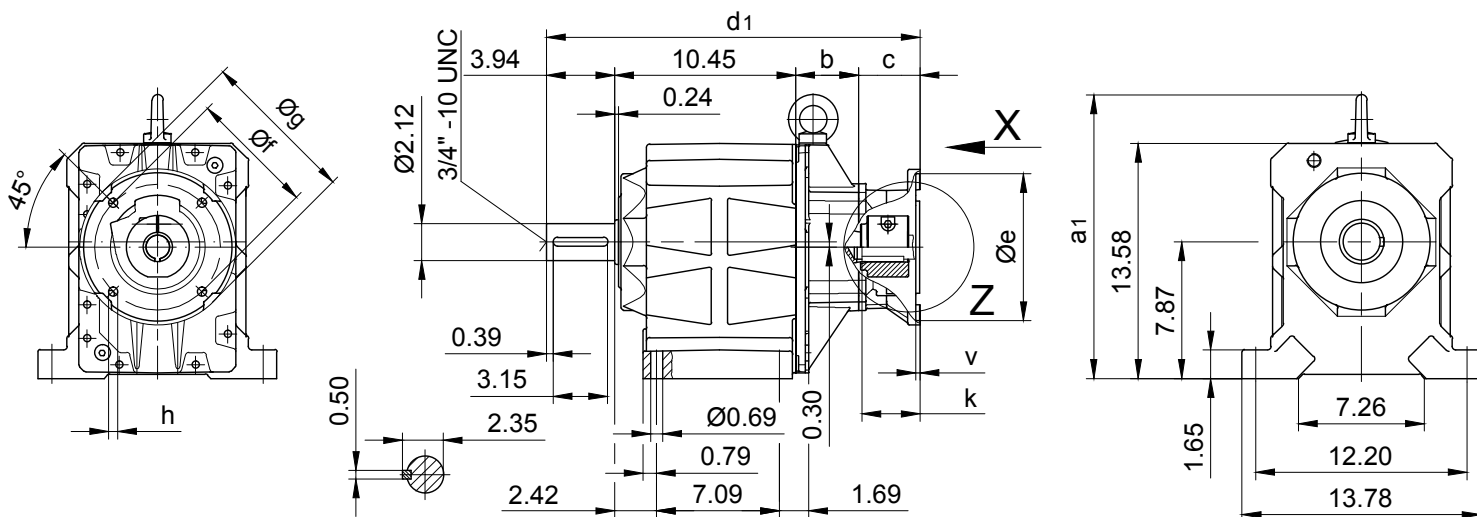


BG60-BG60Z-C-NEMA

Code -11/

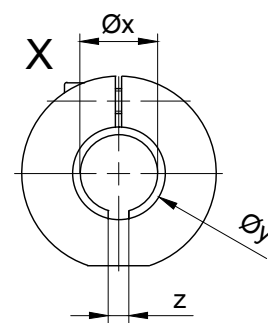
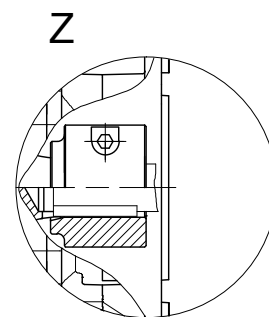
Болты и гайки M6 с фиксированным шагом с резьбой с коническими отверстиями



Shaft extension tolerance:
 up to 1.5 in diameter: +0.000 / -0.0005 in
 over 1.5 in diameter: +0.000 / -0.001 in
 Flange spigot diameter: +0.0003 / -0.0015 in

Болты и гайки M6 с фиксированным шагом с резьбой с коническими отверстиями
 Болты и гайки M6 с фиксированным шагом с резьбой с коническими отверстиями

	a ₁	a ₂	a ₃	b	c	d ₁	d ₂	d ₃
B.60Z-C-NEMA56C	16.38	25.20	16.14	7.13	2.40	23.92	17.60	22.60
B.60-C-NEMA143TC/145TC	16.38	25.20	16.14	3.37	2.38	20.14	13.82	18.82
B.60Z-C-NEMA143TC/145/TC	16.38	25.20	16.14	7.70	2.38	24.47	18.15	23.15
B.60-C-NEMA182TC/184TC	16.38	25.20	16.14	7.56	3.54	21.56	15.24	24.17
B.60Z-C-NEMA182TC/184TC	16.38	25.20	16.14	7.95	3.54	25.89	19.57	24.57
B.60-C-NEMA213TC	16.38	25.20	16.14	3.62	3.54	21.56	15.24	20.24
B.60Z-C-NEMA213TC	16.38	25.20	16.14	7.95	3.54	25.89	19.57	24.57
B.60-C-NEMA215	16.38	25.20	16.14	4.69	3.39	22.46	16.14	21.14
B.60-C-NEMA254TC/256TC	16.38	25.20	16.14	4.69	3.39	22.46	16.14	21.14



	e	f	g	h	k	v	x	y	z
B.60Z-C-NEMA56C	4.50	5.87	6.69	4xØ0.43	2.06	0.24	0.625	0.82	0.19
B.60-C-NEMA143TC/145TC	4.50	5.87	6.69	4xØ0.43	2.12	0.24	0.875	1.08	0.19
B.60Z-C-NEMA143TC/145/TC	4.50	5.87	6.69	4xØ0.43	2.12	0.24	0.875	1.08	0.19
B.60-C-NEMA182TC/184TC	8.50	7.25	8.98	4xØ0.53	2.85	0.23	1.125	1.38	0.25
B.60Z-C-NEMA182TC/184TC	8.50	7.25	8.98	4xØ0.53	2.85	0.23	1.125	1.38	0.25
B.60-C-NEMA213TC	8.50	7.25	8.98	4xØ0.53	3.35	0.23	1.375	1.70	0.31
B.60Z-C-NEMA213TC	8.50	7.25	8.98	4xØ0.53	3.35	0.23	1.375	1.70	0.31
B.60-C-NEMA215	8.50	7.25	8.98	4xØ0.53	3.33	0.23	1.375	1.70	0.31
B.60-C-NEMA254TC/256TC	8.50	7.25	8.98	4xØ0.53	3.98	0.23	1.625	2.01	0.375

