

Catalog designation

S57 DRN80MK6
Helical-worm gearmotors S..DRN.. (IE3)

Click these icons for further information in Online Support

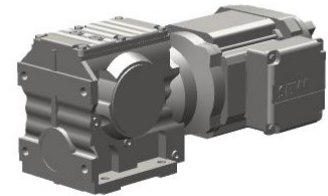


Reference data

Transaction : 425828825A
Item : 100

Product data

Speed [r/min] : 1150 / 7.3
Total ratio [i] : 158,12 / infinite
Ma max [Nm] : 295
Ta max [lb-in] : 2.610
Output torque [Nm] : 290
Output torque [lb-in] : 2570
Service factor SEW-FB : 1,05
Mounting position : M1B
Term.box.pos.[°] / cable entry : 0 (R) / normal
Lubricant / -volume [l] : CLP 680 Miner.Oil / 0,50
Lubricant volume [US gal] : 0.13
Corrosion protection : Yes
Surface protection : OS2 to technical data sheet 63080061
Paint coat : Stainless Steel Gray



Gear unit : S57
Output shaft end : 1.250x2.36 inch
Output shaft design : with keyway/with key
Design : Foot-mounted version
Breather variant : Standard
Delivery state : Breather valve mounted
Screw plug bore dimens. sheet : 02006_97
Documentation no. A : 31978088
Spare parts list : You can find the SWPL (spare and wearing parts list) under the serial number in the Online Support.

Motor : DRN80MK6
Motor power [kW] : 0.37
Motor power [HP] : 0.50
Motor frequency [Hz] : 60
Cyclic duration factor S1-S10 : S1
Motor voltage [V] / conn. type : 230/460 double star/star
Nominal current [A] : 1,88 / 0,94
cos phi : 0,63
Wiring diagram : R76R / 682410411
Connection set at factory : Double-star
Thermal cl.[°C]/Enclosure[IP] : 155(F) / 65
Service factor motor : 1.15
International efficiency class : IE3
Efficiency at 50/75/100% Pn [%] : 71,2 / 74,8 / 75,5
Design specification : USA (UR) /Canada (CSA)

CE mark	: No
EISA identification	: Yes, conform to EISA
K.V.A.code	: J
Information	: When using this combination, the bending radius of the connection cable may be undershot, which might require a threaded elbow joint for the connection cable. Please contact SEW-EURODRIVE in this case.
Terminal box	: Terminal box lower part made of aluminum with tapped hole 2xNPT 1/2"
CT speed range	: 300-1200rpm
Documentation no. A	: 25957074 26861313 30589460
Spare parts list	: You can find the SWPL (spare and wearing parts list) under the serial number in the Online Support.
Nameplate	: English / Imperial units
Nameplate position	: 270°
Opera.instr. A lang./quantity	: English / 0
Parts list/language/quantity	: English / 0
Commodity code	: 85015100
Weight	: 23.37 kg