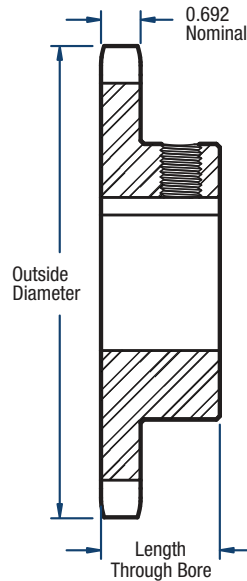


100 Sprockets

1 1/4" Pitch



BLACKSTAR®



Single- Bored to Size— Keyway and 2 Setscrews

No. of Teeth	Catalog Number	Diameters (in)		Length Through Bore (in)	Approx. Weight (lbs)	Stock Finished Bore Includes Keyway and 2 Setscrews									
		Outside	Pitch			1	1-3/16	1-1/4	—	—	—	—	—	—	—
8	H100BS8	3.77	3.266	1-7/8	2.8	1	1-3/16	1-1/4	—	—	—	—	—	—	
9	H100BS9	4.19	3.655	1-7/8	3.0	1	1-3/16	1-1/4	1-7/16	—	—	—	—	—	
10	H100BS10	4.60	4.045	1-7/8	3.9	1	1-3/16	1-1/4	1-7/16	—	—	—	—	—	
11	H100BS11	5.01	4.438	1-7/8	4.9	1	1-3/16	1-1/4	1-7/16	1-15/16	2	2-3/16	—	—	
12	H100BS12	5.42	4.830	1-7/8	6.0	1	1-3/16	1-1/4	1-7/16	1-15/16	2	2-3/16	—	—	
13	H100BS13	5.82	5.224	1-5/8	6.2	1	1-3/16	1-1/4	1-7/16	1-15/16	2	2-3/16	—	—	
14	H100BS14	6.23	5.618	1-5/8	6.6	—	—	1-1/4	1-7/16	1-15/16	2	2-3/16	—	—	
15	H100BS15	6.63	6.013	1-3/4	8.4	—	—	1-1/4	1-7/16	1-15/16	2	2-3/16	—	—	
16	H100BS16	7.03	6.408	1-3/4	9.0	—	—	—	1-7/16	1-15/16	2	2-3/16	2-7/16	2-15/16	
17	H100BS17	7.44	6.803	1-3/4	9.9	—	—	—	1-7/16	1-15/16	2	2-3/16	2-7/16	2-15/16	
18	H100BS18	7.84	7.199	1-3/4	10.6	—	—	—	1-7/16	1-15/16	2	2-3/16	2-7/16	2-15/16	
19	H100BS19	8.24	7.595	2	12.1	—	—	—	1-7/16	1-15/16	2	2-3/16	2-7/16	2-15/16	
20	H100BS20	8.64	7.990	2	13.2	—	—	—	1-7/16	1-15/16	2	2-3/16	2-7/16	2-15/16	
21	H100BS21	9.04	8.388	2	14.3	—	—	—	1-7/16	1-15/16	2	2-3/16	2-7/16	2-15/16	
22	H100BS22	9.44	8.784	2	15.1	—	—	—	1-7/16	1-15/16	2	2-3/16	2-7/16	2-15/16	
23	H100BS23	9.85	9.180	2	16.1	—	—	—	1-7/16	1-15/16	2	2-3/16	2-7/16	2-15/16	
24	H100BS24	10.25	9.576	2	18.1	—	—	—	1-7/16	1-15/16	2	2-3/16	2-7/16	2-15/16	
25	H100BS25	10.65	9.974	2	18.4	—	—	—	1-7/16	1-15/16	2	2-3/16	2-7/16	2-15/16	

Hub diameters vary to suit different bore sizes.
Sprockets with "H" prefix have hardened teeth.

NOTE: Maximum bores shown will accommodate a standard keyseat and a setscrew over the keyseat. Slightly larger bores are possible with no keyseat, a shallow keyseat, or a setscrew at an angle to the keyseat.