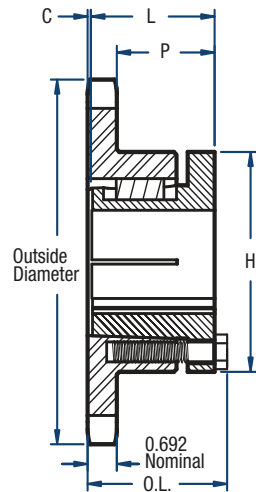


# 100 Sprockets

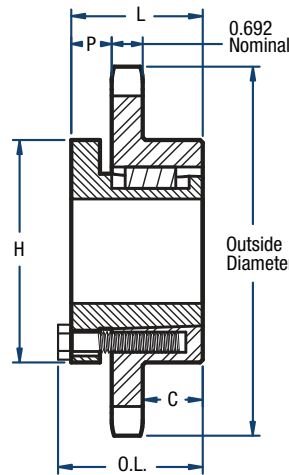
## 1 1/4" Pitch



# BLACKSTAR®



**TYPE 4**



**TYPE 5**

### Single-Split Taper Style (continued on next page)

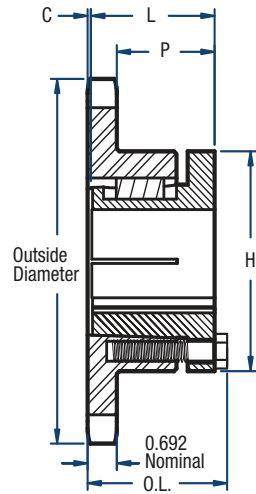
No. of Teeth	Catalog Number	Bushing	Diameters (in)		Type	Max. Bore	Dimensions (in)					Approx. Weight (lbs)	
			Outside	Pitch			OL	L	C	H	P	Bushing Only	Sprocket Only
11	H100P11	P1	5.01	4.438	4	1-3/4	2-3/16	1-15/16	0	3	1-1/4	1.3	3.0
12	H100Q12	Q1	5.42	4.830	4	2-11/16	2-27/32	2-1/2	1/16	4-1/8	1-7/8	3.5	3.5
13	H100Q13	Q1	5.82	5.224	4	2-11/16	2-27/32	2-1/2	1/16	4-1/8	1-7/8	3.5	4.3
14	H100Q14	Q1	6.23	5.618	4	2-11/16	2-25/32	2-1/2	0	4-1/8	1-13/16	3.5	5.6
15	H100Q15	Q1	6.63	6.013	4	2-11/16	2-25/32	2-1/2	0	4-1/8	1-13/16	3.5	6.5
16	H100Q16	Q1	7.03	6.408	4	2-11/16	2-25/32	2-1/2	0	4-1/8	1-13/16	3.5	7.4
17	H100Q17	Q1	7.44	6.803	4	2-11/16	2-25/32	2-1/2	0	4-1/8	1-13/16	3.5	8.2
18	H100Q18	Q1	7.84	7.199	4	2-11/16	2-25/32	2-1/2	0	4-1/8	1-13/16	3.5	9.0
19	H100Q19	Q1	8.24	7.595	4	2-11/16	2-25/32	2-1/2	0	4-1/8	1-13/16	3.5	9.9
20	H100Q20	Q1	8.64	7.990	4	2-11/16	2-25/32	2-1/2	0	4-1/8	1-13/16	3.5	10.8
21	H100Q21	Q1	9.04	8.388	4	2-11/16	2-25/32	2-1/2	0	4-1/8	1-13/16	3.5	11.7
21	H100R21	R1	9.04	8.388	4	3-3/4	3-5/32	2-7/8	0	5-3/8	2-3/16	7.5	13.3
22	H100Q22	Q1	9.44	8.784	4	2-11/16	2-25/32	2-1/2	0	4-1/8	1-13/16	3.5	12.5
23	H100Q23	Q1	9.85	9.180	4	2-11/16	2-25/32	2-1/2	0	4-1/8	1-13/16	3.5	13.9
24	H100Q24	Q1	10.25	9.576	4	2-11/16	2-25/32	2-1/2	0	4-1/8	1-13/16	3.5	15.5
24	H100R24	R1	10.25	9.576	4	3-3/4	3-5/32	2-7/8	0	5-3/8	2-3/16	7.5	16.1
25	H100Q25	Q1	10.65	9.974	4	2-11/16	2-25/32	2-1/2	0	4-1/8	1-13/16	3.5	16.2
25	H100R25	R1	10.65	9.974	4	3-3/4	3-5/32	2-7/8	0	5-3/8	2-3/16	7.5	17.0
26	H100Q26	Q1	11.05	10.370	4	2-11/16	2-25/32	2-1/2	0	4-1/8	1-13/16	3.5	17.9
26	H100R26	R1	11.05	10.370	4	3-3/4	3-5/32	2-7/8	0	5-3/8	2-3/16	7.5	18.5

Sprockets with "H" prefix have hardened teeth.

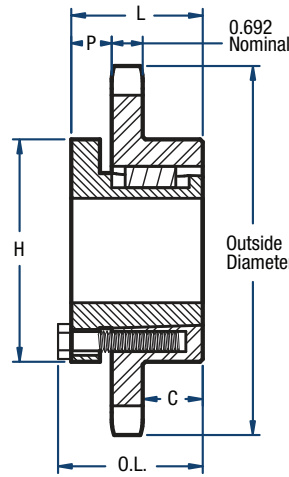
**NOTE:** Maximum bores shown will accommodate a standard keyseat and a setscrew over the keyseat. Slightly larger bores are possible with no keyseat, a shallow keyseat, or a setscrew at an angle to the keyseat.

# 100 Sprockets

## 1 1/4" Pitch



**TYPE 4**



**TYPE 5**

### Single-Split Taper Style (continued)

No. of Teeth	Catalog Number	Bushing	Diameters (in)		Type	Max. Bore	Dimensions (in)					Approx. Weight (lbs)	
			Outside	Pitch			OL	L	C	H	P	Bushing Only	Sprocket Only
27	H100Q27	Q1	11.45	10.768	4	2-11/16	2-25/32	2-1/2	0	4-1/8	1-13/16	3.5	18.2
	H100R27	R1	11.45	10.768	4	3-3/4	3-5/32	2-7/8	0	5-3/8	2-3/16	7.5	19.6
28	H100Q28	Q1	11.84	11.164	4	2-11/16	2-25/32	2-1/2	0	4-1/8	1-13/16	3.5	19.9
	H100R28	R1	11.84	11.164	4	3-3/4	3-5/32	2-7/8	0	5-3/8	2-3/16	7.5	21.0
30	H100Q30	Q1	12.64	11.959	4	2-11/16	2-25/32	2-1/2	0	4-1/8	1-13/16	3.5	22.6
	H100R30	R1	12.64	11.959	4	3-3/4	3-5/32	2-7/8	0	5-3/8	2-3/16	7.5	24.5
32	100Q32	Q1	13.44	12.753	4	2-11/16	2-25/32	2-1/2	0	4-1/8	1-13/16	3.5	25.3
	100R32	R1	13.44	12.753	4	3-3/4	3-5/32	2-7/8	0	5-3/8	2-3/16	7.5	26.5
35	100Q35	Q1	14.64	13.945	4	2-11/16	2-25/32	2-1/2	0	4-1/8	1-13/16	3.5	30.2
	100R35	R1	14.64	13.945	4	3-3/4	3-5/32	2-7/8	0	5-3/8	2-3/16	7.5	29.8
36	100R36	R1	15.04	14.343	4	3-3/4	3-5/32	2-7/8	0	5-3/8	2-3/16	7.5	33.0
40	100R40	R1	16.63	15.933	4	3-3/4	3-5/32	2-7/8	0	5-3/8	2-3/16	7.5	40.9
42	100R42	R1	17.43	16.728	4	3-3/4	3-5/32	2-7/8	0	5-3/8	2-3/16	7.5	44.3
45	100R45	R1	18.63	17.920	4	3-3/4	3-5/32	2-7/8	0	5-3/8	2-3/16	7.5	50.5
48	100R48	R1	19.82	19.113	4	3-3/4	3-5/32	2-7/8	0	5-3/8	2-3/16	7.5	57.5
54	100R54	R1	22.21	21.498	5	3-3/4	3-5/32	2-7/8	1-5/16	5-3/8	7/8	7.5	69.0
60	100R60	R1	24.60	23.884	5	3-3/4	3-5/32	2-7/8	1-5/16	5-3/8	7/8	7.5	84.0
70	100R70	R1	28.58	27.861	5	3-3/4	3-5/32	2-7/8	1-5/16	5-3/8	7/8	7.5	104.0
72	100R72	R1	29.38	28.658	5	3-3/4	3-5/32	2-7/8	1-5/16	5-3/8	7/8	7.5	106.0
80	100R80	R1	32.57	31.839	5	3-3/4	3-5/32	2-7/8	1-5/16	5-3/8	7/8	7.5	135.0
84	100R84	R1	34.16	33.430	5	3-3/4	3-5/32	2-7/8	1-5/16	5-3/8	7/8	7.5	138.0

Sprockets with "H" prefix have hardened teeth.

**NOTE:** Maximum bores shown will accommodate a standard keyseat and a setscrew over the keyseat. Slightly larger bores are possible with no keyseat, a shallow keyseat, or a setscrew at an angle to the keyseat.