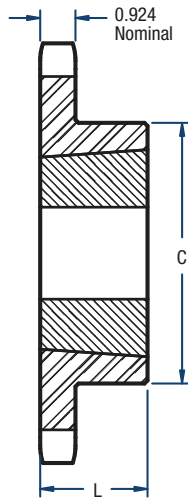
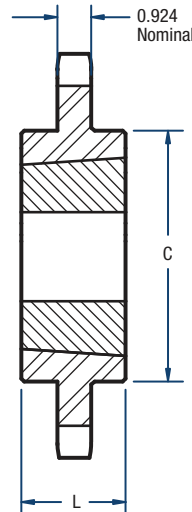


120 Sprockets

1 1/2" Pitch



TL - TYPE B



TL - TYPE C

Single- TL Style

No. of Teeth	Catalog Number	Bushing	Diameters (in)		Type	Max. Bore	Dimensions (in)		Approx. Weight (lbs)	
			Outside	Pitch			L	C	Bushing Only	Sprocket Only
12	H120BTL12	2012	6.50	5.796	B	2	1-1/4	3-9/16	1.4	5.5
13	H120BTL13	2517	6.99	6.269	B	2-1/2	1-3/4	4-1/4	3.0	6.0
14	H120BTL14	2517	7.47	6.741	B	2-1/2	1-3/4	4-1/4	3.0	7.0
15	H120BTL15	2517	7.96	7.215	B	2-1/2	1-3/4	4-1/4	3.0	8.0
16	H120BTL16	3020	8.44	7.689	B	3	2	5-1/4	5.4	10.0
17	H120BTL17	3020	8.92	8.163	B	3	2	5-1/4	5.4	11.0
18	H120BTL18	3020	9.41	8.639	B	3	2	5-1/4	5.4	12.0
19	H120BTL19	3020	9.89	9.114	B	3	2	5-1/4	5.4	14.0
20	H120BTL20	3020	10.37	9.588	B	3	2	5-1/4	5.4	15.5
21	H120BTL21	3020	10.85	10.065	B	3	2	5-1/4	5.4	17.5
24	H120BTL24	3020	12.29	11.492	B	3	2	5-1/4	5.4	23.5
26	H120BTL26	3020	13.25	12.444	B	3	2	5-1/4	5.4	28.5
30	H120BTL30	3020	15.17	14.351	B	3	2	5-1/4	5.4	33.5
35	120CTL35	3020	17.57	16.734	C	3	2	5-1/4	5.4	52.0
45	120CTL45	3030	22.35	21.504	C	3	3	5-7/8	7.5	82.0
60	120CTL60	3535	29.52	28.661	C	3-1/2	3-1/2	6-1/2	12.0	140.0
70	120CTL70	3535	34.30	33.434	C	3-1/2	3-1/2	6-1/2	12.0	175.0
80	120CTL80	3535	39.08	38.207	C	3-1/2	3-1/2	6-1/2	12.0	220.0

NOTE: Maximum bores shown will accommodate a standard keyseat and a setscrew over the keyseat. Slightly larger bores are possible with no keyseat, a shallow keyseat, or a setscrew at an angle to the keyseat.