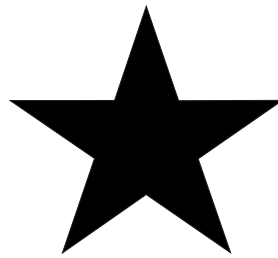
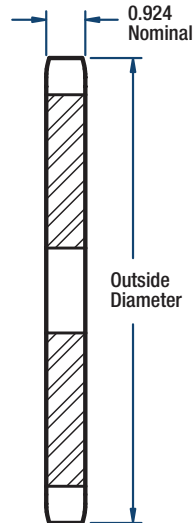


140 Sprockets

1 3/4" Pitch



BLACKSTAR®



TYPE A

Single- Type A

No. of Teeth	Catalog Number	Diameters (in)		Stock Bore (in)	Approx. Weight (lbs)
		Outside	Pitch		
11	H140A11	7.01	6.213	1-1/2	5.0
12	H140A12	7.58	6.762	1-1/2	7.8
13	H140A13	8.15	7.313	1-1/2	8.2
14	H140A14	8.72	7.865	1-1/2	10.0
15	H140A15	9.28	8.418	1-1/2	11.0
16	H140A16	9.85	8.971	1-1/2	14.0
17	H140A17	10.41	9.524	1-1/2	16.0
18	H140A18	10.97	10.078	1-1/2	18.0
19	H140A19	11.54	10.633	1-1/2	21.0
20	H140A20	12.10	11.186	1-1/2	23.0
21	140A21	12.66	11.743	1-1/2	25.0
22	140A22	13.22	12.297	1-1/2	28.0
23	140A23	13.78	12.852	1-1/2	30.0
24	140A24	14.34	13.407	1-1/2	33.0
25	140A25	14.90	13.963	1-1/2	34.0

No. of Teeth	Catalog Number	Diameters (in)		Stock Bore (in)	Approx. Weight (lbs)
		Outside	Pitch		
26	140A26	15.46	14.518	1-1/2	39.0
27	140A27	16.02	15.075	1-1/2	41.0
28	140A28	16.58	15.629	1-1/2	45.0
30	140A30	17.70	16.742	1-1/2	52.0
31	140A31	18.26	17.297	1-1/2	56.0
32	140A32	18.82	17.854	1-1/2	60.0
35	140A35	20.49	19.523	1-1/2	73.0
36	140A36	21.05	20.080	1-1/2	77.0
40	140A40	23.29	22.306	1-1/2	93.0
45	140A45	26.08	25.088	1-1/2	131.0
48	140A48	27.75	26.758	1-1/2	134.0
54	140A54	31.10	30.097	1-1/2	173.0
60	140A60	34.44	33.437	1-1/2	219.0
70	140A70	40.02	39.006	1-1/2	292.0
80	140A80	45.59	44.574	1-1/2	402.0

NOTE: Maximum bores shown will accommodate a standard keyseat and a setscrew over the keyseat. Slightly larger bores are possible with no keyseat, a shallow keyseat, or a setscrew at an angle to the keyseat.