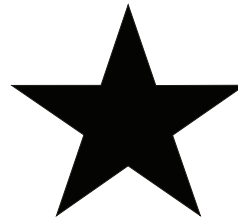
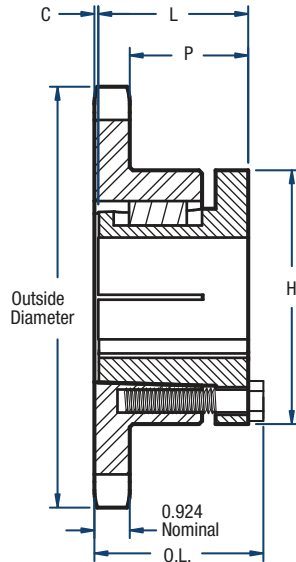


140 Sprockets

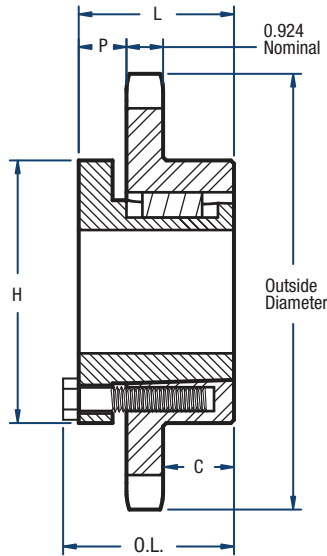
1 3/4" Pitch



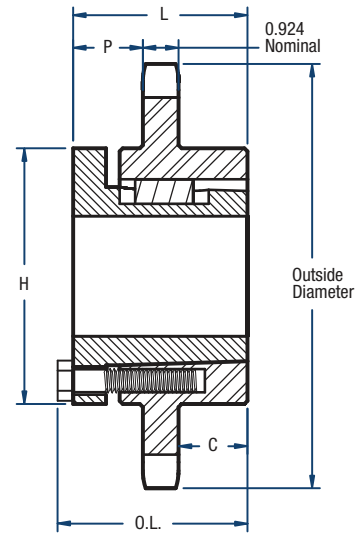
BLACKSTAR®



TYPE 4



TYPE 5



TYPE 6

Single-Split Taper Style

No. of Teeth	Catalog Number	Bushing	Diameters (in)		Type	Max. Bore	Dimensions (in)					Approx. Weight (lbs)	
			Outside	Pitch			OL	L	C	H	P	Bushing Only	Sprocket Only
11	H140Q11	Q1	7.01	6.213	4	2-11/16	2-25/32	2-1/2	0	4-1/8	1-9/16	3.5	6.4
12	H140Q12	Q1	7.58	6.762	4	2-11/16	2-25/32	2-1/2	0	4-1/8	1-9/16	3.5	9.0
13	H140R13	R1	8.15	7.313	4	3-3/4	3-5/32	2-7/8	0	5-3/8	1-15/16	7.5	11.1
14	H140R14	R1	8.72	7.865	4	3-3/4	3-5/32	2-7/8	0	5-3/8	1-15/16	7.5	12.6
15	H140R15	R1	9.28	8.418	4	3-3/4	3-5/32	2-7/8	0	5-3/8	1-15/16	7.5	14.7
16	H140R16	R1	9.85	8.971	4	3-3/4	3-5/32	2-7/8	0	5-3/8	1-15/16	7.5	16.5
17	H140R17	R1	10.41	9.524	4	3-3/4	3-5/32	2-7/8	0	5-3/8	1-15/16	7.5	18.5
18	H140R18	R1	10.97	10.078	4	3-3/4	3-5/32	2-7/8	0	5-3/8	1-15/16	7.5	20.5
19	H140R19	R1	11.54	10.633	4	3-3/4	3-5/32	2-7/8	0	5-3/8	1-15/16	7.5	23.0
20	H140R20	R1	12.10	11.186	4	3-3/4	3-5/32	2-7/8	0	5-3/8	1-15/16	7.5	25.4
21	H140R21	R1	12.66	11.743	4	3-3/4	3-5/32	2-7/8	0	5-3/8	1-15/16	7.5	27.8
22	H140R22	R1	13.22	12.297	5	3-3/4	3-5/32	2-7/8	1-1/16	5-3/8	7/8	7.5	32.5
23	H140R23	R1	13.78	12.852	5	3-3/4	3-5/32	2-7/8	1-1/16	5-3/8	7/8	7.5	36.0
24	H140R24	R1	14.34	13.407	5	3-3/4	3-5/32	2-7/8	1-1/16	5-3/8	7/8	7.5	37.6
25	H140R25	R1	14.90	13.963	5	3-3/4	3-5/32	2-7/8	1-1/16	5-3/8	7/8	7.5	40.3
26	H140R26	R1	15.46	14.518	5	3-3/4	3-5/32	2-7/8	1-1/16	5-3/8	7/8	7.5	44.0
30	H140R30	R2	17.70	16.742	6	3-5/8	5-5/32	4-7/8	2	5-3/8	7/8	11.0	68.0
35	140R35	R2	20.49	19.523	6	3-5/8	5-5/32	4-7/8	2	5-3/8	7/8	11.0	88.0
36	140R36	R2	21.05	20.080	6	3-5/8	5-5/32	4-7/8	2	5-3/8	7/8	11.0	90.0
36	140S36	S1	21.05	20.080	5	4-1/4	4-3/4	4-3/8	2-3/8	6-3/8	1-1/16	13.5	89.0
40	140R40	R2	23.29	22.306	6	3-5/8	5-5/32	4-7/8	2	5-3/8	7/8	11.0	109.0
40	140S40	S1	23.29	22.306	5	4-1/4	4-3/4	4-3/8	2-3/8	6-3/8	1-1/16	13.5	107.0
45	140S45	S1	26.08	25.088	5	4-1/4	4-3/4	4-3/8	2-3/8	6-3/8	1-1/16	13.5	132.0
48	140S48	S2	27.75	26.758	6	4-3/16	7-1/2	6-3/4	2-7/8	6-3/8	2-15/16	19.0	169.0
54	140S54	S2	31.10	30.097	6	4-3/16	7-1/2	6-3/4	2-7/8	6-3/8	2-15/16	19.0	208.0
60	140S60	S2	34.44	33.437	6	4-3/16	7-1/2	6-3/4	2-7/8	6-3/8	2-15/16	19.0	230.0
70	140S70	S2	40.02	39.006	6	4-3/16	7-1/2	6-3/4	2-7/8	6-3/8	2-15/16	19.0	311.0
80	140S80	S2	45.59	44.574	6	4-3/16	7-1/2	6-3/4	2-7/8	6-3/8	2-15/16	19.0	242.0

NOTE: Maximum bores shown will accommodate a standard keyseat and a setscrew over the keyseat. Slightly larger bores are possible with no keyseat, a shallow keyseat, or a setscrew at an angle to the keyseat.