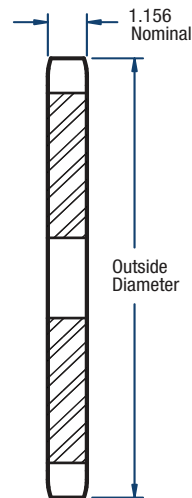
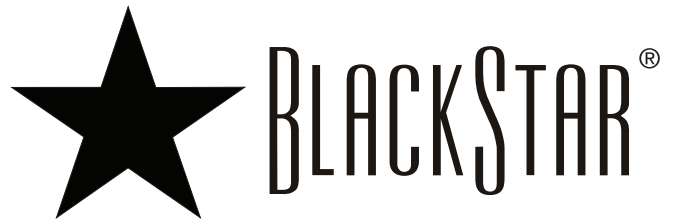


160 Sprockets

2" Pitch



TYPE A

Single- Type A

No. of Teeth	Catalog Number	Diameters (in)		Stock Bore (in)	Approx. Weight (lbs)
		Outside	Pitch		
8	H160A8	6.03	5.226	1-1/2	5.00
9	H160A9	6.70	5.848	1-1/2	7.00
10	H160A10	7.36	6.472	1-1/2	8.00
11	H160A11	8.01	7.100	1-1/2	10.00
12	H160A12	8.66	7.728	1-1/2	12.00
13	H160A13	9.31	8.358	1-1/2	16.00
14	H160A14	9.96	8.988	1-1/2	17.00
15	H160A15	10.61	9.620	1-1/2	21.00
16	H160A16	11.25	10.252	1-1/2	24.00
17	H160A17	11.90	10.844	1-1/2	27.00
18	H160A18	12.54	11.518	1-1/2	30.00
19	H160A19	13.19	12.152	1-1/2	34.00
20	H160A20	13.83	12.784	1-1/2	38.00
21	H160A21	14.47	13.420	1-1/2	42.00
22	H160A22	15.11	14.054	1-1/2	46.00

No. of Teeth	Catalog Number	Diameters (in)		Stock Bore (in)	Approx. Weight (lbs)
		Outside	Pitch		
23	H160A23	15.75	14.688	1-1/2	50.00
24	H160A24	16.39	15.322	1-1/2	56.00
25	H160A25	17.03	15.958	1-1/2	61.00
26	H160A26	17.67	16.592	1-1/2	65.00
27	H160A27	18.31	17.228	1-1/2	71.00
28	H160A28	18.95	17.862	1-1/2	77.00
30	H160A30	20.23	19.134	1-1/2	90.00
35	160A35	23.42	22.312	1-1/2	121.00
40	160A40	26.61	25.492	1-1/2	138.00
45	160A45	29.80	28.672	1-1/2	204.00
54	160A54	35.54	34.396	1-1/2	294.00
60	160A60	39.36	38.214	1-1/2	366.00
70	160A70	45.73	44.578	1-1/2	507.00
80	160A80	52.10	50.942	1-1/2	656.00