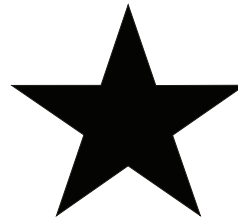
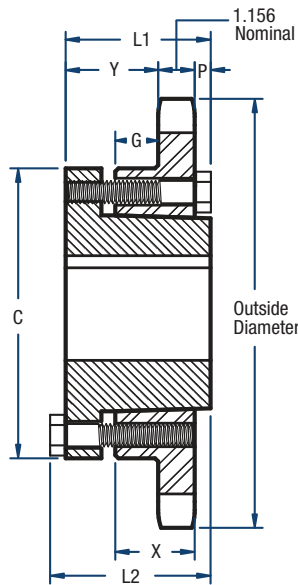


160 Sprockets

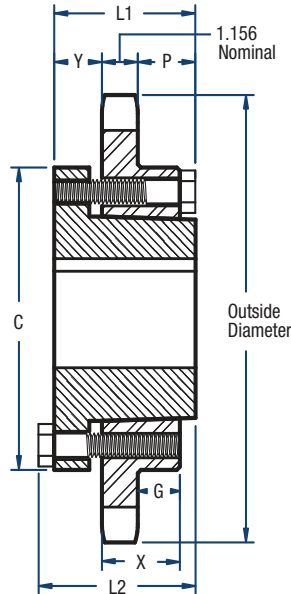
2" Pitch



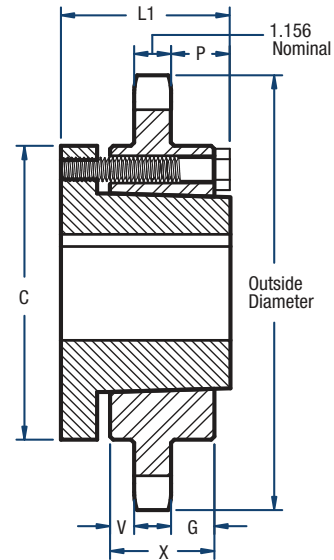
BLACKSTAR®



TYPE B1



TYPE C



TYPE C1

Single- QD Style

No. of Teeth	Catalog Number	Bushing	Diameters (in)		Type	Max. Bore	Dimensions (in)								Approx. Weight (lbs)	
			Outside	Pitch			L1	L2	C	Y	P	G	V	X	Bushing Only	Sprocket Only
12	H160E12	E	8.66	7.728	B1	3-1/2	2-5/8	2-15/16	6	1-5/16	1/8	15/32	—	1-5/8	10.0	11.0
13	H160E13	E	9.31	8.358	B1	3-1/2	2-5/8	2-15/16	6	1-5/16	1/8	15/32	—	1-5/8	10.0	14.0
14	H160E14	E	9.96	8.988	B1	3-1/2	2-5/8	2-15/16	6	1-5/16	1/8	15/32	—	1-5/8	10.0	16.0
15	H160F15	F	10.61	9.620	B1	3-15/16	3-5/8	4	6-5/8	2-5/16	1/8	1-11/32	—	2-1/2	11.5	24.0
16	H160F16	F	11.25	10.252	B1	3-15/16	3-5/8	4	6-5/8	2-5/16	1/8	1-11/32	—	2-1/2	11.5	27.0
17	H160F17	F	11.90	10.844	B1	3-15/16	3-5/8	4	6-5/8	2-5/16	1/8	1-11/32	—	2-1/2	11.5	31.0
18	H160F18	F	12.54	11.518	B1	3-15/16	3-5/8	4	6-5/8	2-5/16	1/8	1-11/32	—	2-1/2	11.5	35.0
19	H160F19	F	13.19	12.152	B1	3-15/16	3-5/8	4	6-5/8	2-5/16	1/8	1-11/32	—	2-1/2	11.5	38.0
20	H160F20	F	13.83	12.784	B1	3-15/16	3-5/8	4	6-5/8	2-5/16	1/8	1-11/32	—	2-1/2	11.5	42.0
21	H160F21	F	14.47	13.420	B1	3-15/16	3-5/8	4	6-5/8	2-5/16	1/8	1-11/32	—	2-1/2	11.5	45.0
22	H160F22	F	15.11	14.054	B1	3-15/16	3-5/8	4	6-5/8	2-5/16	1/8	1-11/32	—	2-1/2	11.5	51.0
23	H160F23	F	15.75	14.688	B1	3-15/16	3-5/8	4	6-5/8	2-5/16	1/8	1-11/32	—	2-1/2	11.5	55.0
24	H160F24	F	16.39	15.322	B1	3-15/16	3-5/8	4	6-5/8	2-5/16	1/8	1-11/32	—	2-1/2	11.5	59.0
25	H160F25	F	17.03	15.958	B1	3-15/16	3-5/8	4	6-5/8	2-5/16	1/8	1-11/32	—	2-1/2	11.5	64.0
26	H160J26	J	17.67	16.592	C	4-7/16	4-1/2	5	7-1/4	1-3/16	2-1/8	2-1/32	—	3-3/16	18.0	74.0
28	H160J28	J	18.95	17.862	C	4-7/16	4-1/2	5	7-1/4	1-3/16	2-1/8	2-1/32	—	3-3/16	18.0	84.0
30	H160J30	J	20.23	19.134	C	4-7/16	4-1/2	5	7-1/4	1-3/16	2-1/8	2-1/32	—	3-3/16	18.0	96.0
35	160J35	J	23.42	22.312	C	4-7/16	4-1/2	5	7-1/4	1-3/16	2-1/8	2-1/32	—	3-3/16	18.0	116.0
40	160M40	M	26.61	25.492	C1	5-1/2	6-3/4	6-3/4	9	2-11/16	2-11/16	2-13/32	1-19/32	5-3/16	37.0	174.0
45	160M45	M	29.80	28.672	C1	5-1/2	6-3/4	6-3/4	9	2-11/16	2-11/16	2-13/32	1-19/32	5-3/16	37.0	208.0
54	160M54	M	35.54	34.396	C1	5-1/2	6-3/4	6-3/4	9	2-11/16	2-11/16	2-13/32	1-19/32	5-3/16	37.0	262.0
60	160M60	M	39.36	38.214	C1	5-1/2	6-3/4	6-3/4	9	2-11/16	2-11/16	2-13/32	1-19/32	5-3/16	37.0	310.0
70	160M70	M	45.73	44.578	C1	5-1/2	6-3/4	6-3/4	9	2-11/16	2-11/16	2-13/32	1-19/32	5-3/16	37.0	431.0
80	160M80	M	52.10	50.942	C1	5-1/2	6-3/4	6-3/4	9	2-11/16	2-11/16	2-13/32	1-19/32	5-3/16	37.0	530.0

NOTE: Maximum bores shown will accommodate a standard keyseat and a setscrew over the keyseat. Slightly larger bores are possible with no keyseat, a shallow keyseat, or a setscrew at an angle to the keyseat.