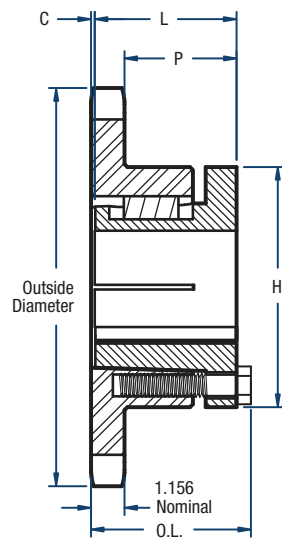
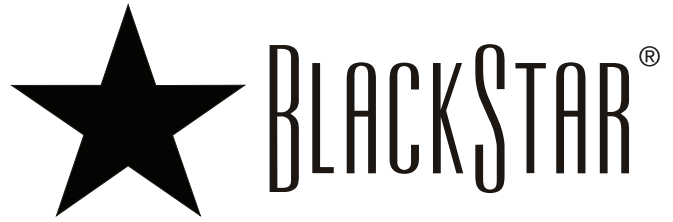
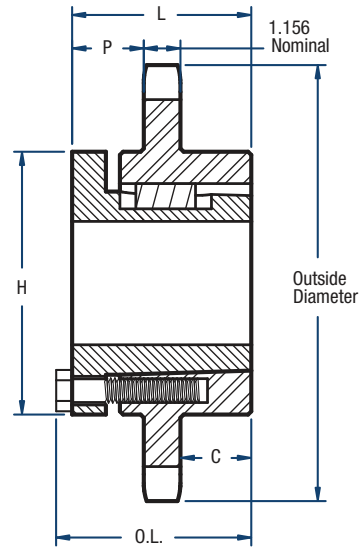


160 Sprockets

2" Pitch



TYPE 4



TYPE 6

Single-Split Taper Style

No. of Teeth	Catalog Number	Bushing	Diameters (in)		Type	Max. Bore	Dimensions (in)					Approx. Weight (lbs)	
			Outside	Pitch			OL	L	C	H	P	Bushing Only	Sprocket Only
11	H160R11	R1	8.01	7.100	4	3-3/4	3-13/32	2-7/8	1/4	5-3/8	1-31/32	7.5	10.8
12	H160R12	R1	8.66	7.728	4	3-3/4	3-13/32	2-7/8	1/4	5-3/8	1-31/32	7.5	14.2
13	H160R13	R1	9.31	8.358	4	3-3/4	3-5/32	2-7/8	0	5-3/8	1-23/32	7.5	15.5
14	H160R14	R1	9.96	8.988	4	3-3/4	3-5/32	2-7/8	0	5-3/8	1-23/32	7.5	18.5
15	H160R15	R1	10.61	9.620	4	3-3/4	3-5/32	2-7/8	0	5-3/8	1-23/32	7.5	21.6
16	H160R16	R1	11.25	10.252	4	3-3/4	3-5/32	2-7/8	0	5-3/8	1-23/32	7.5	25.0
17	H160R17	R1	11.90	10.844	4	3-3/4	3-5/32	2-7/8	0	5-3/8	1-23/32	7.5	28.0
18	H160R18	R1	12.54	11.518	4	3-3/4	3-5/32	2-7/8	0	5-3/8	1-23/32	7.5	31.9
19	H160R19	R1	13.19	12.152	4	3-3/4	3-5/32	2-7/8	0	5-3/8	1-23/32	7.5	35.9
20	H160R20	R2	13.83	12.784	6	3-5/8	5-5/32	4-7/8	2	5-3/8	1-23/32	11.0	51.0
21	H160R21	R2	14.47	13.420	6	3-5/8	5-5/32	4-7/8	2	5-3/8	1-23/32	11.0	56.0
22	H160R22	R2	15.11	14.054	6	3-5/8	5-5/32	4-7/8	2	5-3/8	1-23/32	11.0	60.0
23	H160R23	R2	15.75	14.688	6	3-5/8	5-5/32	4-7/8	2	5-3/8	1-23/32	11.0	65.0
24	H160R24	R2	16.39	15.322	6	3-5/8	5-5/32	4-7/8	2	5-3/8	1-23/32	11.0	71.5
25	H160R25	R2	17.03	15.958	6	3-5/8	5-5/32	4-7/8	2	5-3/8	1-23/32	11.0	74.0
26	H160R26	R2	17.67	16.592	6	3-5/8	5-5/32	4-7/8	2	5-3/8	1-23/32	11.0	79.0
26	H160S26	S2	17.67	16.592	6	4-3/16	7-1/8	6-3/4	2-7/8	6-3/8	2-23/32	19.0	79.0
28	H160R28	R2	18.95	17.862	6	3-5/8	5-5/32	4-7/8	2	5-3/8	1-23/32	11.0	99.8
28	H160S28	S2	18.95	17.862	6	4-3/16	7-1/8	6-3/4	2-7/8	6-3/8	2-23/32	19.0	99.8
30	H160R30	R2	20.23	19.134	6	3-5/8	5-5/32	4-7/8	2	5-3/8	1-23/32	11.0	106.0
30	H160S30	S2	20.23	19.134	6	4-3/16	7-1/8	6-3/4	2-7/8	6-3/8	2-23/32	19.0	115.0
35	160S35	S2	23.42	22.312	6	4-3/16	7-1/8	6-3/4	2-7/8	6-3/8	2-23/32	19.0	150.0
40	160S40	S2	26.61	25.492	6	4-3/16	7-1/8	6-3/4	2-7/8	6-3/8	2-23/32	19.0	165.0
45	160S45	S2	29.80	28.672	6	4-3/16	7-1/8	6-3/4	2-7/8	6-3/8	2-23/32	19.0	204.0
60	160U60	U0	39.36	38.214	6	5-1/2	5-25/32	5-1/4	1-15/16	8-3/8	1-21/32	30.0	308.0
70	160U70	U0	45.73	44.578	6	5-1/2	5-25/32	5-1/4	1-15/16	8-3/8	1-21/32	30.0	354.0
80	160S80	S2	52.10	50.942	6	4-3/16	7-1/8	6-3/4	2-7/8	6-3/8	2-23/32	19.0	414.0
80	160U80	U1	52.10	50.942	6	5-1/2	7-19/32	7-1/8	2-7/8	8-3/8	2-19/32	40.0	394.0

NOTE: Maximum bores shown will accommodate a standard keyseat and a setscrew over the keyseat. Slightly larger bores are possible with no keyseat, a shallow keyseat, or a setscrew at an angle to the keyseat.