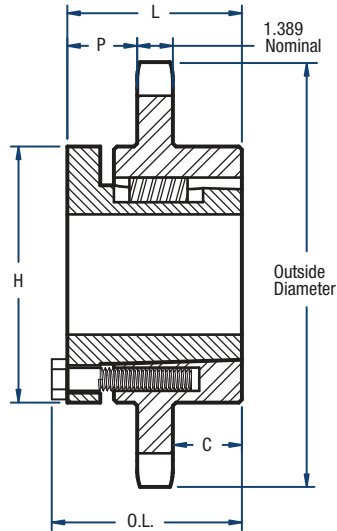


200 Sprockets

2 1/2" Pitch



BLACKSTAR®



TYPE 6

Single-Split Taper Style

No. of Teeth	Catalog Number	Bushing	Diameters (in)		Type	Max. Bore	Dimensions (in)					Approx. Weight (lbs)	
			Outside	Pitch			OL	L	C	H	P	Bushing Only	Sprocket Only
12	H200R12	R2	10.83	9.660	6	3-5/8	5-5/32	4-7/8	2	5-3/8	1-1/2	11.0	35.3
13	H200S13	S2	11.64	10.447	6	4-3/16	7-1/8	6-3/4	2-7/8	6-3/8	2-1/2	19.0	52.2
14	H200S14	S2	12.46	11.235	6	4-3/16	7-1/8	6-3/4	2-7/8	6-3/8	2-1/2	19.0	57.5
15	H200S15	S2	13.26	12.025	6	4-3/16	7-1/8	6-3/4	2-7/8	6-3/8	2-1/2	19.0	61.0
16	H200S16	S2	14.07	12.815	6	4-3/16	7-1/8	6-3/4	2-7/8	6-3/8	2-1/2	19.0	71.0
17	H200S17	S2	14.87	13.605	6	4-3/16	7-1/8	6-3/4	2-7/8	6-3/8	2-1/2	19.0	79.0
18	H200U18	U0	15.68	14.397	6	5-1/2	5-23/32	5-1/4	1-5/8	8-3/8	2-17/32	30.0	76.5
19	H200U19	U0	16.48	15.190	6	5-1/2	5-23/32	5-1/4	1-5/8	8-3/8	2-17/32	30.0	83.7
20	H200U20	U0	17.29	15.980	6	5-1/2	5-23/32	5-1/4	1-5/8	8-3/8	2-17/32	30.0	91.3
21	H200U21	U0	18.09	16.775	6	5-1/2	5-23/32	5-1/4	1-5/8	8-3/8	2-17/32	30.0	99.4
22	H200U22	U0	18.89	17.567	6	5-1/2	5-23/32	5-1/4	1-5/8	8-3/8	2-17/32	30.0	110.0
23	H200U23	U0	19.69	18.360	6	5-1/2	5-23/32	5-1/4	1-5/8	8-3/8	2-17/32	30.0	117.0
24	H200U24	U0	20.49	19.153	6	5-1/2	5-23/32	5-1/4	1-5/8	8-3/8	2-17/32	30.0	126.0
25	H200U25	U0	21.29	19.947	6	5-1/2	5-23/32	5-1/4	1-5/8	8-3/8	2-17/32	30.0	140.0
26	H200U26	U0	22.09	20.740	6	5-1/2	5-23/32	5-1/4	1-5/8	8-3/8	2-17/32	30.0	150.0
28	H200U28	U0	23.69	22.330	6	5-1/2	5-23/32	5-1/4	1-5/8	8-3/8	2-17/32	30.0	169.0
30	H200U30	U0	25.29	23.917	6	5-1/2	5-23/32	5-1/4	1-5/8	8-3/8	2-17/32	30.0	188.0
32	200U32	U0	26.88	25.505	6	5-1/2	5-23/32	5-1/4	1-5/8	8-3/8	2-17/32	30.0	212.0
35	200U35	U1	29.28	27.890	6	5-1/2	7-19/32	7-1/8	2-7/8	8-3/8	2-7/8	40.0	252.0
40	200U40	U1	33.27	31.865	6	5-1/2	7-19/32	7-1/8	2-7/8	8-3/8	2-7/8	40.0	306.0
45	200U45	U1	37.25	35.840	6	5-1/2	7-19/32	7-1/8	2-7/8	8-3/8	2-7/8	40.0	290.0
54	200U54	U2	44.42	42.995	6	5	10-19/32	10-1/8	4-1/4	8-3/8	3-29/32	50.0	385.0
60	200U60	U2	49.20	47.768	6	5	10-19/32	10-1/8	4-1/4	8-3/8	3-29/32	50.0	445.0

NOTE: Maximum bores shown will accommodate a standard keyseat and a setscrew over the keyseat. Slightly larger bores are possible with no keyseat, a shallow keyseat, or a setscrew at an angle to the keyseat.