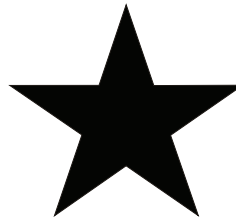


35 Sprockets

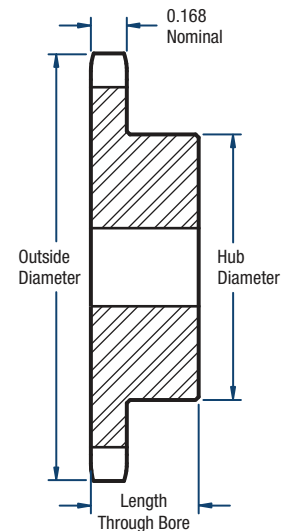
3/8" Pitch



BLACKSTAR®

Single- Type B

No. of Teeth	Catalog Number	Diameters (in)		Bore (in)		Hub (in)		Approx. Weight (lbs)
		Outside	Pitch	Min.	Max.	Dia.	Length Through Bore	
8	H35B8	1.13	0.980	3/8	3/8	3/4*	3/4	0.07
9	H35B9	1.26	1.097	3/8	3/8	27/32*	3/4	0.09
10	H35B10	1.38	1.214	3/8	9/16	31/32*	3/4	0.14
11	H35B11	1.50	1.331	3/8	9/16	1-1/16*	3/4	0.17
12	H35B12	1.63	1.449	1/2	9/16	1-7/32*	3/4	0.20
13	H35B13	1.75	1.567	1/2	11/16	1-1/4*	3/4	0.23
14	H35B14	1.87	1.685	1/2	7/8	1-1/4	3/4	0.25
15	H35B15	1.99	1.804	1/2	7/8	1-11/32	3/4	0.29
16	H35B16	2.11	1.922	1/2	15/16	1-15/32	3/4	0.35
17	H35B17	2.23	2.041	1/2	1-1/16	1-19/32	3/4	0.42
18	H35B18	2.35	2.160	1/2	1-3/16	1-23/32	3/4	0.48
19	H35B19	2.47	2.279	1/2	1-1/4	1-27/32	3/4	0.54
20	H35B20	2.59	2.397	1/2	1-5/16	1-15/16	3/4	0.59
21	H35B21	2.71	2.516	1/2	1-3/8	2	7/8	0.80
22	H35B22	2.83	2.635	1/2	1-3/8	2	7/8	0.80
23	H35B23	2.95	2.754	1/2	1-3/8	2	7/8	0.82
24	H35B24	3.07	2.873	1/2	1-3/8	2	7/8	0.88
25	H35B25	3.19	2.992	1/2	1-3/8	2	7/8	0.88
26	H35B26	3.31	3.111	1/2	1-3/8	2	7/8	0.90
27	H35B27	3.43	3.230	1/2	1-3/8	2	7/8	0.94
28	H35B28	3.55	3.349	1/2	1-3/8	2	7/8	0.94
30	H35B30	3.79	3.588	1/2	1 3/8	2	7/8	1.02
32	35B32	4.03	3.826	1/2	1-3/8	2	7/8	1.24
35	35B35	4.39	4.184	5/8	1-1/2	2-1/4	7/8	1.50
36	35B36	4.51	4.303	5/8	1-1/2	2-1/4	7/8	1.56
40	35B40	4.99	4.780	5/8	1-1/2	2-1/4	1	1.62
42	35B42	5.23	5.018	5/8	1-1/2	2-1/4	1	1.68
45	35B45	5.59	5.376	5/8	1-1/2	2-1/4	1	1.78
48	35B48	5.95	5.734	5/8	1-1/2	2-1/4	1	1.88
54	35B54	6.66	6.449	5/8	1-1/2	2-1/4	1	2.20
60	35B60	7.38	7.165	3/4	1-1/2	2-1/4	1	2.48
70	35B70	8.58	8.358	3/4	1-1/2	2-1/4	1	3.12
72	35B72	8.81	8.597	3/4	1-1/2	2-1/4	1	3.42
80	35B80	9.77	9.552	3/4	1-1/2	2-1/4	1	3.82
84	35B84	10.25	10.029	3/4	1-1/2	2-1/4	1	4.24
96	35B96	11.68	11.461	3/4	1-1/2	2-1/4	1	5.16
112	35B112	13.59	13.371	3/4	1-1/2	2-1/4	1	6.70



TYPE B

*Has a recessed groove in the hub for chain clearance.
Sprockets with "H" prefix have hardened teeth.

NOTE: Maximum bores shown will accommodate a standard keyseat and a setscrew over the keyseat. Slightly larger bores are possible with no keyseat, a shallow keyseat, or a setscrew at an angle to the keyseat.