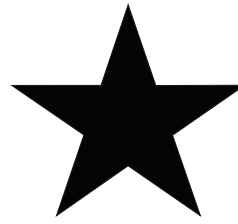
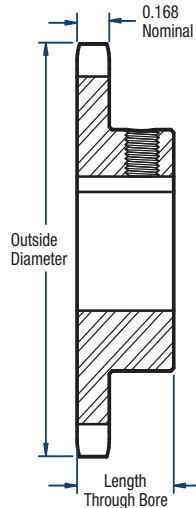


35 Sprockets

3/8" Pitch



BLACKSTAR®



Single-Bored to Size— Keyway and 2 Setscrews

No. of Teeth	Catalog Number	Diameters (in)		Length Through Bore (in)	Approx. Weight (lbs)	Stock Finished Bore Includes Keyway and 2 Setscrews												
		Outside	Pitch			Bore	Keyway	Keyway	Keyway	Keyway	Keyway	Keyway	Keyway	Keyway	Keyway	Keyway		
9	H35BS9	1.26	1.097	3/4	0.10	*3/8	—	—	—	—	—	—	—	—	—	—	—	—
10	H35BS10	1.38	1.214	3/4	0.11	*3/8	*1/2	**5/8	—	—	—	—	—	—	—	—	—	—
11	H35BS11	1.50	1.331	3/4	0.15	*3/8	*1/2	**5/8	**3/4	—	—	—	—	—	—	—	—	—
12	H35BS12	1.63	1.449	3/4	0.18	—	*1/2	5/8	**3/4	—	—	—	—	—	—	—	—	—
13	H35BS13	1.75	1.567	3/4	0.20	—	*1/2	5/8	3/4	—	—	—	—	—	—	—	—	—
14	H35BS14	1.87	1.685	3/4	0.22	—	*1/2	5/8	3/4	—	—	—	—	—	—	—	—	—
15	H35BS15	1.99	1.804	3/4	0.24	—	*1/2	5/8	3/4	7/8	1	—	—	—	—	—	—	—
16	H35BS16	2.11	1.922	3/4	0.29	—	*1/2	5/8	3/4	7/8	1	—	—	—	—	—	—	—
17	H35BS17	2.23	2.041	3/4	0.36	—	*1/2	5/8	3/4	7/8	1	—	—	—	—	—	—	—
18	H35BS18	2.35	2.160	3/4	0.39	—	*1/2	5/8	3/4	7/8	1	—	—	—	—	—	—	—
19	H35BS19	2.47	2.279	3/4	0.44	—	*1/2	5/8	3/4	—	1	—	—	—	—	—	—	—
20	H35BS20	2.59	2.397	3/4	0.51	—	*1/2	5/8	3/4	—	1	—	—	—	—	—	—	—
21	H35BS21	2.71	2.516	7/8	0.75	—	*1/2	5/8	3/4	—	1	—	—	—	—	—	—	—
22	H35BS22	2.83	2.635	7/8	0.78	—	*1/2	5/8	3/4	—	1	—	—	—	—	—	—	—
23	H35BS23	2.95	2.754	7/8	0.79	—	*1/2	5/8	3/4	—	1	—	—	—	—	—	—	—
24	H35BS24	3.07	2.873	7/8	0.80	—	*1/2	5/8	3/4	—	1	—	—	—	—	—	—	—
25	H35BS25	3.19	2.992	7/8	0.84	—	*1/2	5/8	3/4	—	1	—	—	—	—	—	—	—
26	H35BS26	3.31	3.111	7/8	0.88	—	—	5/8	3/4	7/8	1	1-1/8	1-3/16	1-1/4	—	—	—	—
27	H35BS27	3.43	3.230	7/8	0.94	—	—	5/8	3/4	7/8	1	1-1/8	1-3/16	1-1/4	—	—	—	—
28	H35BS28	3.55	3.349	7/8	0.94	—	—	5/8	3/4	7/8	1	1-1/8	1-3/16	1-1/4	—	—	—	—
30	H35BS30	3.79	3.588	7/8	0.96	—	—	5/8	3/4	7/8	1	1-1/8	1-3/16	1-1/4	—	—	—	—
32	35BS32	4.03	3.826	7/8	1.14	—	—	5/8	3/4	7/8	1	1-1/8	1-3/16	1-1/4	—	—	—	—
35	35BS35	4.39	4.184	1	1.38	—	—	5/8	3/4	7/8	1	1-1/8	1-3/16	1-1/4	—	—	—	—
36	35BS36	4.51	4.303	1	1.41	—	—	5/8	3/4	7/8	1	1-1/8	1-3/16	1-1/4	—	—	—	—
40	35BS40	4.99	4.780	1	1.56	—	—	5/8	3/4	7/8	1	1-1/8	1-3/16	1-1/4	—	—	—	—
42	35BS42	5.23	5.018	1	1.64	—	—	5/8	3/4	7/8	1	1-1/8	1-3/16	1-1/4	—	—	—	—
45	35BS45	5.59	5.376	1	1.74	—	—	5/8	3/4	7/8	1	1-1/8	1-3/16	1-1/4	—	—	—	—
48	35BS48	5.95	5.734	1	1.86	—	—	5/8	3/4	7/8	1	1-1/8	1-3/16	1-1/4	—	—	—	—
54	35BS54	6.66	6.449	1	1.98	—	—	5/8	3/4	7/8	1	1-1/8	1-3/16	1-1/4	—	—	—	—
60	35BS60	7.38	7.165	1	2.34	—	—	—	3/4	7/8	1	1-1/8	1-3/16	1-1/4	—	—	—	—
70	35BS70	8.58	8.358	1	3.14	—	—	—	3/4	7/8	1	1-1/8	1-3/16	1-1/4	—	—	—	—
72	35BS72	8.81	8.597	1	3.30	—	—	—	3/4	7/8	1	1-1/8	1-3/16	1-1/4	—	—	—	—
80	35BS80	9.77	9.552	1	3.94	—	—	—	3/4	7/8	1	1-1/8	1-3/16	1-1/4	—	—	—	—
84	35BS84	10.25	10.029	1	4.26	—	—	—	3/4	7/8	1	1-1/8	1-3/16	1-1/4	—	—	—	—
96	35BS96	11.68	11.461	1	5.22	—	—	—	3/4	7/8	1	1-1/8	1-3/16	1-1/4	—	—	—	—
112	35BS112	13.59	13.371	1	6.50	—	—	—	3/4	7/8	1	1-1/8	1-3/16	1-1/4	—	—	—	—

*Indicates no keyway and (2) 1/4" setscrews only.

NOTE: Keyway is on center line of tooth.

**Keyway with only one setscrew at 90 degrees.

Hub diameters may vary to suit different bore sizes.

Sprockets with "H" prefix have hardened teeth.