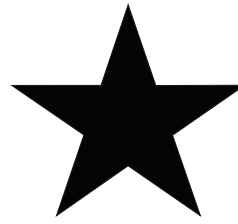
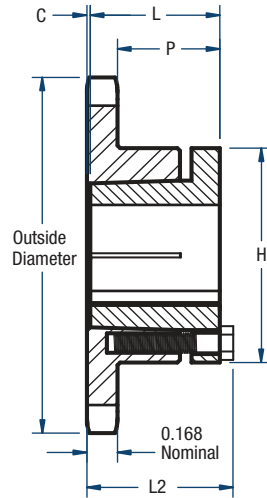


# 35 Sprockets

## 3/8" Pitch



# BLACKSTAR®



**TYPE 3**

### Single- Split Taper Style

No. of Teeth	Catalog Number	Bushing	Diameters (in)		Type	Max. Bore	Dimensions (in)					Approx. Weight (lbs)	
			Outside Diameter	Pitch Diameter			L2	L	C	H	P	Bushing Only	Sprocket Only
19	H35H19	H	2.47	2.279	3	1-1/2	1-1/2	1-1/4	1/16	2-1/2	1-5/32	0.8	0.5
20	H35H20	H	2.59	2.397	3	1-1/2	1-1/2	1-1/4	1/16	2-1/2	1-5/32	0.8	0.5
21	H35H21	H	2.71	2.516	3	1-1/2	1-1/2	1-1/4	1/16	2-1/2	1-5/32	0.8	0.6
22	H35H22	H	2.83	2.635	3	1-1/2	1-1/2	1-1/4	1/16	2-1/2	1-5/32	0.8	0.7
23	H35H23	H	2.95	2.754	3	1-1/2	1-1/2	1-1/4	1/16	2-1/2	1-5/32	0.8	0.7
24	H35H24	H	3.07	2.873	3	1-1/2	1-1/2	1-1/4	1/16	2-1/2	1-5/32	0.8	0.8
25	H35H25	H	3.19	2.992	3	1-1/2	1-1/2	1-1/4	1/16	2-1/2	1-5/32	0.8	0.8
26	H35H26	H	3.31	3.111	3	1-1/2	1-1/2	1-1/4	1/16	2-1/2	1-5/32	0.8	0.8
28	H35H28	H	3.55	3.349	3	1-1/2	1-1/2	1-1/4	1/16	2-1/2	1-5/32	0.8	0.9
30	H35H30	H	3.79	3.588	3	1-1/2	1-1/2	1-1/4	1/16	2-1/2	1-5/32	0.8	0.9
32	35H32	H	4.03	3.826	3	1-1/2	1-1/2	1-1/4	1/16	2-1/2	1-5/32	0.8	0.9
35	35H35	H	4.39	4.184	3	1-1/2	1-1/2	1-1/4	1/16	2-1/2	1-5/32	0.8	1.0
36	35H36	H	4.51	4.303	3	1-1/2	1-1/2	1-1/4	1/16	2-1/2	1-5/32	0.8	1.0
40	35H40	H	4.99	4.780	3	1-1/2	1-1/2	1-1/4	1/16	2-1/2	1-5/32	0.8	1.2
42	35H42	H	5.23	5.018	3	1-1/2	1-1/2	1-1/4	1/16	2-1/2	1-5/32	0.8	1.2
45	35H45	H	5.59	5.376	3	1-1/2	1-1/2	1-1/4	1/16	2-1/2	1-5/32	0.8	1.4
48	35H48	H	5.95	5.734	3	1-1/2	1-1/2	1-1/4	1/16	2-1/2	1-5/32	0.8	1.5
54	35H54	H	6.66	6.449	3	1-1/2	1-1/2	1-1/4	1/16	2-1/2	1-5/32	0.8	1.8
60	35H60	H	7.38	7.165	3	1-1/2	1-1/2	1-1/4	1/16	2-1/2	1-5/32	0.8	2.3
70	35H70	H	8.58	8.358	3	1-1/2	1-1/2	1-1/4	1/16	2-1/2	1-5/32	0.8	2.8
72	35H72	H	8.81	8.597	3	1-1/2	1-1/2	1-1/4	1/16	2-1/2	1-5/32	0.8	3.0
80	35H80	H	9.77	9.552	3	1-1/2	1-1/2	1-1/4	1/16	2-1/2	1-5/32	0.8	3.8
84	35H84	H	10.25	10.029	3	1-1/2	1-1/2	1-1/4	1/16	2-1/2	1-5/32	0.8	4.0
96	35H96	H	11.68	11.461	3	1-1/2	1-1/2	1-1/4	1/16	2-1/2	1-5/32	0.8	5.3
112	35H112	H	13.59	13.371	3	1-1/2	1-1/2	1-1/4	1/16	2-1/2	1-5/32	0.8	6.8

Sprockets with "H" prefix have hardened teeth.

**NOTE:** Maximum bores shown will accommodate a standard keyseat and a setscrew over the keyseat. Slightly larger bores are possible with no keyseat, a shallow keyseat, or a setscrew at an angle to the keyseat.