

40 Sprockets

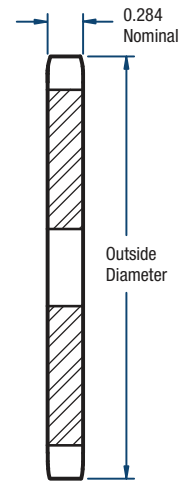
1/2" Pitch



BLACKSTAR®

Single- Type A

No. of Teeth	Catalog Number	Diameters (in)		Stock Bore (in)	Approx. Weight (lbs)
		Outside	Pitch		
12	H40A12	2.17	1.932	1/2	0.18
13	H40A13	2.33	2.089	1/2	0.22
14	H40A14	2.49	2.247	1/2	0.26
15	H40A15	2.65	2.405	5/8	0.30
16	H40A16	2.81	2.563	5/8	0.34
17	H40A17	2.98	2.721	5/8	0.36
18	H40A18	3.14	2.879	5/8	0.44
19	H40A19	3.30	3.038	5/8	0.46
20	H40A20	3.46	3.196	5/8	0.56
21	H40A21	3.62	3.355	5/8	0.58
22	H40A22	3.78	3.513	5/8	0.66
23	H40A23	3.94	3.672	5/8	0.72
24	H40A24	4.10	3.831	5/8	0.82
25	H40A25	4.26	3.989	5/8	0.88
26	H40A26	4.42	4.148	5/8	0.94
27	H40A27	4.58	4.307	5/8	0.98
28	H40A28	4.74	4.465	5/8	1.10
29	H40A29	4.90	4.625	19/32	1.22
30	H40A30	5.06	4.783	19/32	1.26
31	40A31	5.22	4.942	19/32	1.40
32	40A32	5.38	5.101	19/32	1.48
33	40A33	5.54	5.260	19/32	1.56
34	40A34	5.70	5.419	19/32	1.64
35	40A35	5.86	5.578	19/32	1.70
36	40A36	6.02	5.737	19/32	1.84
37	40A37	6.18	5.896	19/32	1.92
38	40A38	6.33	6.055	19/32	2.00
39	40A39	6.49	6.214	19/32	2.02
40	40A40	6.65	6.373	23/32	2.22
41	40A41	6.81	6.532	23/32	2.42
42	40A42	6.97	6.691	23/32	2.50
43	40A43	7.13	6.850	23/32	2.80
44	40A44	7.29	7.009	23/32	2.85
45	40A45	7.45	7.168	23/32	3.15
46	40A46	7.61	7.327	23/32	3.26
47	40A47	7.77	7.486	23/32	3.32
48	40A48	7.93	7.645	23/32	3.22
49	40A49	8.09	7.804	23/32	3.44
50	40A50	8.25	7.963	23/32	3.62
51	40A51	8.41	8.122	23/32	3.94
52	40A52	8.57	8.281	23/32	4.08
53	40A53	8.73	8.440	23/32	4.24
54	40A54	8.89	8.599	23/32	4.44
55	40A55	9.04	8.758	23/32	4.54
56	40A56	9.20	8.917	23/32	4.84
57	40A57	9.36	9.077	23/32	5.00
58	40A58	9.52	9.235	23/32	5.12
59	40A59	9.68	9.395	23/32	5.30
60	40A60	9.84	9.554	23/32	5.48
70	40A70	11.43	11.145	23/32	7.24
72	40A72	11.75	11.463	23/32	7.74
80	40A80	13.03	12.736	23/32	10.20
84	40A84	13.66	13.372	23/32	10.70
96	40A96	15.57	15.282	15/16	12.15
112	40A112	18.12	17.827	15/16	20.00



TYPE A

Sprockets with "H" prefix have hardened teeth.