

40 Sprockets

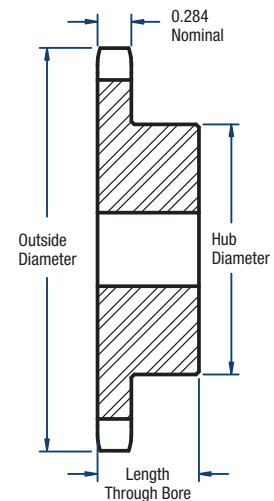
1/2" Pitch



BLACKSTAR®

Single- Type B

No. of Teeth	Catalog Number	Diameters (in)		Bore (in)		Hub (in)		Approx. Weight (lbs)
		Outside	Pitch	Min.	Max.	Diameter	Length Through Bore	
8	H40B8	1.50	1.307	1/2	1/2	31/32*	7/8	0.18
9	H40B9	1.67	1.462	1/2	9/16	1-1/16*	7/8	0.20
10	H40B10	1.84	1.618	1/2	3/4	1-1/4*	7/8	0.27
11	H40B11	2.00	1.775	1/2	7/8	1-3/8*	7/8	0.35
12	H40B12	2.17	1.932	1/2	1	1-9/16*	7/8	0.45
13	H40B13	2.33	2.089	1/2	1-1/16	1-9/16*	7/8	0.50
14	H40B14	2.49	2.247	1/2	1-1/8	1-11/16	7/8	0.59
15	H40B15	2.65	2.405	1/2	1-1/4	1-13/16	7/8	0.70
16	H40B16	2.81	2.563	5/8	1-3/8	2	7/8	0.79
17	H40B17	2.98	2.721	5/8	1-7/16	2-1/8	1	1.04
18	H40B18	3.14	2.879	5/8	1-1/2	2-5/16	1	1.22
19	H40B19	3.30	3.038	5/8	1-3/4	2-1/2	1	1.43
20	H40B20	3.46	3.196	5/8	1-7/8	2-5/8	1	1.56
21	H40B21	3.62	3.355	5/8	1-7/8	2-3/4	1	1.73
22	H40B22	3.78	3.513	5/8	1-7/8	2-7/8	1	1.96
23	H40B23	3.94	3.672	5/8	2	3	1	2.13
24	H40B24	4.10	3.831	5/8	2-1/4	3-1/4	1	2.41
25	H40B25	4.26	3.989	5/8	2-1/4	3-1/4	1	2.54
26	H40B26	4.42	4.148	5/8	2-1/4	3-1/4	1	2.58
27	H40B27	4.58	4.307	5/8	2-1/4	3-1/4	1	2.66
28	H40B28	4.74	4.465	5/8	2-1/4	3-1/4	1	2.73
29	H40B29	4.90	4.625	5/8	2-1/4	3-1/4	1	2.80
30	H40B30	5.06	4.783	5/8	2-1/4	3-1/4	1	2.98
31	40B31	5.22	4.942	5/8	2-1/4	3-1/4	1	3.10
32	40B32	5.38	5.101	5/8	2-1/4	3-1/4	1	3.16
33	40B33	5.54	5.260	5/8	2-1/4	3-1/4	1	3.22
34	40B34	5.70	5.419	5/8	2-1/4	3-1/4	1	3.30
35	40B35	5.86	5.578	5/8	2-1/4	3-1/4	1	3.46
36	40B36	6.02	5.737	5/8	2-1/4	3-1/4	1	3.58
37	40B37	6.18	5.896	5/8	2-1/4	3-1/4	1	3.62
38	40B38	6.33	6.055	5/8	2-1/4	3-1/4	1	3.70
39	40B39	6.49	6.214	5/8	2-1/4	3-1/4	1	3.76
40	40B40	6.65	6.373	3/4	2-3/8	3-1/2	1-1/8	4.69
41	40B41	6.81	6.532	3/4	2-3/8	3-1/2	1-1/8	4.76
42	40B42	6.97	6.691	3/4	2-3/8	3-1/2	1-1/8	4.82
43	40B43	7.13	6.850	3/4	2-3/8	3-1/2	1-1/8	5.12
44	40B44	7.29	7.009	3/4	2-3/8	3-1/2	1-1/8	5.15
45	40B45	7.45	7.168	3/4	2-3/8	3-1/2	1-1/8	5.30
46	40B46	7.61	7.327	3/4	2-3/8	3-1/2	1-1/8	5.57
47	40B47	7.77	7.486	3/4	2-3/8	3-1/2	1-1/8	5.64
48	40B48	7.93	7.645	3/4	2-3/8	3-1/2	1-1/8	5.84
49	40B49	8.09	7.804	3/4	2-3/8	3-1/2	1-1/8	5.90
50	40B50	8.25	7.963	3/4	2-3/8	3-1/2	1-1/8	5.96
51	40B51	8.41	8.122	3/4	2-3/8	3-1/2	1-1/8	6.08
52	40B52	8.57	8.281	3/4	2-3/8	3-1/2	1-1/8	6.28
53	40B53	8.73	8.440	3/4	2-3/8	3-1/2	1-1/8	6.33
54	40B54	8.89	8.599	3/4	2-3/8	3-1/2	1-1/8	6.42
55	40B55	9.04	8.758	3/4	2-3/8	3-1/2	1-1/8	6.46
56	40B56	9.20	8.917	3/4	2-3/8	3-1/2	1-1/8	6.89
57	40B57	9.36	9.077	3/4	2-3/8	3-1/2	1-1/8	7.02
58	40B58	9.52	9.235	3/4	2-3/8	3-1/2	1-1/8	7.36
59	40B59	9.68	9.395	3/4	2-3/8	3-1/2	1-1/8	7.45
60	40B60	9.84	9.554	3/4	2-3/8	3-1/2	1-1/8	7.86
70	40B70	11.43	11.145	3/4	2-3/4	4	1-1/4	11.00
72	40B72	11.75	11.463	3/4	2-3/4	4	1-1/4	11.50
80	40B80	13.03	12.736	3/4	2-3/4	4	1-1/4	13.40
84	40B84	13.66	13.372	3/4	2-3/4	4	1-1/4	14.04
96	40B96	15.57	15.282	1	2-3/4	4	1-1/4	17.56
112	40B112	18.12	17.827	1	2-3/4	4	1-1/4	22.56



TYPE B

*Has a recessed groove in the hub for chain clearance.

NOTE: Maximum bores shown will accommodate a standard keyseat and a setscrew over the keyseat. Slightly larger bores are possible with no keyseat, a shallow keyseat, or a setscrew at an angle to the keyseat.