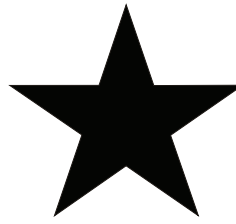


40 Sprockets

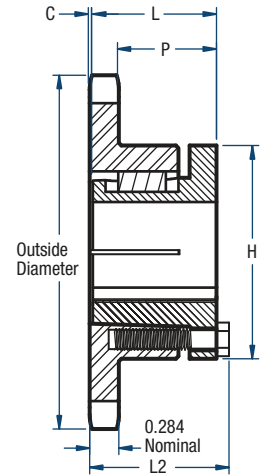
1/2" Pitch



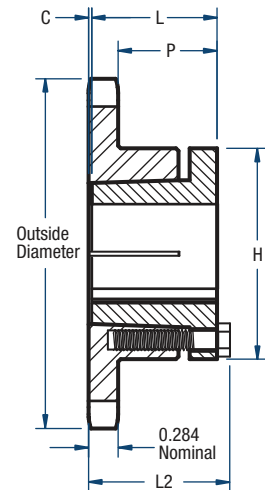
BLACKSTAR®

Single- Split Taper Style

No. of Teeth	Catalog Number	Bushing	Diameters (in)		Type	Max. Bore	Dimensions (in)					Approx. Weight (lbs)	
			Outside Diameter	Pitch Diameter			L2	L	C	H	P	Bushing Only	Sprocket Only
15	H40H15	H	2.65	2.405	3	1-1/2	1-19/32	1-1/4	5/32	2-1/2	1-1/8	0.8	0.5
16	H40H16	H	2.81	2.563	3	1-1/2	1-19/32	1-1/4	5/32	2-1/2	1-1/8	0.8	0.6
17	H40H17	H	2.98	2.721	3	1-1/2	1-1/2	1-1/4	1/16	2-1/2	1-1/32	0.8	0.6
18	H40H18	H	3.14	2.879	3	1-1/2	1-1/2	1-1/4	1/16	2-1/2	1-1/32	0.8	0.6
18	H40P18	P1	3.14	2.879	4	1-3/4	2-3/16	1-15/16	0	3	1-21/32	1.3	1.4
19	H40H19	H	3.30	3.038	3	1-1/2	1-1/2	1-1/4	1/16	2-1/2	1-1/32	0.8	0.8
19	H40P19	P1	3.30	3.038	4	1-3/4	2-3/16	1-15/16	0	3	1-21/32	1.3	1.3
20	H40H20	H	3.46	3.196	3	1-1/2	1-1/2	1-1/4	1/16	2-1/2	1-1/32	0.8	0.9
20	H40P20	P1	3.46	3.196	4	1-3/4	2-3/16	1-15/16	0	3	1-21/32	1.3	1.3
21	H40H21	H	3.62	3.355	3	1-1/2	1-1/2	1-1/4	1/16	2-1/2	1-1/32	0.8	0.9
21	H40P21	P1	3.62	3.355	4	1-3/4	2-3/16	1-15/16	0	3	1-21/32	1.3	1.5
22	H40H22	H	3.78	3.513	3	1-1/2	1-1/2	1-1/4	1/16	2-1/2	1-1/32	0.8	1.0
22	H40P22	P1	3.78	3.513	4	1-3/4	2-3/16	1-15/16	0	3	1-21/32	1.3	1.6
23	H40H23	H	3.94	3.672	3	1-1/2	1-1/2	1-1/4	1/16	2-1/2	1-1/32	0.8	1.0
23	H40P23	P1	3.94	3.672	4	1-3/4	2-3/16	1-15/16	0	3	1-21/32	1.3	1.7
24	H40H24	H	4.10	3.831	3	1-1/2	1-1/2	1-1/4	1/16	2-1/2	1-1/32	0.8	1.1
24	H40P24	P1	4.10	3.831	4	1-3/4	2-3/16	1-15/16	0	3	1-21/32	1.3	1.8
25	H40H25	H	4.26	3.989	3	1-1/2	1-1/2	1-1/4	1/16	2-1/2	1-1/32	0.8	1.3
25	H40P25	P1	4.26	3.989	4	1-3/4	2-3/16	1-15/16	0	3	1-21/32	1.3	1.9
26	H40H26	H	4.42	4.148	3	1-1/2	1-1/2	1-1/4	1/16	2-1/2	1-1/32	0.8	1.3
26	H40P26	P1	4.42	4.148	4	1-3/4	2-3/16	1-15/16	0	3	1-21/32	1.3	1.9
27	H40H27	H	4.58	4.307	3	1-1/2	1-1/2	1-1/4	1/16	2-1/2	1-1/32	0.8	1.4
28	H40H28	H	4.74	4.465	3	1-1/2	1-1/2	1-1/4	1/16	2-1/2	1-1/32	0.8	1.4
28	H40P28	P1	4.74	4.465	4	1-3/4	2-3/16	1-15/16	0	3	1-21/32	1.3	2.1
29	H40P29	P1	4.90	4.625	4	1-3/4	2-3/16	1-15/16	0	3	1-21/32	1.3	2.3
30	H40H30	H	5.06	4.783	3	1-1/2	1-1/2	1-1/4	1/16	2-1/2	1-1/32	0.8	1.6
30	H40P30	P1	5.06	4.783	4	1-3/4	2-3/16	1-15/16	0	3	1-21/32	1.3	2.3
31	40P31	P1	5.22	4.942	4	1-3/4	2-3/16	1-15/16	0	3	1-21/32	1.3	2.5
32	40H32	H	5.38	5.101	3	1-1/2	1-1/2	1-1/4	1/16	2-1/2	1-1/32	0.8	1.8
32	40P32	P1	5.38	5.101	4	1-3/4	2-3/16	1-15/16	0	3	1-21/32	1.3	2.6
33	40H33	H	5.54	5.260	3	1-1/2	1-1/2	1-1/4	1/16	2-1/2	1-1/32	0.8	1.9
33	40P33	P1	5.54	5.260	4	1-3/4	2-3/16	1-15/16	0	3	1-21/32	1.3	2.6
34	40P34	P1	5.70	5.419	4	1-3/4	2-3/16	1-15/16	0	3	1-21/32	1.3	2.8
35	40H35	H	5.86	5.578	3	1-1/2	1-1/2	1-1/4	1/16	2-1/2	1-1/32	0.8	2.1
35	40P35	P1	5.86	5.578	4	1-3/4	2-3/16	1-15/16	0	3	1-21/32	1.3	2.9
36	40H36	H	6.02	5.737	3	1-1/2	1-1/2	1-1/4	1/16	2-1/2	1-1/32	0.8	2.3
36	40P36	P1	6.02	5.737	4	1-3/4	2-3/16	1-15/16	0	3	1-21/32	1.3	3.1
37	40P37	P1	6.18	5.896	4	1-3/4	2-3/16	1-15/16	0	3	1-21/32	1.3	3.3
38	40H38	H	6.33	6.055	3	1-1/2	1-1/2	1-1/4	1/16	2-1/2	1-1/32	0.8	2.6
38	40P38	P1	6.33	6.055	4	1-3/4	2-3/16	1-15/16	0	3	1-21/32	1.3	3.3
40	40H40	H	6.65	6.373	3	1-1/2	1-1/2	1-1/4	1/16	2-1/2	1-1/32	0.8	2.8
40	40P40	P1	6.65	6.373	4	1-3/4	2-3/16	1-15/16	0	3	1-21/32	1.3	3.5
41	40P41	P1	6.81	6.532	4	1-3/4	2-3/16	1-15/16	0	3	1-21/32	1.3	3.6
42	40P42	P1	6.97	6.691	4	1-3/4	2-3/16	1-15/16	0	3	1-21/32	1.3	3.9
44	40P44	P1	7.29	7.009	4	1-3/4	2-3/16	1-15/16	0	3	1-21/32	1.3	4.0
45	40P45	P1	7.45	7.168	4	1-3/4	2-3/16	1-15/16	0	3	1-21/32	1.3	4.2
47	40P47	P1	7.77	7.486	4	1-3/4	2-3/16	1-15/16	0	3	1-21/32	1.3	4.6
48	40P48	P1	7.93	7.645	4	1-3/4	2-3/16	1-15/16	0	3	1-21/32	1.3	4.8
50	40P50	P1	8.25	7.963	4	1-3/4	2-3/16	1-15/16	0	3	1-21/32	1.3	5.0
54	40P54	P1	8.89	8.599	4	1-3/4	2-3/16	1-15/16	0	3	1-21/32	1.3	5.5
56	40P56	P1	9.20	8.917	4	1-3/4	2-3/16	1-15/16	0	3	1-21/32	1.3	5.9
60	40P60	P1	9.84	9.554	4	1-3/4	2-3/16	1-15/16	0	3	1-21/32	1.3	6.6
60	40Q60	Q1	9.84	9.554	4	2-11/16	2-25/32	2-1/2	0	4-1/8	2-7/32	3.5	8.8
70	40P70	P1	11.43	11.145	4	1-3/4	2-3/16	1-15/16	0	3	1-21/32	1.3	8.6
70	40Q70	Q1	11.43	11.145	4	2-11/16	2-25/32	2-1/2	0	4-1/8	2-7/32	3.5	11.0
72	40Q72	Q1	11.75	11.463	4	2-11/16	2-25/32	2-1/2	0	4-1/8	2-7/32	3.5	11.2
80	40Q80	Q1	13.03	12.736	4	2-11/16	2-25/32	2-1/2	0	4-1/8	2-7/32	3.5	13.1
84	40Q84	Q1	13.66	13.372	4	2-11/16	2-25/32	2-1/2	0	4-1/8	2-7/32	3.5	14.1
96	40Q96	Q1	15.57	15.282	4	2-11/16	2-25/32	2-1/2	0	4-1/8	2-7/32	3.5	12.8
112	40Q112	Q1	18.12	17.827	4	2-11/16	2-25/32	2-1/2	0	4-1/8	2-7/32	3.5	17.3



TYPE 4



TYPE 3

Sprockets with "H" prefix have hardened teeth.

NOTE: Maximum bores shown will accommodate a standard keyseat and a setscrew over the keyseat. Slightly larger bores are possible with no keyseat, a shallow keyseat, or a setscrew at an angle to the keyseat.