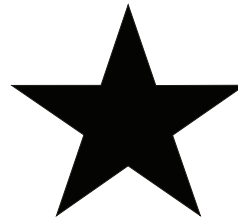
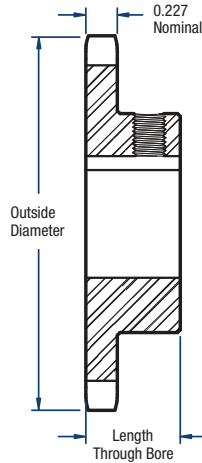


41 Sprockets

1/2" Pitch



BLACKSTAR®



Single-Bored to Size— Keyway and 2 Setscrews

No. of Teeth	Catalog Number	Diameters (in)		Length Through Bore (in)	Approx. Weight (lbs)	Stock Finished Bore Includes Keyway and 2 Setscrews											
		Outside	Pitch			1/2*	5/8	3/4	7/8	1	1-1/8	1-3/16	1-1/4	1-3/8	1-7/16	1-1/2	
9	H41BS9	1.67	1.462	7/8	0.20	1/2*	5/8	—	—	—	—	—	—	—	—	—	—
10	H41BS10	1.84	1.618	7/8	0.25	1/2*	5/8	—	—	—	—	—	—	—	—	—	—
11	H41BS11	2.00	1.775	7/8	0.32	1/2*	5/8	3/4	—	—	—	—	—	—	—	—	—
12	H41BS12	2.17	1.932	7/8	0.33	1/2*	5/8	3/4	7/8	—	—	—	—	—	—	—	—
13	H41BS13	2.33	2.089	7/8	0.43	1/2*	5/8	3/4	7/8	1	—	—	—	—	—	—	—
14	H41BS14	2.49	2.247	7/8	0.48	1/2*	5/8	3/4	7/8	1	—	—	—	—	—	—	—
15	H41BS15	2.65	2.405	7/8	0.59	1/2*	5/8	3/4	—	1	—	—	—	—	—	—	—
16	H41BS16	2.81	2.563	7/8	0.72	—	5/8	3/4	—	1	—	—	—	—	—	—	—
17	H41BS17	2.98	2.721	1	1.00	—	5/8	3/4	—	1	—	—	—	—	—	—	—
18	H41BS18	3.14	2.879	1	1.10	—	5/8	3/4	—	1	—	—	—	—	—	—	—
19	H41BS19	3.30	3.038	1	1.21	—	5/8	3/4	—	1	—	—	—	—	—	—	—
20	H41BS20	3.46	3.196	1	1.39	—	5/8	3/4	—	1	—	—	—	—	—	—	—
21	H41BS21	3.62	3.355	1	1.77	—	5/8	3/4	—	1	—	—	—	—	—	—	—
22	H41BS22	3.78	3.513	1	1.92	—	5/8	3/4	—	1	—	—	—	—	—	—	—
23	H41BS23	3.94	3.672	1	2.18	—	5/8	3/4	—	1	—	—	—	—	—	—	—
24	H41BS24	4.10	3.831	1	2.24	—	5/8	3/4	—	1	—	—	—	—	—	—	—
25	H41BS25	4.26	3.989	1	2.42	—	5/8	3/4	—	1	—	—	—	—	—	—	—
26	H41BS26	4.42	4.148	1	2.46	—	5/8	3/4	—	1	—	—	—	—	—	—	—
27	H41BS27	4.58	4.307	1	2.52	—	5/8	3/4	—	1	—	—	—	—	—	—	—
28	H41BS28	4.74	4.465	1	2.60	—	5/8	3/4	—	1	—	—	—	—	—	—	—
30	H41BS30	5.06	4.783	1	2.76	—	5/8	3/4	—	1	—	—	—	—	—	—	—
32	41BS32	5.38	5.101	1	2.92	—	5/8	3/4	—	1	—	—	—	—	—	—	—
35	41BS35	5.86	5.578	1	3.08	—	5/8	3/4	—	1	—	—	—	—	—	—	—
36	41BS36	6.02	5.737	1	3.28	—	5/8	3/4	—	1	—	—	—	—	—	—	—
40	41BS40	6.65	6.373	1 1/16	3.82	—	—	3/4	—	1	1-1/8	1-3/16	1-1/4	1-3/8	1-7/16	1-1/2	—
42	41BS42	6.97	6.691	1 1/16	3.68	—	—	3/4	—	1	1-1/8	1-3/16	1-1/4	1-3/8	1-7/16	1-1/2	—
45	41BS45	7.45	7.168	1 1/16	3.94	—	—	3/4	—	1	1-1/8	1-3/16	1-1/4	1-3/8	1-7/16	1-1/2	—
48	41BS48	7.93	7.645	1 1/16	4.68	—	—	3/4	—	1	1-1/8	1-3/16	1-1/4	1-3/8	1-7/16	1-1/2	—
54	41BS54	8.89	8.599	1 1/16	5.44	—	—	3/4	—	1	1-1/8	1-3/16	1-1/4	1-3/8	1-7/16	1-1/2	—
60	41BS60	9.84	9.554	1 1/16	6.54	—	—	3/4	—	1	1-1/8	1-3/16	1-1/4	1-3/8	1-7/16	1-1/2	—
70	41BS70	11.43	11.145	1 3/16	9.28	—	—	3/4	—	1	1-1/8	1-3/16	1-1/4	1-3/8	1-7/16	1-1/2	—
72	41BS72	11.75	11.463	1 3/16	9.38	—	—	3/4	—	1	1-1/8	1-3/16	1-1/4	1-3/8	1-7/16	1-1/2	—
80	41BS80	13.03	12.736	1 3/16	11.28	—	—	3/4	—	1	1-1/8	1-3/16	1-1/4	1-3/8	1-7/16	1-1/2	—
84	41BS84	13.66	13.372	1 3/16	11.94	—	—	3/4	—	1	1-1/8	1-3/16	1-1/4	1-3/8	1-7/16	1-1/2	—
96	41BS96	15.57	15.282	1 3/16	14.51	—	—	—	—	1	1-1/8	1-3/16	1-1/4	1-3/8	1-7/16	1-1/2	—
112	41BS112	18.12	17.827	1 3/16	18.81	—	—	—	—	1	1-1/8	1-3/16	1-1/4	1-3/8	1-7/16	1-1/2	—

*Indicates no keyway and (2) 1/4" setscrews only.

NOTE: Keyway is on center line of tooth.

**Keyway with only one setscrew at 90 degrees.
Hub diameters may vary to suit different bore sizes.

Sprockets with "H" prefix have hardened teeth.