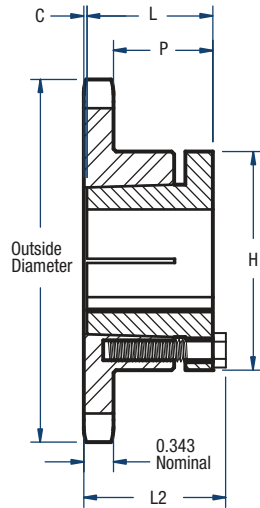
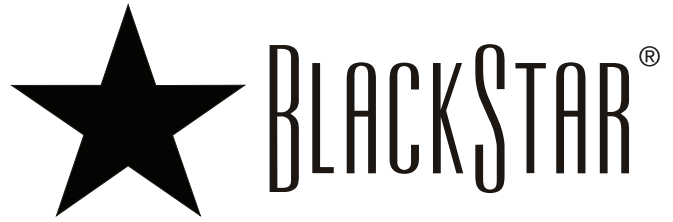
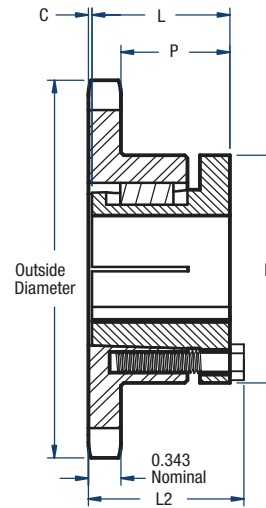


# 50 Sprockets

## 5/8" Pitch



**TYPE 3**



**TYPE 4**

### Single-Split Taper Style (continued on next page)

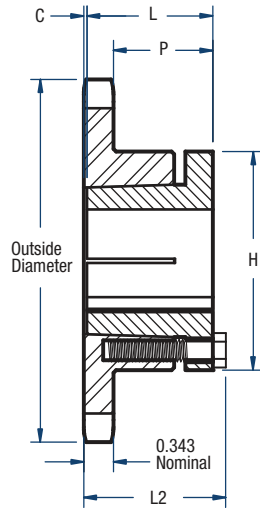
No. of Teeth	Catalog Number	Bushing	Diameters (in)		Type	Max. Bore	Dimensions (in)					Approx. Weight (lbs)	
			Outside	Pitch			L2	L	C	H	P	Bushing Only	Sprocket Only
13	H50H13	H	2.91	2.612	3	1-1/2	1-23/32	1-1/4	7/32	2-1/2	1-5/32	0.8	0.6
14	H50H14	H	3.11	2.809	3	1-1/2	1-5/8	1-1/4	5/32	2-1/2	1-3/32	0.8	0.6
15	H50H15	H	3.32	3.006	3	1-1/2	1-1/2	1-1/4	1/16	2-1/2	31/32	0.8	0.8
15	H50P15	P1	3.32	3.006	4	1-3/4	2-3/16	1-15/16	0	3	1-19/32	1.3	1.1
16	H50H16	H	3.52	3.204	3	1-1/2	1-1/2	1-1/4	1/16	2-1/2	31/32	0.8	0.9
16	H50P16	P1	3.52	3.204	4	1-3/4	2-3/16	1-15/16	0	3	1-19/32	1.3	1.4
17	H50H17	H	3.72	3.401	3	1-1/2	1-1/2	1-1/4	1/16	2-1/2	31/32	0.8	1.0
17	H50P17	P1	3.72	3.401	4	1-3/4	2-3/16	1-15/16	0	3	1-19/32	1.3	1.4
18	H50H18	H	3.92	3.599	3	1-1/2	1-1/2	1-1/4	1/16	2-1/2	31/32	0.8	1.1
18	H50P18	P1	3.92	3.599	4	1-3/4	2-3/16	1-15/16	0	3	1-19/32	1.3	1.8
19	H50H19	H	4.12	3.798	3	1-1/2	1-1/2	1-1/4	1/16	2-1/2	31/32	0.8	1.3
19	H50P19	P1	4.12	3.798	4	1-3/4	2-3/16	1-15/16	0	3	1-19/32	1.3	1.8
20	H50H20	H	4.32	3.995	3	1-1/2	1-1/2	1-1/4	1/16	2-1/2	31/32	0.8	1.5
20	H50P20	P1	4.32	3.995	4	1-3/4	2-3/16	1-15/16	0	3	1-19/32	1.3	2.0
21	H50H21	H	4.52	4.194	3	1-1/2	1-1/2	1-1/4	1/16	2-1/2	31/32	0.8	1.4
21	H50P21	P1	4.52	4.194	4	1-3/4	2-3/16	1-15/16	0	3	1-19/32	1.3	2.1
22	H50H22	H	4.72	4.392	3	1-1/2	1-1/2	1-1/4	1/16	2-1/2	31/32	0.8	1.5
22	H50P22	P1	4.72	4.392	4	1-3/4	2-3/16	1-15/16	0	3	1-19/32	1.3	2.2
23	H50H23	H	4.92	4.590	3	1-1/2	1-1/2	1-1/4	1/16	2-1/2	31/32	0.8	1.7
23	H50P23	P1	4.92	4.590	4	1-3/4	2-3/16	1-15/16	0	3	1-19/32	1.3	2.4
23	H50Q23	Q1	4.92	4.590	4	2-11/16	2-25/32	2-1/2	3/32	4-1/8	2-1/4	3.5	3.2
24	H50H24	H	5.12	4.788	3	1-1/2	1-1/2	1-1/4	1/16	2-1/2	31/32	0.8	1.8
24	H50P24	P1	5.12	4.788	4	1-3/4	2-3/16	1-15/16	0	3	1-19/32	1.3	2.6
24	H50Q24	Q1	5.12	4.788	4	2-11/16	2-25/32	2-1/2	3/32	4-1/8	2-1/4	3.5	3.5

Sprockets with "H" prefix have hardened teeth.

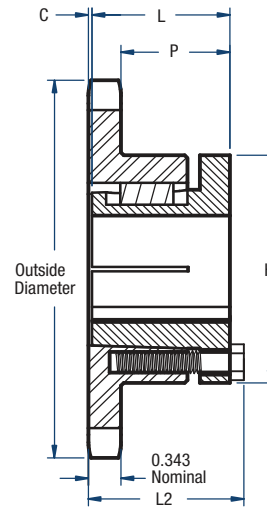
**NOTE:** Maximum bores shown will accommodate a standard keyseat and a setscrew over the keyseat. Slightly larger bores are possible with no keyseat, a shallow keyseat, or a setscrew at an angle to the keyseat.

# 50 Sprockets

## 5/8" Pitch



**TYPE 3**



**TYPE 4**

### Single-Split Taper Style (continued on next page)

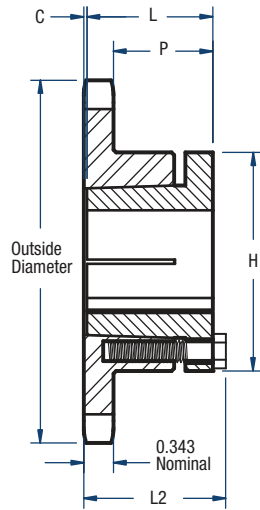
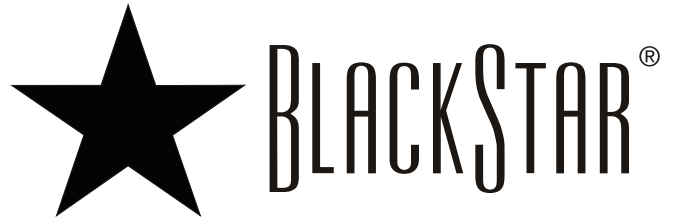
No. of Teeth	Catalog Number	Bushing	Diameters (in)		Type	Max. Bore	Dimensions (in)					Approx. Weight (lbs)	
			Outside	Pitch			L2	L	C	H	P	Bushing Only	Sprocket Only
25	H50H25	H	5.32	4.987	3	1-1/2	1-1/2	1-1/4	1/16	2-1/2	31/32	0.8	1.9
25	H50P25	P1	5.32	4.987	4	1-3/4	2-3/16	1-15/16	0	3	1-19/32	1.3	2.7
25	H50Q25	Q1	5.32	4.987	4	2-11/16	2-25/32	2-1/2	3/32	4-1/8	2-1/4	3.5	3.6
26	H50H26	H	5.52	5.185	3	1-1/2	1-1/2	1-1/4	1/16	2-1/2	31/32	0.8	2.0
26	H50P26	P1	5.52	5.185	4	1-3/4	2-3/16	1-15/16	0	3	1-19/32	1.3	2.8
26	H50Q26	Q1	5.52	5.185	4	2-11/16	2-25/32	2-1/2	3/32	4-1/8	2-1/4	3.5	3.7
27	H50H27	H	5.72	5.384	3	1-1/2	1-1/2	1-1/4	1/16	2-1/2	31/32	0.8	2.2
27	H50P27	P1	5.72	5.384	4	1-3/4	2-3/16	1-15/16	0	3	1-19/32	1.3	2.9
27	H50Q27	Q1	5.72	5.384	4	2-11/16	2-25/32	2-1/2	3/32	4-1/8	2-1/4	3.5	3.8
28	H50H28	H	5.92	5.582	3	1-1/2	1-1/2	1-1/4	1/16	2-1/2	31/32	0.8	2.5
28	H50P28	P1	5.92	5.582	4	1-3/4	2-3/16	1-15/16	0	3	1-19/32	1.3	3.0
28	H50Q28	Q1	5.92	5.582	4	2-11/16	2-25/32	2-1/2	3/32	4-1/8	2-1/4	3.5	4.0
29	H50P29	P1	6.12	5.781	4	1-3/4	2-3/16	1-15/16	0	3	1-19/32	1.3	3.4
30	H50H30	H	6.32	5.979	3	1-1/2	1-1/2	1-1/4	1/16	2-1/2	31/32	0.8	2.9
30	H50P30	P1	6.32	5.979	4	1-3/4	2-3/16	1-15/16	0	3	1-19/32	1.3	3.6
30	H50Q30	Q1	6.32	5.979	4	2-11/16	2-25/32	2-1/2	3/32	4-1/8	2-1/4	3.5	5.6
31	50P31	P1	6.52	6.178	4	1-3/4	2-3/16	1-15/16	0	3	1-19/32	3.5	3.6
32	50H32	H	6.72	6.376	3	1-1/2	1-1/2	1-1/4	1/16	2-1/2	31/32	0.8	3.2
32	50P32	P1	6.72	6.376	4	1-3/4	2-3/16	1-15/16	0	3	1-19/32	1.3	3.9
32	50Q32	Q1	6.72	6.376	4	2-11/16	2-25/32	2-1/2	3/32	4-1/8	2-1/4	3.5	6.1
33	50H33	H	6.92	6.575	3	1-1/2	1-1/2	1-1/4	1/16	2-1/2	31/32	0.8	3.4
33	50P33	P1	6.92	6.575	4	1-3/4	2-3/16	1-15/16	0	3	1-19/32	1.3	4.1
34	50H34	H	7.12	6.774	3	1-1/2	1-1/2	1-1/4	1/16	2-1/2	31/32	0.8	3.7
34	50P34	P1	7.12	6.774	4	1-3/4	2-3/16	1-15/16	0	3	1-19/32	3.5	4.3

Sprockets with "H" prefix have hardened teeth.

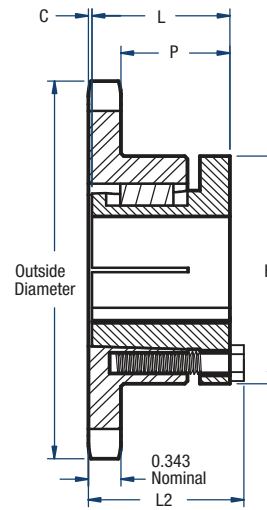
**NOTE:** Maximum bores shown will accommodate a standard keyseat and a setscrew over the keyseat. Slightly larger bores are possible with no keyseat, a shallow keyseat, or a setscrew at an angle to the keyseat.

# 50 Sprockets

## 5/8" Pitch



TYPE 3



TYPE 4

### Single- Split Taper Style (continued)

No. of Teeth	Catalog Number	Bushing	Diameters (in)		Type	Max. Bore	Dimensions (in)					Approx. Weight (lbs)	
			Outside	Pitch			L2	L	C	H	P	Bushing Only	Sprocket Only
35	50H35	H	7.32	6.973	3	1-1/2	1-1/2	1-1/4	1/16	2-1/2	31/32	0.8	3.8
35	50P35	P1	7.32	6.973	4	1-3/4	2-3/16	1-15/16	0	3	1-19/32	1.3	4.3
35	50Q35	Q1	7.32	6.973	4	2-11/16	2-25/32	2-1/2	3/32	4-1/8	2-1/4	3.5	6.8
36	50H36	H	7.52	7.171	3	1-1/2	1-1/2	1-1/4	1/16	2-1/2	31/32	0.8	4.0
36	50P36	P1	7.52	7.171	4	1-3/4	2-3/16	1-15/16	0	3	1-19/32	1.3	4.8
36	50Q36	Q1	7.52	7.171	4	2-11/16	2-25/32	2-1/2	3/32	4-1/8	2-1/4	3.5	6.8
37	50Q37	Q1	7.72	7.370	4	2-11/16	2-25/32	2-1/2	3/32	4-1/8	2-1/4	3.5	7.0
38	50H38	H	7.92	7.569	3	1-1/2	1-1/2	1-1/4	1/16	2-1/2	31/32	0.8	4.4
38	50Q38	Q1	7.92	7.569	4	2-11/16	2-25/32	2-1/2	3/32	4-1/8	2-1/4	3.5	7.4
39	50Q39	Q1	8.12	7.768	4	2-11/16	2-25/32	2-1/2	3/32	4-1/8	2-1/4	3.5	7.6
40	50Q40	H	8.32	7.966	3	1-1/2	1-1/2	1-1/4	1/16	2-1/2	31/32	0.8	4.8

Sprockets with "H" prefix have hardened teeth.

**NOTE:** Maximum bores shown will accommodate a standard keyseat and a setscrew over the keyseat. Slightly larger bores are possible with no keyseat, a shallow keyseat, or a setscrew at an angle to the keyseat.