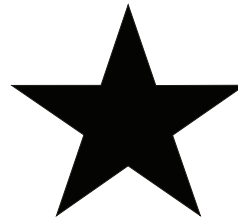
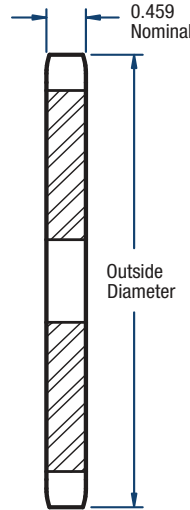


60 Sprockets

3/4" Pitch



BLACKSTAR®



TYPE A

Single- Type A

No. of Teeth	Catalog Number	Diameters (in)		Stock Bore (in)	Approx. Weight (lbs)
		Outside	Pitch		
10	H60A10	2.76	2.427	3/4	0.4
11	H60A11	3.00	2.663	3/4	0.5
12	H60A12	3.25	2.898	3/4	0.7
13	H60A13	3.49	3.134	3/4	0.8
14	H60A14	3.74	3.371	3/4	0.9
15	H60A15	3.98	3.608	3/4	1.1
16	H60A16	4.22	3.845	3/4	1.2
17	H60A17	4.46	4.082	3/4	1.4
18	H60A18	4.70	4.319	3/4	1.6
19	H60A19	4.95	4.557	3/4	1.8
20	H60A20	5.19	4.794	3/4	2.1
21	H60A21	5.43	5.033	3/4	2.3
22	H60A22	5.67	5.270	3/4	2.5
23	H60A23	5.91	5.508	3/4	2.7
24	H60A24	6.15	5.746	23/32	3.0
25	H60A25	6.39	5.984	23/32	3.3
26	H60A26	6.63	6.222	23/32	3.5
27	H60A27	6.87	6.461	23/32	4.0
28	H60A28	7.11	6.698	23/32	4.1
29	H60A29	7.35	6.937	23/32	4.4
30	H60A30	7.59	7.175	23/32	4.8
31	60A31	7.83	7.413	23/32	5.2
32	60A32	8.07	7.652	23/32	5.5
33	60A33	8.31	7.890	15/16	5.9
34	60A34	8.54	8.129	15/16	6.2
35	60A35	8.78	8.367	15/16	6.8
36	60A36	9.02	8.606	15/16	6.8
37	60A37	9.26	8.844	15/16	7.5
38	60A38	9.50	9.083	15/16	7.8
39	60A39	9.74	9.321	15/16	8.3
40	60A40	9.98	9.560	15/16	8.6

No. of Teeth	Catalog Number	Diameters (in)		Stock Bore (in)	Approx. Weight (lbs)
		Outside	Pitch		
41	60A41	10.22	9.798	15/16	9.1
42	60A42	10.46	10.037	15/16	9.8
43	60A43	10.70	10.275	15/16	9.7
44	60A44	10.94	10.514	15/16	10.8
45	60A45	11.18	10.752	15/16	11.2
46	60A46	11.41	10.991	15/16	11.5
47	60A47	11.65	11.229	15/16	12.3
48	60A48	11.89	11.468	15/16	12.4
49	60A49	12.13	11.706	15/16	12.9
50	60A50	12.37	11.945	15/16	14.0
51	60A51	12.61	12.183	15/16	14.6
52	60A52	12.85	12.422	15/16	14.6
53	60A53	13.09	12.660	15/16	15.8
54	60A54	13.33	12.899	15/16	15.9
55	60A55	13.57	13.137	1-1/4	17.0
56	60A56	13.81	13.376	1-1/4	17.6
57	60A57	14.04	13.615	1-1/4	17.6
58	60A58	14.28	13.853	1-1/4	19.0
59	60A59	14.52	14.092	1-1/4	19.2
60	60A60	14.76	14.330	1-1/4	20.0
64	60A64	15.72	15.285	1-1/4	23.0
65	60A65	15.96	15.524	1-1/4	23.2
68	60A68	16.67	16.240	1-1/4	25.5
70	60A70	17.15	16.717	1-1/4	27.2
72	60A72	17.63	17.195	1-1/4	28.9
76	60A76	18.58	18.149	1-1/4	32.3
80	60A80	19.54	19.103	1-1/4	35.5
84	60A84	20.49	20.058	1-1/4	40.2
90	60A90	21.93	21.491	1-1/4	43.4
96	60A96	23.36	22.922	1-1/4	52.0
112	60A112	27.18	26.741	1-1/4	70.8

*Has recessed groove in the hub for chain clearance.
Sprockets with "H" prefix have hardened teeth.