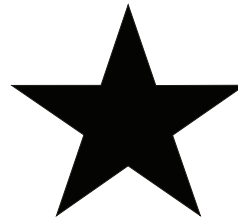
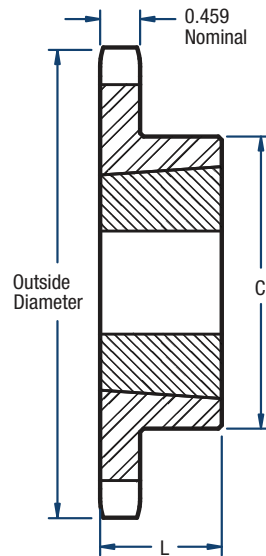


60 Sprockets

3/4" Pitch



BLACKSTAR®



TYPE B

Single- TL Style

No. of Teeth	Catalog Number	Bushing	Diameters (in)		Type	Max. Bore	Dimensions (in)		Approx. Weight (lbs)	
			Outside	Pitch			L	C	Bushing Only	Sprocket Only
11	H60BTL11	1008	3.00	2.663	B	1	7/8	1-13/16	0.3	0.6
12	H60BTL12	1008	3.25	2.898	B	1	7/8	1-15/16	0.3	0.8
13	H60BTL13	1210	3.49	3.134	B	1-1/4	1	2-15/32*	0.6	0.8
14	H60BTL14	1210	3.74	3.371	B	1-1/4	1	2-15/32	0.6	1.0
15	H60BTL15	1610	3.98	3.608	B	1-5/8	1	2-25/32	0.9	1.0
16	H60BTL16	1610	4.22	3.845	B	1-5/8	1	3	0.9	1.4
17	H60BTL17	1610	4.46	4.082	B	1-5/8	1	3-1/4	0.9	1.8
18	H60BTL18	1610	4.70	4.319	B	1-5/8	1	3-1/4	0.9	1.9
19	H60BTL19	1610	4.95	4.557	B	1-5/8	1	3-1/4	0.9	2.2
20	H60BTL20	2012	5.19	4.794	B	2	1-1/4	3-9/16	1.7	2.2
21	H60BTL21	2012	5.43	5.033	B	2	1-1/4	3-9/16	1.7	2.5
22	H60BTL22	2012	5.67	5.270	B	2	1-1/4	3-9/16	1.7	2.8
23	H60BTL23	2012	5.91	5.508	B	2	1-1/4	3-9/16	1.7	3.1
24	H60BTL24	2012	6.15	5.746	B	2	1-1/4	3-9/16	1.7	3.4
25	H60BTL25	2012	6.39	5.984	B	2	1-1/4	3-9/16	1.7	3.7
26	H60BTL26	2012	6.63	6.222	B	2	1-1/4	3-9/16	1.7	4.0
27	H60BTL27	2012	6.87	6.461	B	2	1-1/4	3-9/16	1.7	4.2
28	H60BTL28	2012	7.11	6.698	B	2	1-1/4	3-9/16	1.7	4.6
30	H60BTL30	2012	7.59	7.175	B	2	1-1/4	3-9/16	1.7	5.2
32	60BTL32	2012	8.07	7.652	B	2	1-1/4	3-9/16	1.7	5.6
35	60BTL35	2012	8.78	8.367	B	2	1-1/4	3-9/16	1.7	6.4
36	60BTL36	2012	9.02	8.606	B	2	1-1/4	3-9/16	1.7	6.6
40	60BTL40	2012	9.98	9.560	B	2	1-1/4	3-9/16	1.7	8.3
42	60BTL42	2012	10.46	10.037	B	2	1-1/4	3-9/16	1.7	10.0
45	60BTL45	2012	11.18	10.752	B	2	1-1/4	3-9/16	1.7	11.5
48	60BTL48	2012	11.89	11.468	B	2	1-1/4	3-9/16	1.7	13.2
54	60BTL54	2517	13.33	12.899	B	2-1/2	1-3/4	4-1/4	3.5	17.1
60	60BTL60	2517	14.76	14.330	B	2-1/2	1-3/4	4-1/4	3.5	21.0
70	60BTL70	2517	17.15	16.717	B	2-1/2	1-3/4	4-1/4	3.5	27.6
72	60BTL72	2517	17.63	17.195	B	2-1/2	1-3/4	4-1/4	3.5	30.0
80	60BTL80	2517	19.54	19.103	B	2-1/2	1-3/4	4-1/4	3.5	36.3
84	60BTL84	2517	20.49	20.058	B	2-1/2	1-3/4	4-1/4	3.5	40.6

*Has recessed groove in the hub for chain clearance.
Sprockets with "H" prefix have hardened teeth.

NOTE: Maximum bores shown will accommodate a standard keyseat and a setscrew over the keyseat. Slightly larger bores are possible with no keyseat, a shallow keyseat, or a setscrew at an angle to the keyseat.