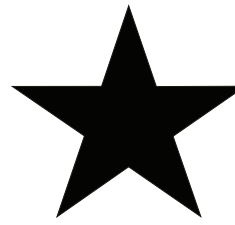
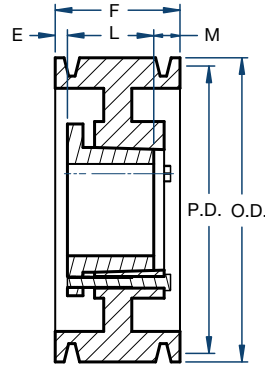
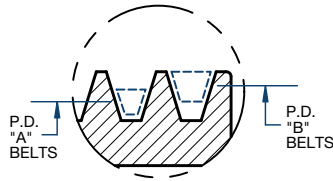


Sheaves

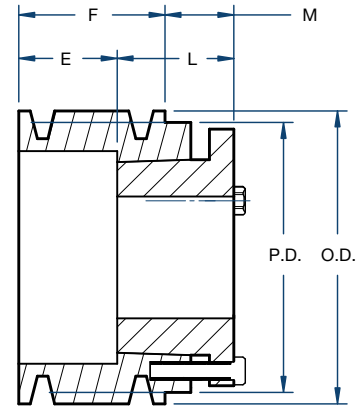
6B/QD STYLE



BLACKSTAR®



Type A



Type E

Part No.	Bushing	Bore Range (in)	Type	Diameter (in)			Dimensions (in)				Weight less Bore (lbs)
				Pitch B	Pitch A	Outside	E	F	L	M	
6B34SD	SD	1/2 - 2	E	3.4	3.0	3.75	3-31/32	4-3/4	1-13/16	1-1/32	6.7
6B36SD	SD	1/2 - 2	E	3.6	3.2	3.95	3-31/32	4-3/4	1-13/16	1-1/32	7.4
6B38SD	SD	1/2 - 2	E	3.8	3.4	4.15	3-31/32	4-3/4	1-13/16	1-1/32	8.0
6B40SD	SD	1/2 - 2	E	4.0	3.6	4.35	3-19/32	4-3/4	1-13/16	21/32	8.4
6B42SD	SD	1/2 - 2	E	4.2	3.8	4.55	3-19/32	4-3/4	1-13/16	21/32	9.0
6B44SD	SD	1/2 - 2	E	4.4	4.0	4.75	3-19/32	4-3/4	1-13/16	21/32	9.7
6B46SD	SD	1/2 - 2	A	4.6	4.2	4.95	21/32	4-3/4	1-13/16	2-9/32	10.1
6B48SD	SD	1/2 - 2	A	4.8	4.4	5.15	21/32	4-3/4	1-13/16	2-9/32	10.6
6B50SD	SD	1/2 - 2	A	5.0	4.6	5.35	21/32	4-3/4	1-13/16	2-9/32	11.0
6B52SD	SD	1/2 - 2	A	5.2	4.8	5.55	21/32	4-3/4	1-13/16	2-9/32	12.0
6B54SK	SK	1/2 - 2-5/8	A	5.4	5.0	5.75	17/32	4-3/4	1-15/16	2-9/32	13.0
6B56SK	SK	1/2 - 2-5/8	A	5.6	5.2	5.95	17/32	4-3/4	1-15/16	2-9/32	14.0
6B58SK	SK	1/2 - 2-5/8	A	5.8	5.4	6.15	17/32	4-3/4	1-15/16	2-9/32	14.6
6B60SK	SK	1/2 - 2-5/8	A	6.0	5.6	6.35	17/32	4-3/4	1-15/16	2-9/32	15.0
6B62SK	SK	1/2 - 2-5/8	A	6.2	5.8	6.55	17/32	4-3/4	1-15/16	2-9/32	16.0
6B64SK	SK	1/2 - 2-5/8	A	6.4	6.0	6.75	17/32	4-3/4	1-15/16	2-9/32	17.0
6B66SK	SK	1/2 - 2-5/8	A	6.6	6.2	6.95	17/32	4-3/4	1-15/16	2-9/32	18.0
6B68SK	SK	1/2 - 2-5/8	A	6.8	6.4	7.15	17/32	4-3/4	1-15/16	2-9/32	19.0
6B70SF	SF	1/2 - 2-15/16	A	7.0	6.6	7.35	27/32	4-3/4	2-1/16	1-27/32	20.0
6B74SF	SF	1/2 - 2-15/16	A	7.4	7.0	7.75	27/32	4-3/4	2-1/16	1-27/32	22.0
6B80SF	SF	1/2 - 2-15/16	A	8.0	7.6	8.35	27/32	4-3/4	2-1/16	1-27/32	24.0
6B86SF	SF	1/2 - 2-15/16	A	8.6	8.2	8.95	27/32	4-3/4	2-1/16	1-27/32	26.0
6B94SF	SF	1/2 - 2-15/16	A	9.4	9.0	9.75	27/32	4-3/4	2-1/16	1-27/32	27.0
6B110SF	SF	1/2 - 2-15/16	A	11.0	10.6	11.35	27/32	4-3/4	2-1/16	1-27/32	32.0
6B124SF	SF	1/2 - 2-15/16	A	12.4	12.0	12.75	27/32	4-3/4	2-1/16	1-27/32	39.0
6B136SF	SF	1/2 - 2-15/16	A	13.6	13.2	13.95	27/32	4-3/4	2-1/16	1-27/32	44.0
6B154SF	SF	1/2 - 2-15/16	A	15.4	15.0	15.75	27/32	4-3/4	2-1/16	1-27/32	50.0
6B160SF	SF	1/2 - 2-15/16	A	16.0	15.6	16.35	27/32	4-3/4	2-1/16	1-27/32	54.0
6B184SF	SF	1/2 - 2-15/16	A	18.4	18.0	18.75	27/32	4-3/4	2-1/16	1-27/32	62.0
6B200E	E	7/8 - 3-1/2	A	20.0	19.6	20.35	7/32	4-3/4	2-3/4	1-25/32	74.0
6B250E	E	7/8 - 3-1/2	A	25.0	24.6	25.35	7/32	4-3/4	2-3/4	1-25/32	96.0
6B300E	E	7/8 - 3-1/2	A	30.0	29.6	30.35	7/32	4-3/4	2-3/4	1-25/32	119.0
6B380E	E	7/8 - 3-1/2	A	38.0	37.6	38.35	7/32	4-3/4	2-3/4	1-25/32	134.0