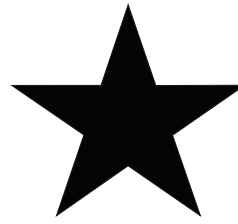
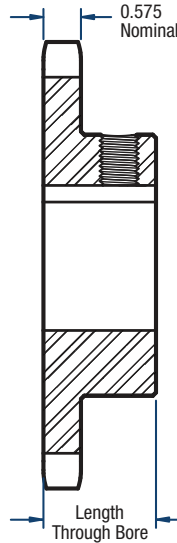


# 80 Sprockets

## 1" Pitch



# BLACKSTAR®



### Single- Bored to Size— Keyway and 2 Setscrews (continued on next page)

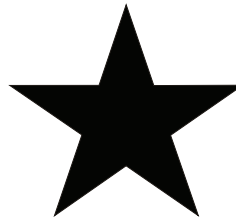
No. of Teeth	Catalog Number	Diameters (in)		Length Through Bore (in)	Approx. Weight (lbs)	Stock Finished Bore Includes Keyway and 2 Setscrews														
		Outside	Pitch			1	1-1/8	1-3/16	1-1/4	1-3/8	1-7/16	1-1/2	1-5/8	1-3/4	1-7/8	1-15/16	2	2-3/16	2-7/16	2-15/16
9	H80BS9	3.35	2.924	1-5/8	1.6	1	1-1/8	1-3/16	1-1/4	—	—	—	—	—	—	—	—	—	—	—
10	H80BS10	3.68	3.236	1-5/8	1.7	1	1-1/8	1-3/16	1-1/4	—	—	—	—	—	—	—	—	—	—	—
11	H80BS11	4.01	3.550	1-5/8	1.8	1	1-1/8	1-3/16	1-1/4	1-3/8	1-7/16	1-1/2	1-5/8	—	—	—	—	—	—	—
12	H80BS12	4.33	3.864	1-5/8	3.0	1	1-1/8	1-3/16	1-1/4	1-3/8	1-7/16	1-1/2	1-5/8	1-3/4	—	—	—	—	—	—
13	H80BS13	4.66	4.179	1-1/2	3.5	1	1-1/8	1-3/16	1-1/4	1-3/8	1-7/16	1-1/2	1-5/8	1-3/4	1-7/8	1-15/16	2	—	—	—
14	H80BS14	4.98	4.494	1-1/2	4.1	1	1-1/8	1-3/16	1-1/4	1-3/8	1-7/16	1-1/2	1-5/8	1-3/4	1-7/8	1-15/16	2	—	—	—
15	H80BS15	5.30	4.810	1-1/2	5.2	1	1-1/8	1-3/16	1-1/4	1-3/8	1-7/16	1-1/2	1-5/8	1-3/4	1-7/8	1-15/16	2	—	—	—
16	H80BS16	5.63	5.126	1-1/2	5.5	1	—	1-3/16	1-1/4	1-3/8	1-7/16	1-1/2	1-5/8	1-3/4	—	1-15/16	2	2-3/16	—	—
17	H80BS17	5.95	5.442	1-1/2	6.0	1	—	1-3/16	1-1/4	1-3/8	1-7/16	1-1/2	1-5/8	1-3/4	—	1-15/16	2	2-3/16	2-7/16	—
18	H80BS18	6.27	5.759	1-1/2	6.5	1	—	1-3/16	1-1/4	1-3/8	1-7/16	1-1/2	1-5/8	1-3/4	—	1-15/16	2	2-3/16	2-7/16	—
19	H80BS19	6.59	6.076	1-1/2	7.0	1	—	1-3/16	1-1/4	1-3/8	1-7/16	1-1/2	1-5/8	1-3/4	—	1-15/16	2	2-3/16	2-7/16	—
20	H80BS20	6.91	6.392	1-1/2	8.0	1	—	1-3/16	1-1/4	1-3/8	1-7/16	1-1/2	1-5/8	1-3/4	—	1-15/16	2	2-3/16	2-7/16	—
21	H80BS21	7.24	6.710	1-3/4	8.9	1	—	1-3/16	1-1/4	1-3/8	1-7/16	1-1/2	1-5/8	1-3/4	—	1-15/16	2	2-3/16	2-7/16	—
22	H80BS22	7.56	7.027	1-3/4	9.5	1	—	1-3/16	1-1/4	1-3/8	1-7/16	1-1/2	1-5/8	1-3/4	—	1-15/16	2	2-3/16	2-7/16	—
23	H80BS23	7.88	7.344	1-3/4	10.2	1	—	1-3/16	1-1/4	1-3/8	1-7/16	1-1/2	1-5/8	1-3/4	—	1-15/16	2	2-3/16	2-7/16	—
24	H80BS24	8.20	7.661	1-3/4	10.8	1	—	1-3/16	1-1/4	1-3/8	1-7/16	1-1/2	1-5/8	1-3/4	—	1-15/16	2	2-3/16	2-7/16	—
25	H80BS25	8.52	7.979	1-3/4	11.4	1	—	1-3/16	1-1/4	1-3/8	1-7/16	1-1/2	1-5/8	1-3/4	—	1-15/16	2	2-3/16	2-7/16	—
26	H80BS26	8.84	8.296	2	14.0	—	—	—	1-1/4	1-3/8	1-7/16	1-1/2	1-5/8	1-3/4	—	1-15/16	2	2-3/16	2-7/16	2-15/16
27	H80BS27	9.16	8.614	2	14.7	—	—	—	1-1/4	1-3/8	1-7/16	1-1/2	1-5/8	1-3/4	—	1-15/16	2	2-3/16	2-7/16	2-15/16
28	H80BS28	9.48	8.931	2	15.3	—	—	—	1-1/4	1-3/8	1-7/16	1-1/2	1-5/8	1-3/4	—	1-15/16	2	2-3/16	2-7/16	2-15/16
29	H80BS29	9.80	9.249	2	16.4	—	—	—	1-1/4	1-3/8	1-7/16	1-1/2	1-5/8	1-3/4	—	1-15/16	2	2-3/16	2-7/16	2-15/16
30	H80BS30	10.11	9.567	2	16.7	—	—	—	1-1/4	1-3/8	1-7/16	1-1/2	1-5/8	1-3/4	—	1-15/16	2	2-3/16	2-7/16	2-15/16
31	80BS31	10.43	9.884	2	18.0	—	—	—	1-1/4	1-3/8	1-7/16	1-1/2	1-5/8	1-3/4	—	1-15/16	2	2-3/16	2-7/16	2-15/16
32	80BS32	10.75	10.202	2	18.8	—	—	—	1-1/4	1-3/8	1-7/16	1-1/2	1-5/8	1-3/4	—	1-15/16	2	2-3/16	2-7/16	2-15/16
33	80BS33	11.07	10.520	2	18.9	—	—	—	1-1/4	1-3/8	1-7/16	1-1/2	1-5/8	1-3/4	—	1-15/16	2	2-3/16	2-7/16	2-15/16
34	80BS34	11.39	10.838	2	20.6	—	—	—	1-1/4	1-3/8	1-7/16	1-1/2	1-5/8	1-3/4	—	1-15/16	2	2-3/16	2-7/16	2-15/16

Sprockets with "H" prefix have hardened teeth.

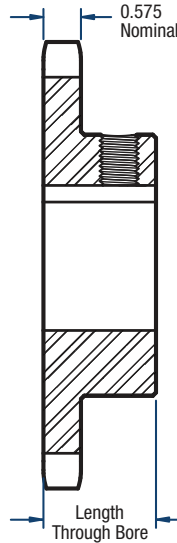
**NOTE:** Maximum bores shown will accommodate a standard keyseat and a setscrew over the keyseat. Slightly larger bores are possible with no keyseat, a shallow keyseat, or a setscrew at an angle to the keyseat.

# 80 Sprockets

## 1" Pitch



# BLACKSTAR®



### Single- Bored to Size— Keyway and 2 Setscrews (continued)

No. of Teeth	Catalog Number	Diameters (in)		Length Through Bore (in)	Approx. Weight (lbs)	Stock Finished Bore Includes Keyway and 2 Setscrews														
		Outside	Pitch																	
35	80BS35	11.71	11.156	2	21.4	—	—	—	1-1/4	1-3/8	1-7/16	1-1/2	1-5/8	1-3/4	—	1-15/16	2	2-3/16	2-7/16	2-15/16
36	80BS36	12.03	11.474	2	22.4	—	—	—	1-1/4	1-3/8	1-7/16	1-1/2	1-5/8	1-3/4	—	1-15/16	2	2-3/16	2-7/16	2-15/16
37	80BS37	12.35	11.792	2	23.9	—	—	—	1-1/4	1-3/8	1-7/16	1-1/2	1-5/8	1-3/4	—	1-15/16	2	2-3/16	2-7/16	2-15/16
38	80BS38	12.67	12.110	2	24.0	—	—	—	1-1/4	1-3/8	1-7/16	1-1/2	1-5/8	1-3/4	—	1-15/16	2	2-3/16	2-7/16	2-15/16
39	80BS39	12.99	12.428	2	24.9	—	—	—	1-1/4	1-3/8	1-7/16	1-1/2	1-5/8	1-3/4	—	1-15/16	2	2-3/16	2-7/16	2-15/16
40	80BS40	13.31	12.746	2	26.0	—	—	—	1-1/4	1-3/8	1-7/16	1-1/2	1-5/8	1-3/4	—	1-15/16	2	2-3/16	2-7/16	2-15/16
41	80BS41	13.63	13.064	2	27.1	—	—	—	—	1-3/8	1-7/16	1-1/2	1-5/8	1-3/4	—	1-15/16	2	2-3/16	2-7/16	2-15/16
42	80BS42	13.94	13.382	2	28.0	—	—	—	—	1-3/8	1-7/16	1-1/2	1-5/8	1-3/4	—	1-15/16	2	2-3/16	2-7/16	2-15/16
43	80BS43	14.26	13.700	2	29.3	—	—	—	—	1-3/8	1-7/16	1-1/2	1-5/8	1-3/4	—	1-15/16	2	2-3/16	2-7/16	2-15/16
44	80BS44	14.58	14.018	2	29.3	—	—	—	—	1-3/8	1-7/16	1-1/2	1-5/8	1-3/4	—	1-15/16	2	2-3/16	2-7/16	2-15/16
45	80BS45	14.90	14.336	2	30.7	—	—	—	—	1-3/8	1-7/16	1-1/2	1-5/8	1-3/4	—	1-15/16	2	2-3/16	2-7/16	2-15/16
46	80BS46	15.22	14.654	2	32.4	—	—	—	—	1-3/8	1-7/16	1-1/2	1-5/8	1-3/4	—	1-15/16	2	2-3/16	2-7/16	2-15/16
47	80BS47	15.54	14.972	2	33.3	—	—	—	—	1-3/8	1-7/16	1-1/2	1-5/8	1-3/4	—	1-15/16	2	2-3/16	2-7/16	2-15/16
48	80BS48	15.86	15.290	2	34.8	—	—	—	—	1-3/8	1-7/16	1-1/2	1-5/8	1-3/4	—	1-15/16	2	2-3/16	2-7/16	2-15/16
49	80BS49	16.18	15.608	2	35.1	—	—	—	—	1-3/8	1-7/16	1-1/2	1-5/8	1-3/4	—	1-15/16	2	2-3/16	2-7/16	2-15/16
50	80BS50	16.50	15.926	2	36.6	—	—	—	—	1-3/8	1-7/16	1-1/2	1-5/8	1-3/4	—	1-15/16	2	2-3/16	2-7/16	2-15/16
51	80BS51	16.81	16.244	2	38.5	—	—	—	—	1-3/8	1-7/16	1-1/2	1-5/8	1-3/4	—	1-15/16	2	2-3/16	2-7/16	2-15/16
52	80BS52	17.13	16.562	2	40.3	—	—	—	—	1-3/8	1-7/16	1-1/2	1-5/8	1-3/4	—	1-15/16	2	2-3/16	2-7/16	2-15/16
53	80BS53	17.45	16.880	2	42.2	—	—	—	—	1-3/8	1-7/16	1-1/2	1-5/8	1-3/4	—	1-15/16	2	2-3/16	2-7/16	2-15/16
54	80BS54	17.77	17.198	2	44.0	—	—	—	—	1-3/8	1-7/16	1-1/2	1-5/8	1-3/4	—	1-15/16	2	2-3/16	2-7/16	2-15/16
55	80BS55	18.09	17.516	2	46.3	—	—	—	—	1-3/8	1-7/16	1-1/2	1-5/8	1-3/4	—	1-15/16	2	2-3/16	2-7/16	2-15/16
56	80BS56	18.41	17.835	2	47.3	—	—	—	—	1-3/8	1-7/16	1-1/2	1-5/8	1-3/4	—	1-15/16	2	2-3/16	2-7/16	2-15/16
57	80BS57	18.73	18.153	2	48.9	—	—	—	—	1-3/8	1-7/16	1-1/2	1-5/8	1-3/4	—	1-15/16	2	2-3/16	2-7/16	2-15/16
58	80BS58	19.04	18.471	2	50.6	—	—	—	—	1-3/8	1-7/16	1-1/2	1-5/8	1-3/4	—	1-15/15	2	2-3/16	2-7/16	2-15/16
59	80BS59	19.36	18.789	2	52.2	—	—	—	—	1-3/8	1-7/16	1-1/2	1-5/8	1-3/4	—	1-15/16	2	2-3/16	2-7/16	2-15/16
60	80BS60	19.68	19.107	2	58.8	—	—	—	—	1-3/8	1-7/16	1-1/2	1-5/8	1-3/4	—	1-15/16	2	2-3/16	2-7/16	2-15/16

Sprockets with "H" prefix have hardened teeth.

**NOTE:** Maximum bores shown will accommodate a standard keyseat and a setscrew over the keyseat. Slightly larger bores are possible with no keyseat, a shallow keyseat, or a setscrew at an angle to the keyseat.