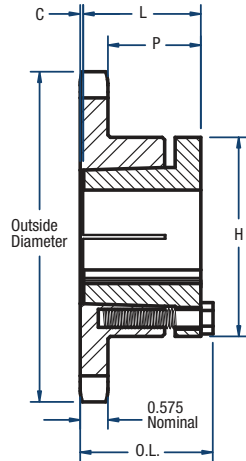


80 Sprockets

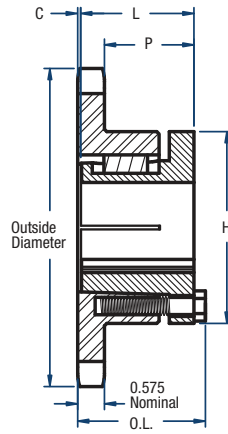
1" Pitch



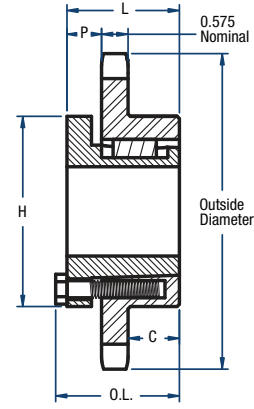
BLACKSTAR®



TYPE 3



TYPE 4



TYPE 5

Single-Split Taper Style (continued on next page)

No. of Teeth	Catalog Number	Bushing	Diameters (in)		Type	Max. Bore	Dimensions (in)					Approx. Weight (lbs)	
			Outside Diameter	Pitch Diameter			OL	L	C	H	P	Bushing Only	Sprocket Only
10	H80H10	H	3.68	3.236	3	1-1/2	2-3/32	1-1/4	21/32	2-1/2	1-21/64	0.8	2.0
11	H80H11	H	4.01	3.550	3	1-1/2	1-1/2	1-1/4	1/16	2-1/2	3/4	0.8	1.3
11	H80P11	P1	4.01	3.550	4	1-3/4	2-11/32	1-15/16	5/32	3	1-17/32	1.3	1.6
12	H80P12	P1	4.33	3.864	4	1-3/4	2-3/16	1-15/16	0	3	1-3/8	1.3	2.0
13	H80P13	P1	4.66	4.179	4	1-3/4	2-3/16	1-15/16	0	3	1-3/8	1.3	2.4
14	H80P14	P1	4.98	4.494	4	1-3/4	2-3/16	1-15/16	0	3	1-3/8	1.3	2.6
14	H80Q14	Q1	4.98	4.494	4	2-11/16	2-25/32	2-1/2	0	4-1/8	1-15/16	3.5	2.9
15	H80P15	P1	5.30	4.810	4	1-3/4	2-3/16	1-15/16	0	3	1-3/8	1.3	3.0
15	H80Q15	Q1	5.30	4.810	4	2-11/16	2-25/32	2-1/2	0	4-1/8	1-15/16	3.5	3.4
16	H80P16	P1	5.63	5.126	4	1-3/4	2-3/16	1-15/16	0	3	1-3/8	1.3	3.5
16	H80Q16	Q1	5.63	5.126	4	2-11/16	2-25/32	2-1/2	0	4-1/8	1-15/16	3.5	4.6
17	H80P17	P1	5.95	5.442	4	1-3/4	2-3/16	1-15/16	0	3	1-3/8	1.3	3.8
17	H80Q17	Q1	5.95	5.442	4	2-11/16	2-25/32	2-1/2	0	4-1/8	1-15/16	3.5	5.3
18	H80P18	P1	6.27	5.759	4	1-3/4	2-3/16	1-15/16	0	3	1-3/8	1.3	4.4
18	H80Q18	Q1	6.27	5.759	4	2-11/16	2-25/32	2-1/2	0	4-1/8	1-15/16	3.5	6.0
19	H80P19	P1	6.59	6.076	4	1-3/4	2-3/16	1-15/16	0	3	1-3/8	1.3	4.9
19	H80Q19	Q1	6.59	6.076	4	2-11/16	2-25/32	2-1/2	0	4-1/8	1-15/16	3.5	6.5
20	H80Q20	Q1	6.91	6.392	4	2-11/16	2-25/32	2-1/2	0	4-1/8	1-15/16	3.5	6.9
21	H80Q21	Q1	7.24	6.710	4	2-11/16	2-25/32	2-1/2	0	4-1/8	1-15/16	3.5	7.4
22	H80Q22	Q1	7.56	7.027	4	2-11/16	2-25/32	2-1/2	0	4-1/8	1-15/16	3.5	8.0
23	H80Q23	Q1	7.88	7.344	4	2-11/16	2-25/32	2-1/2	0	4-1/8	1-15/16	3.5	8.5
24	H80Q24	Q1	8.20	7.661	4	2-11/16	2-25/32	2-1/2	0	4-1/8	1-15/16	3.5	9.3
25	H80Q25	Q1	8.52	7.979	4	2-11/16	2-25/32	2-1/2	0	4-1/8	1-15/16	3.5	9.9
26	H80Q26	Q1	8.84	8.296	4	2-11/16	2-25/32	2-1/2	0	4-1/8	1-15/16	3.5	10.4
27	H80Q27	Q1	9.16	8.614	4	2-11/16	2-25/32	2-1/2	0	4-1/8	1-15/16	3.5	10.9
28	H80Q28	Q1	9.48	8.931	4	2-11/16	2-25/32	2-1/2	0	4-1/8	1-15/16	3.5	11.5
29	H80Q29	Q1	9.80	9.249	4	2-11/16	2-25/32	2-1/2	0	4-1/8	1-15/16	3.5	12.5
30	H80Q30	Q1	10.11	9.567	4	2-11/16	2-25/32	2-1/2	0	4-1/8	1-15/16	3.5	13.0
31	80Q31	Q1	10.43	9.884	4	2-11/16	2-25/32	2-1/2	0	4-1/8	1-15/16	3.5	13.9
32	80Q32	Q1	10.75	10.202	4	2-11/16	2-25/32	2-1/2	0	4-1/8	1-15/16	3.5	14.8
33	80Q33	Q1	11.07	10.520	4	2-11/16	2-25/32	2-1/2	0	4-1/8	1-15/16	3.5	15.5
34	80Q34	Q1	11.39	10.838	4	2-11/16	2-25/32	2-1/2	0	4-1/8	1-15/16	3.5	16.3

Sprockets with "H" prefix have hardened teeth.

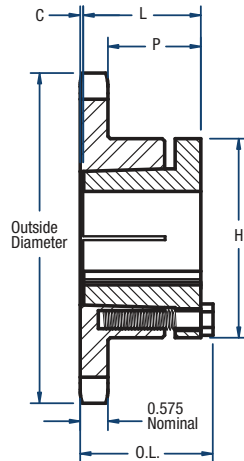
NOTE: Maximum bores shown will accommodate a standard keyseat and a setscrew over the keyseat. Slightly larger bores are possible with no keyseat, a shallow keyseat, or a setscrew at an angle to the keyseat.

80 Sprockets

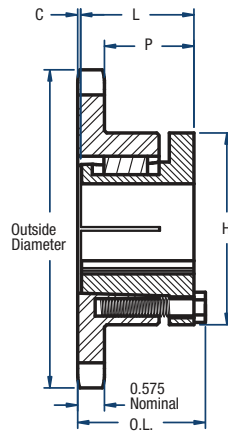
1" Pitch



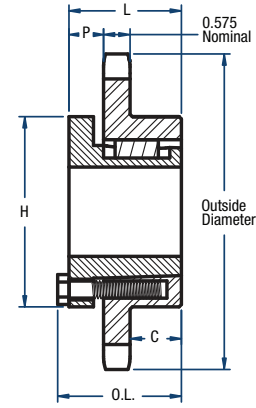
BLACKSTAR®



TYPE 3



TYPE 4



TYPE 5

Single-Split Taper Style (continued)

No. of Teeth	Catalog Number	Bushing	Diameters (in)		Type	Max. Bore	Dimensions (in)					Approx. Weight (lbs)	
			Outside Diameter	Pitch Diameter			OL	L	C	H	P	Bushing Only	Sprocket Only
35	80Q35	Q1	11.71	11.156	4	2 11/16	2 25/32	2 1/2	0	4 1/8	1 15/16	3.5	17.8
36	80Q36	Q1	12.03	11.474	4	2 11/16	2 25/32	2 1/2	0	4 1/8	1 15/16	3.5	18.1
36	80R36	R1	12.03	11.474	4	3 3/4	3 5/32	2 7/8	0	5 3/8	2 5/16	7.5	19.5
37	80Q37	Q1	12.35	11.792	4	2 11/16	2 25/32	2 1/2	0	4 1/8	1 15/16	3.5	18.5
38	80Q38	Q1	12.67	12.110	4	2 11/16	2 25/32	2 1/2	0	4 1/8	1 15/16	3.5	20.0
39	80R39	R1	12.99	12.428	4	3 3/4	3 5/32	2 7/8	0	5 3/8	2 5/16	7.5	22.8
40	80Q40	Q1	13.31	12.746	4	2 11/16	2 25/32	2 1/2	0	4 1/8	1 15/16	3.5	21.9
40	80R40	R1	13.31	12.746	4	3 3/4	3 5/32	2 7/8	0	5 3/8	2 5/16	7.5	23.4
41	80R41	R1	13.63	13.064	4	3 3/4	3 5/32	2 7/8	0	5 3/8	2 5/16	7.5	23.9
42	80Q42	Q1	13.94	13.382	4	2 11/16	2 25/32	2 1/2	0	4 1/8	1 15/16	3.5	23.8
42	80R42	R1	13.94	13.382	4	3 3/4	3 5/32	2 7/8	0	5 3/8	2 5/16	7.5	25.4
44	80R44	R1	14.58	14.018	4	3 3/4	3 5/32	2 7/8	0	5 3/8	2 5/16	7.5	27.2
45	80Q45	Q1	14.90	14.336	4	2 11/16	2 25/32	2 1/2	0	4 1/8	1 15/16	3.5	27.8
45	80R45	R1	14.90	14.336	4	3 3/4	3 5/32	2 7/8	0	5 3/8	2 5/16	7.5	28.5
47	80R47	R1	15.54	14.972	4	3 3/4	3 5/32	2 7/8	0	5 3/8	2 5/16	7.5	31.0
48	80Q48	Q1	15.86	15.290	4	2 11/16	2 25/32	2 1/2	0	4 1/8	1 15/16	3.5	30.8
48	80R48	R1	15.86	15.290	4	3 3/4	3 5/32	2 7/8	0	5 3/8	2 5/16	7.5	32.3
50	80R50	R1	16.50	15.926	4	3 3/4	3 5/32	2 7/8	0	5 3/8	2 5/16	7.5	35.1
54	80Q54	Q1	17.77	17.198	4	2 11/16	2 25/32	2 1/2	0	4 1/8	1 15/16	3.5	38.5
54	80R54	R1	17.77	17.198	4	3 3/4	3 5/32	2 7/8	0	5 3/8	2 5/16	7.5	40.8
56	80R56	R1	18.41	17.835	4	3 3/4	3 5/32	2 7/8	0	5 3/8	2 5/16	7.5	44.0
60	80Q60	Q1	19.68	19.107	4	2 11/16	2 25/32	2 1/2	0	4 1/8	1 15/16	3.5	46.8
60	80R60	R1	19.68	19.107	4	3 3/4	3 5/32	2 7/8	0	5 3/8	2 5/16	7.5	47.3
70	80Q70	Q1	22.87	22.289	4	2 11/16	2 25/32	2 1/2	0	4 1/8	2 5/16	3.5	60.0
70	80R70	R1	22.87	22.289	4	3 3/4	3 5/32	2 7/8	0	5 3/8	2 5/16	7.5	63.5
72	80Q72	Q1	23.50	22.926	4	2 11/16	2 25/32	2 1/2	0	4 1/8	2 5/16	3.5	67.5
72	80R72	R1	23.50	22.926	5	3 3/4	3 5/32	2 7/8	1 7/16	5 3/8	7/8	7.5	69.4
80	80R80	R1	26.05	25.471	5	3 3/4	3 5/32	2 7/8	1 7/16	5 3/8	7/8	7.5	85.0
84	80R84	R1	27.33	26.744	5	3 3/4	3 5/32	2 7/8	1 7/16	5 3/8	7/8	7.5	90.0
96	80R96	R1	31.15	30.563	5	3 3/4	3 5/32	2 7/8	1 7/16	5 3/8	7/8	7.5	110.0
112	80S112	S1	36.24	35.655	5	4 1/4	4 3/4	4 3/8	2 3/4	6 3/8	1 1/8	13.5	165.0

Sprockets with "H" prefix have hardened teeth.

NOTE: Maximum bores shown will accommodate a standard keyseat and a setscrew over the keyseat. Slightly larger bores are possible with no keyseat, a shallow keyseat, or a setscrew at an angle to the keyseat.