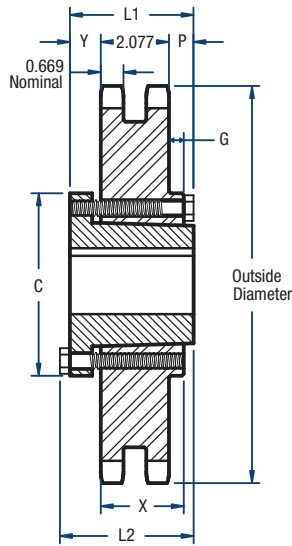
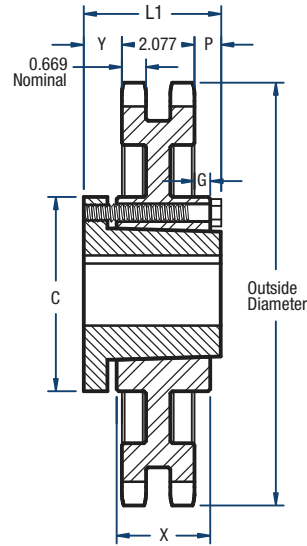


D100 Sprockets

1 1/4" Pitch



TYPE C2



TYPE C6

Double- QD Style

No. of Teeth	Catalog Number	Bushing	Diameters (in)		Type	Max. Bore	Dimensions (in)							Approx. Weight (lbs)	
			Outside	Pitch			L1	L2	C	Y	P	G	X	Bushing Only	Sprocket Only
35	D100F35	F	14.64	13.945	C2	3-15/16	3-5/8	4	6-5/8	1	35/64	27/64	2-1/2	11.5	73.0
45	D100F45	F	18.63	17.920	C2	3-15/16	3-5/8	4	6-5/8	1	35/64	27/64	2-1/2	11.5	81.0
60	D100J60	J	24.60	23.884	C6	4-7/16	4-1/2	5	7-1/4	1-7/32	1-13/64	1-3/32	3-3/16	18.0	133.0
70	D100J70	J	28.58	27.861	C6	4-7/16	4-1/2	5	7-1/4	1-7/32	1-13/64	1-3/32	3-3/16	18.0	161.0
80	D100J80	J	32.57	31.839	C6	4-7/16	4-1/2	5	7-1/4	1-7/32	1-13/64	1-3/32	3-3/16	18.0	196.0

NOTE: Maximum bores shown will accommodate a standard keyseat and a setscrew over the keyseat. Slightly larger bores are possible with no keyseat, a shallow keyseat, or a setscrew at an angle to the keyseat.