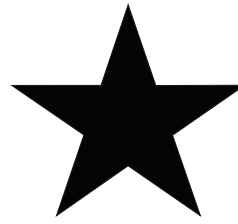
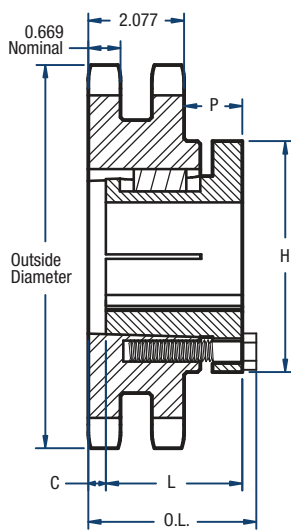


# D100 Sprockets

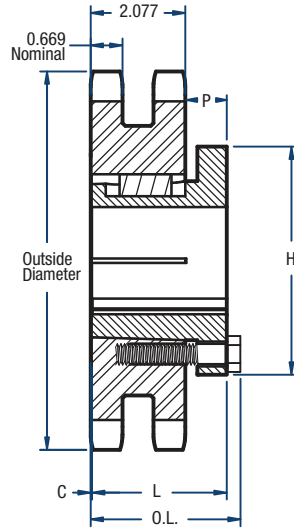
## 1 1/4" Pitch



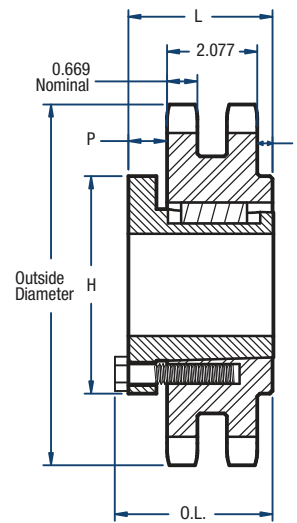
# BLACKSTAR®



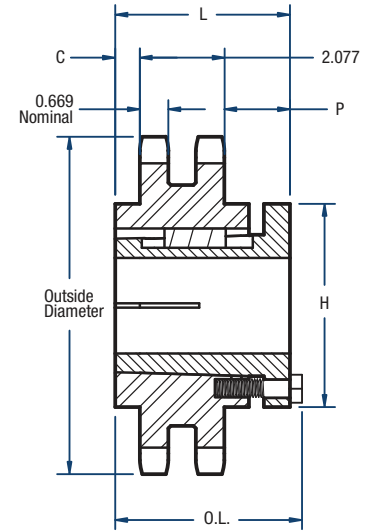
**TYPE 12**



**TYPE 14**



**TYPE 15**



**TYPE 18**

### Double-Split Taper Style

No. of Teeth	Catalog Number	Bushing	Diameters (in)		Type	Max. Bore	Dimensions (in)					Approx. Weight (lbs)	
			Outside	Pitch			OL	L	C	H	P	Bushing Only	Sprocket Only
11	D100P11H	P1	5.01	4.438	14	1-3/4	2-15/16	1-15/16	3/4	3	5/8	1.3	4.7
12	D100Q12H	Q2	5.42	4.830	12	2-5/8	4-7/32	3-1/2	7/16	4-1/8	1-55/64	4.5	5.9
13	D100Q13H	Q2	5.82	5.224	12	2-5/8	4-7/32	3-1/2	7/16	4-1/8	1-55/64	4.5	7.9
14	D100Q14H	Q1	6.23	5.618	14	2-11/16	3-3/32	2-1/2	5/16	4-1/8	3/4	3.5	7.4
15	D100Q15H	Q1	6.63	6.013	14	2-11/16	3-3/32	2-1/2	5/16	4-1/8	3/4	3.5	9.1
16	D100Q16H	Q1	7.03	6.408	14	2-11/16	3-3/32	2-1/2	5/16	4-1/8	3/4	3.5	10.9
17	D100R17H	R1	7.44	6.803	14	3-3/4	3-7/32	2-7/8	1/16	5-3/8	7/8	7.5	10.0
18	D100R18H	R1	7.84	7.199	14	3-3/4	3-7/32	2-7/8	1/16	5-3/8	7/8	7.5	12.3
19	D100R19H	R1	8.24	7.595	14	3-3/4	3-7/32	2-7/8	1/16	5-3/8	7/8	7.5	14.9
20	D100R20H	R1	8.64	7.990	14	3-3/4	3-7/32	2-7/8	1/16	5-3/8	7/8	7.5	17.4
21	D100R21H	R1	9.04	8.388	14	3-3/4	3-7/32	2-7/8	1/16	5-3/8	7/8	7.5	20.3
22	D100R22H	R1	9.44	8.784	14	3-3/4	3-7/32	2-7/8	1/16	5-3/8	7/8	7.5	22.8
24	D100R24H	R1	10.25	9.576	14	3-3/4	3-7/32	2-7/8	1/16	5-3/8	7/8	7.5	29.5
35	D100R35	R1	14.64	13.945	14	3-3/4	3-7/32	2-7/8	1/16	5-3/8	7/8	7.5	76.8
45	D100S45	S1	18.63	17.920	15	4-1/4	4-3/4	4-3/8	1-15/64	6-3/8	1-1/16	13.5	138.0
60	D100S60	S1	24.60	23.884	15	4-1/4	4-3/4	4-3/8	1-15/64	6-3/8	1-1/16	13.5	251.0
70	D100S70	S1	28.58	27.861	18	4-1/4	7-1/8	6-3/4	2-1/4	6-3/8	2-7/16	13.5	358.0
80	D100S80	S1	32.57	31.839	18	4-1/4	7-1/8	6-3/4	2-1/4	6-3/8	2-7/16	13.5	431.0

Sprockets with "H" suffix have hardened teeth.

**NOTE:** Maximum bores shown will accommodate a standard keyseat and a setscrew over the keyseat. Slightly larger bores are possible with no keyseat, a shallow keyseat, or a setscrew at an angle to the keyseat.