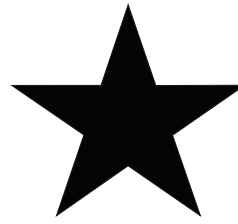
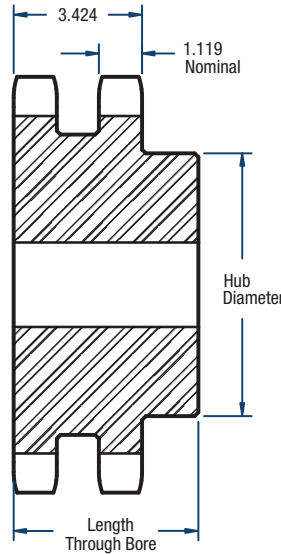


# D160 Sprockets

## 2" Pitch



# BLACKSTAR®



**TYPE B**

### Double- Type B

No. of Teeth	Catalog Number	Diameters (in)		Bore (in)		Hub (in)		Approx. Weight (lbs)
		Outside	Pitch	Minimum	Maximum	Diameter	Length Through Bore	
13	D160B13H	9.31	8.358	2	4	6	4-3/4	48.0
14	D160B14H	9.96	8.988	2	4-3/4	6-3/4	4-3/4	58.0
15	D160B15H	10.61	9.620	2	5-1/4	7	4-3/4	68.0
16	D160B16H	11.25	10.252	2	5-1/4	7	4-3/4	75.0
17	D160B17H	11.90	10.844	2	5-1/4	7	4-3/4	91.0
18	D160B18H	12.54	11.518	2	5-1/4	7	4-3/4	96.0
19	D160B19H	13.19	12.152	2	5-1/4	7	4-3/4	107.0
20	D160B20H	13.83	12.784	2	5-1/4	7	4-3/4	119.0
21	D160B21H	14.47	13.420	2	5-3/8	7-1/2	4-3/4	130.0
22	D160B22H	15.11	14.054	2	5-3/8	7-1/2	4-3/4	141.0
23	D160B23H	15.75	14.688	2	5-3/8	7-1/2	4-3/4	157.0
24	D160B24H	16.39	15.322	2	5-3/8	7-1/2	4-3/4	171.0
25	D160B25H	17.03	15.958	2	5-3/8	7-1/2	4-3/4	187.0
26	D160B26H	17.67	16.592	2	5-3/8	7-1/2	4-3/4	201.0

**NOTE:** Maximum bores shown will accommodate a standard keyseat and a setscrew over the keyseat. Slightly larger bores are possible with no keyseat, a shallow keyseat, or a setscrew at an angle to the keyseat.