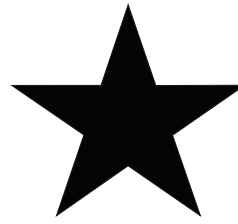
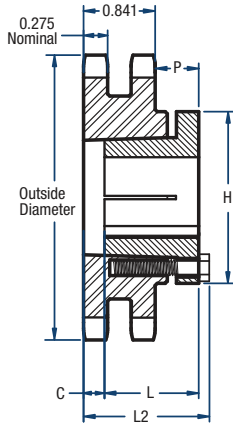


D40 Sprockets

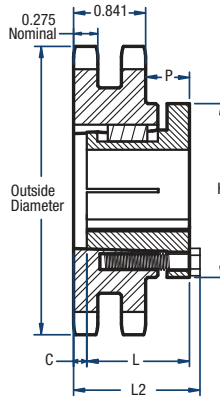
1/2" Pitch



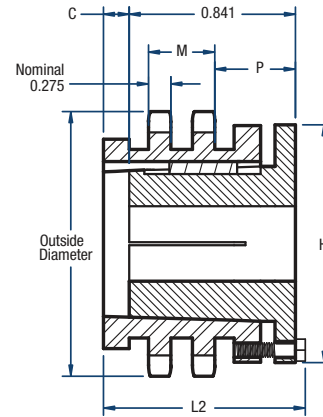
BLACKSTAR®



TYPE 11



TYPE 12



TYPE 16

Double-Split Taper Style

No. of Teeth	Catalog Number	Bushing	Diameters (in)		Type	Max. Bore	Dimensions (in)					Approx. Weight (lbs)	
			Outside Diameter	Pitch Diameter			L2	L	C	H	P	Bushing Only	Sprocket Only
15	D40H15H	H	2.65	2.405	11	1-1/2	2-5/32	1-1/4	23/32	2-1/2	1-1/8	0.8	0.9
16	D40H16H	H	2.81	2.563	11	1-1/2	2-5/32	1-1/4	23/32	2-1/2	1-1/8	0.8	1.0
17	D40H17H	H	2.98	2.721	11	1-1/2	2-5/32	1-1/4	23/32	2-1/2	1-1/8	0.8	1.1
18	D40P18H	P1	3.14	2.879	16	1-3/4	3-3/16	1-15/16	1	3	1-3/8	1.3	1.8
19	D40P19H	P1	3.30	3.038	12	1-3/4	2-15/32	1-15/16	9/32	3	1-3/8	1.3	1.4
20	D40P20H	P1	3.46	3.196	12	1-3/4	2-13/32	1-15/16	7/32	3	1-3/8	1.3	1.6
21	D40P21H	P1	3.62	3.355	12	1-3/4	2-13/32	1-15/16	7/32	3	1-3/8	1.3	1.8
22	D40P22H	P1	3.78	3.513	12	1-3/4	2-13/32	1-15/16	7/32	3	1-3/8	1.3	2.0
23	D40P23H	P1	3.94	3.672	12	1-3/4	2-3/16	1-15/16	0	3	1-3/32	1.3	2.0
24	D40P24H	P1	4.10	3.831	12	1-3/4	2-3/16	1-15/16	0	3	1-3/32	1.3	2.2
25	D40P25H	P1	4.26	3.989	12	1-3/4	2-3/16	1-15/16	0	3	1-3/32	1.3	2.5
26	D40P26H	P1	4.42	4.148	12	1-3/4	2-3/16	1-15/16	0	3	1-3/32	1.3	2.7
28	D40P28H	P1	4.74	4.466	12	1-3/4	2-3/16	1-15/16	0	3	1-3/32	1.3	3.1
30	D40Q30H	Q1	5.06	4.783	12	2-11/16	2-25/32	2-1/2	0	4-1/8	1-21/32	3.5	4.2
32	D40Q32	Q1	5.38	5.101	12	2-11/16	2-25/32	2-1/2	0	4-1/8	1-21/32	3.5	5.3
35	D40Q35	Q1	5.86	5.578	12	2-11/16	2-25/32	2-1/2	0	4-1/8	1-21/32	3.5	6.1
36	D40Q36	Q1	6.02	5.737	12	2-11/16	2-25/32	2-1/2	0	4-1/8	1-21/32	3.5	6.5
40	D40Q40	Q1	6.65	6.373	12	2-11/16	2-25/32	2-1/2	0	4-1/8	1-21/32	3.5	7.9
42	D40Q42	Q1	6.97	6.691	12	2-11/16	2-25/32	2-1/2	0	4-1/8	1-21/32	3.5	8.9
45	D40Q45	Q1	7.45	7.168	12	2-11/16	2-25/32	2-1/2	0	4-1/8	1-21/32	3.5	10.1
48	D40Q48	Q1	7.93	7.645	12	2-11/16	2-25/32	2-1/2	0	4-1/8	1-21/32	3.5	11.8
52	D40Q52	Q1	8.57	8.281	12	2-11/16	2-25/32	2-1/2	0	4-1/8	1-21/32	3.5	12.6
54	D40Q54	Q1	8.89	8.599	12	2-11/16	2-25/32	2-1/2	0	4-1/8	1-21/32	3.5	14.3
60	D40Q60	Q1	9.84	9.554	12	2-11/16	2-25/32	2-1/2	0	4-1/8	1-21/32	3.5	17.4
68	D40Q68	Q1	11.12	10.826	12	2-11/16	2-25/32	2-1/2	0	4-1/8	1-21/32	3.5	21.5
72	D40Q72	Q1	11.75	11.463	12	2-11/16	2-25/32	2-1/2	0	4-1/8	1-21/32	3.5	25.0
76	D40Q76	Q1	12.39	12.099	12	2-11/16	2-25/32	2-1/2	0	4-1/8	1-21/32	3.5	26.9
84	D40Q84	Q1	13.66	13.372	12	2-11/16	2-25/32	2-1/2	0	4-1/8	1-21/32	3.5	34.1
95	D40Q95	Q1	15.41	15.122	12	2-11/16	2-25/32	2-1/2	0	4-1/8	1-21/32	3.5	42.0
96	D40Q96	Q1	15.57	15.282	12	2-11/16	2-25/32	2-1/2	0	4-1/8	1-21/32	3.5	44.1
102	D40Q102	Q1	16.53	16.236	12	2-11/16	2-25/32	2-1/2	0	4-1/8	1-21/32	3.5	48.5
112	D40Q112	Q1	18.12	17.827	12	2-11/16	2-25/32	2-1/2	0	4-1/8	1-21/32	3.5	61.0

Sprockets with "H" suffix have hardened teeth.

NOTE: Maximum bores shown will accommodate a standard keyseat and a setscrew over the keyseat. Slightly larger bores are possible with no keyseat, a shallow keyseat, or a setscrew at an angle to the keyseat.