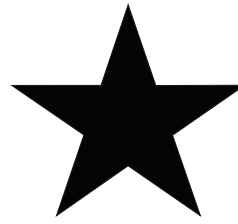
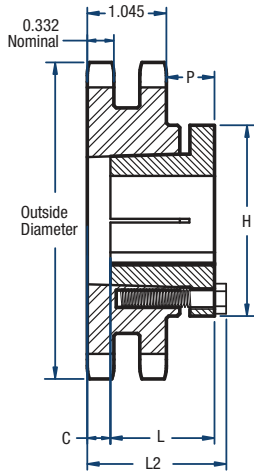


# D50 Sprockets

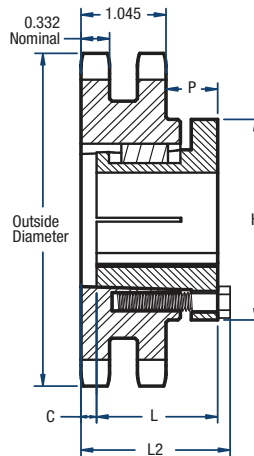
## 5/8" Pitch



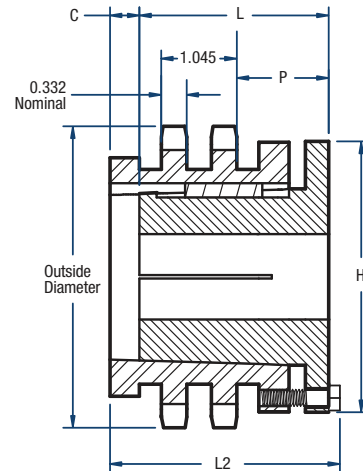
# BLACKSTAR®



**TYPE 11**



**TYPE 12**



**TYPE 16**

### Double-Split Taper Style

No. of Teeth	Catalog Number	Bushing	Diameters (in)		Type	Max. Bore	Dimensions (in)					Approx. Weight (lbs)	
			Outside	Pitch			L2	L	C	H	P	Bushing Only	Sprocket Only
14	D50H14H	H	3.11	2.809	11	1-1/2	2-5/16	1-1/4	7/8	2-1/2	1-3/32	0.8	1.2
15	D50P15H	P1	3.32	3.006	16	1-3/4	3-7/16	1-15/16	1-1/4	3	1-13/32	1.3	2.0
16	D50P16H	P1	3.52	3.204	12	1-3/4	2-11/16	1-15/16	1/2	3	1-13/32	1.3	1.6
17	D50P17H	P1	3.72	3.401	12	1-3/4	2-11/16	1-15/16	1/2	3	1-13/32	1.3	2.1
18	D50P18H	P1	3.92	3.599	12	1-3/4	2-11/16	1-15/16	1/2	3	1-13/32	1.3	2.5
19	D50P19H	P1	4.12	3.798	12	1-3/4	2-3/16	1-15/16	0	3	29/32	1.3	2.0
20	D50P20H	P1	4.32	3.995	12	1-3/4	2-3/16	1-15/16	0	3	29/32	1.3	2.5
21	D50P21H	P1	4.52	4.194	12	1-3/4	2-3/16	1-15/16	0	3	29/32	1.3	2.8
22	D50P22H	P1	4.72	4.392	12	1-3/4	2-3/16	1-15/16	0	3	29/32	1.3	3.2
23	D50P23H	P1	4.92	4.590	12	1-3/4	2-3/16	1-15/16	0	3	29/32	1.3	3.6
24	D50Q24H	Q1	5.12	4.788	12	2-11/16	2-25/32	2-1/2	0	4-1/8	1-15/32	3.5	4.0
25	D50Q25H	Q1	5.32	4.987	12	2-11/16	2-25/32	2-1/2	0	4-1/8	1-15/32	3.5	4.5
26	D50Q26H	Q1	5.52	5.185	12	2-11/16	2-25/32	2-1/2	0	4-1/8	1-15/32	3.5	5.3
27	D50Q27H	Q1	5.72	5.384	12	2-11/16	2-25/32	2-1/2	0	4-1/8	1-15/32	3.5	5.9
28	D50Q28H	Q1	5.92	5.582	12	2-11/16	2-25/32	2-1/2	0	4-1/8	1-15/32	3.5	6.3
30	D50Q30H	Q1	6.32	5.979	12	2-11/16	2-25/32	2-1/2	0	4-1/8	1-15/32	3.5	7.5
32	D50Q32	Q1	6.72	6.376	12	2-11/16	2-25/32	2-1/2	0	4-1/8	1-15/32	3.5	8.5
35	D50Q35	Q1	7.32	6.973	12	2-11/16	2-25/32	2-1/2	0	4-1/8	1-15/32	3.5	10.4
36	D50Q36	Q1	7.52	7.171	12	2-11/16	2-25/32	2-1/2	0	4-1/8	1-15/32	3.5	11.0
40	D50Q40	Q1	8.32	7.966	12	2-11/16	2-25/32	2-1/2	0	4-1/8	1-15/32	3.5	13.6
42	D50Q42	Q1	8.72	8.364	12	2-11/16	2-25/32	2-1/2	0	4-1/8	1-15/32	3.5	15.0
45	D50Q45	Q1	9.31	8.960	12	2-11/16	2-25/32	2-1/2	0	4-1/8	1-15/32	3.5	17.5
48	D50Q48	Q1	9.91	9.556	12	2-11/16	2-25/32	2-1/2	0	4-1/8	1-15/32	3.5	20.4
52	D50Q52	Q1	10.71	10.351	12	2-11/16	2-25/32	2-1/2	0	4-1/8	1-15/32	3.5	23.3
54	D50Q54	Q1	11.11	10.749	12	2-11/16	2-25/32	2-1/2	0	4-1/8	1-15/32	3.5	23.3
60	D50Q60	Q1	12.30	11.942	12	2-11/16	2-25/32	2-1/2	0	4-1/8	1-15/32	3.5	25.5
72	D50Q72	Q1	14.69	14.329	12	2-11/16	2-25/32	2-1/2	0	4-1/8	1-15/32	3.5	43.1
76	D50Q76	Q1	15.49	15.124	12	2-11/16	2-25/32	2-1/2	0	4-1/8	1-15/32	3.5	46.0
84	D50Q84	Q1	17.08	16.715	12	2-11/16	2-25/32	2-1/2	0	4-1/8	1-15/32	3.5	56.7
95	D50R95	R1	19.27	18.903	12	3-3/4	3-5/32	2-7/8	0	5-3/8	2-3/32	7.5	72.3
96	D50R96	R1	19.47	19.102	12	3-3/4	3-5/32	2-7/8	0	5-3/8	2-3/32	7.5	80.7
102	D50R102	R1	20.66	20.296	12	3-3/4	3-5/32	2-7/8	0	5-3/8	2-3/32	7.5	84.5
112	D50R112	R1	22.65	22.284	12	3-3/4	3-5/32	2-7/8	0	5-3/8	2-3/32	7.5	93.2

**NOTE:** Maximum bores shown will accommodate a standard keyseat and a setscrew over the keyseat. Slightly larger bores are possible with no keyseat, a shallow keyseat, or a setscrew at an angle to the keyseat.