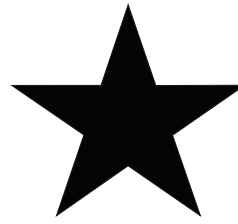
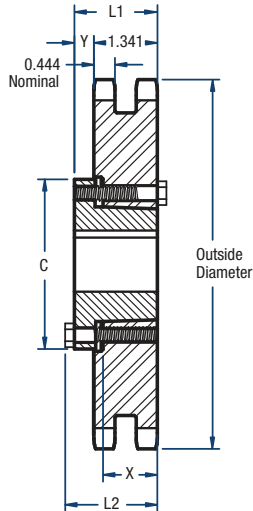


# D60 Sprockets

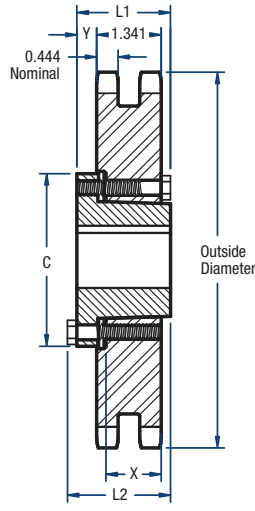
## 3/4" Pitch



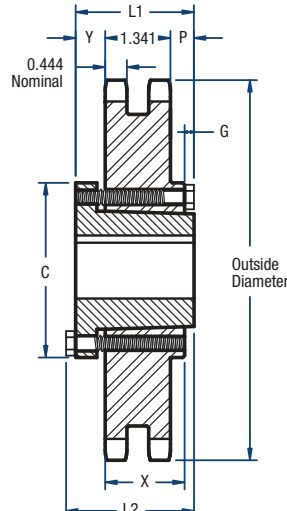
# BLACKSTAR®



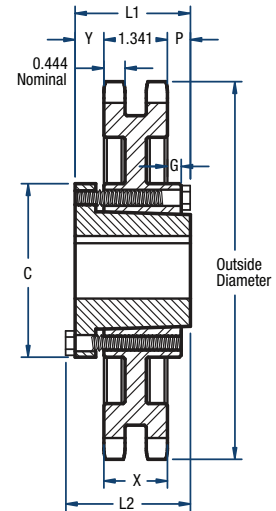
TYPE B



TYPE C1



TYPE C2



TYPE C4

### Double- QD Style

No. of Teeth	Catalog Number	Bushing	Diameters (in)		Type	Max. Bore	Dimensions (in)						Approx. Weight (lbs)		
			Outside	Pitch			L1	L2	C	Y	P	G	X	Bushing Hub	Sprocket Only
14	D60SH14H	SH	3.74	3.371	B	1-5/8	1-5/16	2-1/4	2-11/16	1/2	—	—	3/4	1.0	1.5
22	D60SDS22H	SDS	5.67	5.270	B	2	1-5/16	1-21/32	3-3/16	1/2	—	—	3/4	1.0	4.4
36	D60SF36	SF	9.02	8.606	C1	2-15/16	2-1/16	2-15/32	4-5/8	3/4	—	—	1-1/4	3.0	16.3
42	D60E42	E	10.46	10.037	C2	3-1/2	2-3/4	3-1/4	6	7/8	13/32	9/32	1-5/8	10.0	24.0
45	D60E45	E	11.18	10.752	C2	3-1/2	2-3/4	3-1/4	6	7/8	13/32	9/32	1-5/8	10.0	28.4
52	D60E52	E	12.85	12.422	C2	3-1/2	2-3/4	3-1/4	6	7/8	13/32	9/32	1-5/8	10.0	39.5
60	D60E60	E	14.76	14.330	C2	3-1/2	2-3/4	3-1/4	6	7/8	13/32	9/32	1-5/8	10.0	53.7
68	D60E68	E	16.67	16.240	C4	3-1/2	2-3/4	3-1/4	6	7/8	13/32	9/32	1-5/8	10.0	44.3
76	D60E76	E	18.58	18.149	C4	3-1/2	2-3/4	3-1/4	6	7/8	13/32	9/32	1-5/8	10.0	51.5
95	D60E95	E	23.12	22.683	C4	3-1/2	2-3/4	3-1/4	6	7/8	13/32	9/32	1-5/8	10.0	73.0

Sprockets with "H" suffix have hardened teeth.

**NOTE:** Maximum bores shown will accommodate a standard keyseat and a setscrew over the keyseat. Slightly larger bores are possible with no keyseat, a shallow keyseat, or a setscrew at an angle to the keyseat.