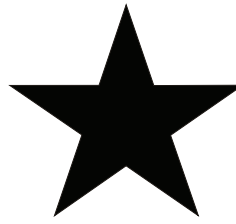
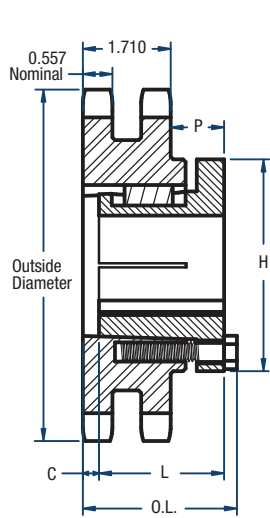


D80 Sprockets

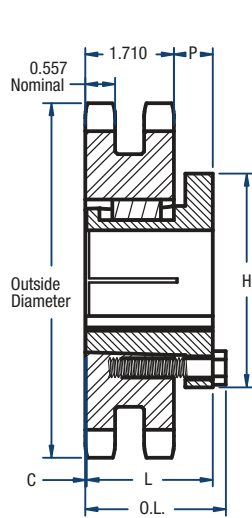
1" Pitch



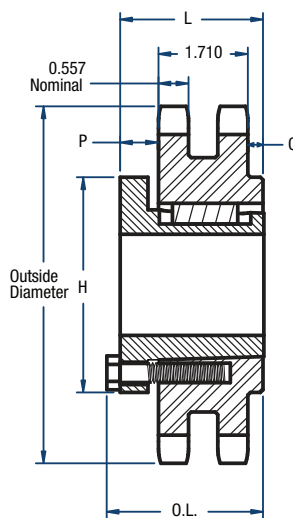
BLACKSTAR®



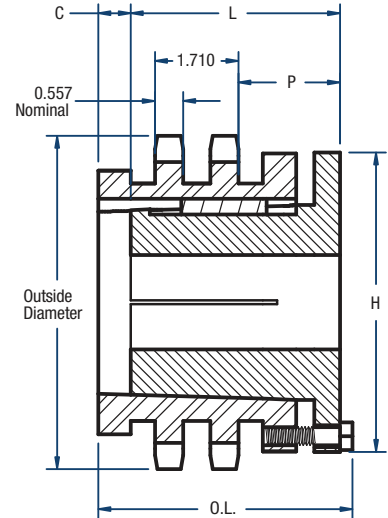
TYPE 12



TYPE 13



TYPE 15



TYPE 16

Double-Split Taper Style

No. of Teeth	Catalog Number	Bushing	Diameters (in)		Type	Max. Bore	Dimensions (in)					Approx. Weight (lbs)	
			Outside Diameter	Pitch Diameter			OL	L	C	H	P	Bushing Only	Sprocket Only
13	D80P13H	P1	4.66	4.179	13	1-3/4	2-19/32	1-15/16	13/32	3	5/8	1.3	3.6
14	D80Q14H	Q2	4.98	4.494	16	2-5/8	4-5/8	3-1/2	27/32	4-1/8	1-3/4	4.5	5.4
15	D80Q15H	Q2	5.30	4.810	12	2-5/8	3-25/32	3-1/2	0	4-1/8	1-3/4	4.5	5.4
16	D80Q16H	Q1	5.63	5.126	13	2-11/16	2-25/32	2-1/2	0	4-1/8	3/4	3.5	4.8
17	D80Q17H	Q1	5.95	5.442	13	2-11/16	2-25/32	2-1/2	0	4-1/8	3/4	3.5	6.0
18	D80Q18H	Q1	6.27	5.759	13	2-11/16	2-25/32	2-1/2	0	4-1/8	3/4	3.5	7.3
19	D80Q19H	Q1	6.59	6.076	13	2-11/16	2-25/32	2-1/2	0	4-1/8	3/4	3.5	8.5
20	D80R20H	R1	6.91	6.392	12	3-3/4	3-5/32	2-7/8	0	5-3/8	1-5/32	7.5	7.8
21	D80R21H	R1	7.24	6.710	12	3-3/4	3-5/32	2-7/8	0	5-3/8	1-5/32	7.5	9.4
22	D80R22H	R1	7.56	7.027	12	3-3/4	3-5/32	2-7/8	0	5-3/8	1-5/32	7.5	10.8
23	D80R23H	R1	7.88	7.344	12	3-3/4	3-5/32	2-7/8	0	5-3/8	1-5/32	7.5	12.3
24	D80R24H	R1	8.20	7.661	12	3-3/4	3-5/32	2-7/8	0	5-3/8	1-5/32	7.5	14.1
25	D80R25H	R1	8.52	7.979	12	3-3/4	3-5/32	2-7/8	0	5-3/8	1-5/32	7.5	15.8
26	D80R26H	R1	8.84	8.296	12	3-3/4	3-5/32	2-7/8	0	5-3/8	1-5/32	7.5	18.1
27	D80R27H	R1	9.16	8.614	12	3-3/4	3-5/32	2-7/8	0	5-3/8	1-5/32	7.5	20.4
28	D80R28H	R1	9.48	8.931	12	3-3/4	3-5/32	2-7/8	0	5-3/8	1-5/32	7.5	22.7
29	D80R29H	R1	9.80	9.249	12	3-3/4	3-5/32	2-7/8	0	5-3/8	1-5/32	7.5	24.7
30	D80R30H	R1	10.11	9.567	12	3-3/4	3-5/32	2-7/8	0	5-3/8	1-5/32	7.5	26.8
36	D80R36	R1	12.03	11.474	12	3-3/4	3-5/32	2-7/8	0	5-3/8	1-5/32	7.5	41.6
42	D80R42	R1	13.94	13.382	12	3-3/4	3-5/32	2-7/8	0	5-3/8	1-5/32	7.5	58.0
45	D80R45	R1	14.90	14.336	12	3-3/4	3-5/32	2-7/8	0	5-3/8	1-5/32	7.5	68.0
48	D80R48	R2	15.86	15.290	15	3-5/8	5-5/32	4-7/8	2-9/32	5-3/8	7/8	11.0	86.0
52	D80R52	R2	17.13	16.562	15	3-5/8	5-5/32	4-7/8	2-9/32	5-3/8	7/8	11.0	103.0
54	D80R54	R2	17.77	17.198	15	3-5/8	5-5/32	4-7/8	2-9/32	5-3/8	7/8	11.0	111.0
60	D80R60	R2	19.68	19.107	15	3-5/8	5-5/32	4-7/8	2-9/32	5-3/8	7/8	11.0	135.0
68	D80R68	R2	22.23	21.653	15	3-5/8	5-5/32	4-7/8	2-9/32	5-3/8	7/8	11.0	176.0
72	D80R72	R2	23.50	22.926	15	3-5/8	5-5/32	4-7/8	2-9/32	5-3/8	7/8	11.0	198.0
76	D80OU76	U0	24.78	24.198	15	5-1/2	5-23/32	5-1/4	2-1/32	8-3/8	1-1/2	30.0	219.0
95	D80OU95	U0	30.83	30.245	15	5-1/2	5-23/32	5-1/4	2-1/32	8-3/8	1-1/2	30.0	342.0

NOTE: Maximum bores shown will accommodate a standard keyseat and a setscrew over the keyseat. Slightly larger bores are possible with no keyseat, a shallow keyseat, or a setscrew at an angle to the keyseat.