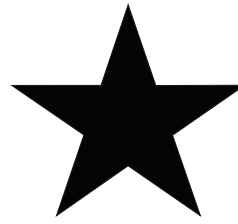
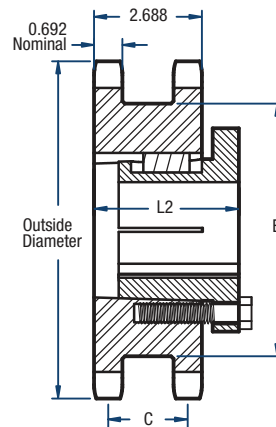


DS100 Sprockets

1 1/4" Pitch



BLACKSTAR[®]



TYPE B

Double Single- Split Taper Style

No. of Teeth	Catalog Number	Bushing Size	Diameters (in)		Type	Bore (in)		Dimensions (in)				Approx. Weight (lbs)	
			Outside	Pitch		Min.	Max.	L1	C	E	L2	Bushing Only	Sprocket Only
17	DS100R17H	R1	7.44	6.803	B	1-1/8	3-3/4	2-11/16	2	5-13/32	3-27/32	19.5	12.5
19	DS100R19H	R1	8.24	7.595	B	1-1/8	3-3/4	2-11/16	2	6-13/64	3-27/32	19.5	18.8
21	DS100R21H	R1	9.04	8.388	B	1-1/8	3-3/4	2-11/16	2	7	3-27/32	19.5	23.1

Sprockets with "H" prefix have hardened teeth.

NOTE: Maximum bores shown will accommodate a standard keyseat and a setscrew over the keyseat. Slightly larger bores are possible with no keyseat, a shallow keyseat, or a setscrew at an angle to the keyseat.