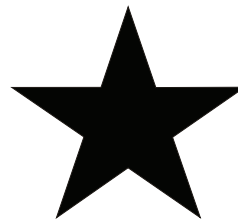
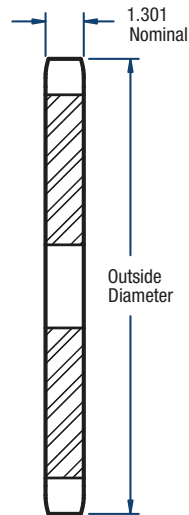


180 Sprockets

2 1/4" Pitch



BLACKSTAR[®]



TYPE A

Single- Type A

No. of Teeth	Catalog Number	Diameters (in)		Stock Bore (in)	Approx. Weight (lbs)
		Outside	Pitch		
11	H180A11	9.01	7.986	1-1/2	14.0
12	H180A12	9.75	8.693	1-1/2	16.0
13	H180A13	10.48	9.402	1-1/2	20.0
14	H180A14	11.21	10.112	1-1/2	24.0
15	H180A15	11.93	10.822	1-1/2	28.0
16	H180A16	12.66	11.533	1-1/2	32.0
17	H180A17	13.39	12.245	1-1/2	37.0
18	H180A18	14.11	12.957	1-1/2	43.0
19	H180A19	14.83	13.670	1-1/2	47.0
20	H180A20	15.56	14.383	1-1/2	53.0
21	H180A21	16.28	15.096	1-1/2	57.0
22	H180A22	17.00	15.810	1-1/2	62.0
23	H180A23	17.72	16.524	1-1/2	69.0
24	H180A24	18.44	17.238	1-1/2	77.0
25	H180A25	19.16	17.952	1-1/2	84.0
28	H180A28	21.32	20.096	1-1/2	104.0
30	H180A30	22.76	21.525	1-1/2	120.0
35	180A35	26.35	25.101	1-1/2	172.0
40	180A40	29.94	28.677	1-1/2	229.0
45	180A45	33.53	32.255	1-1/2	284.0
54	180A54	39.98	38.696	1-1/2	420.0
60	180A60	44.28	42.991	1-1/2	505.0

NOTE: Maximum bores shown will accommodate a standard keyseat and a setscrew over the keyseat. Slightly larger bores are possible with no keyseat, a shallow keyseat, or a setscrew at an angle to the keyseat.