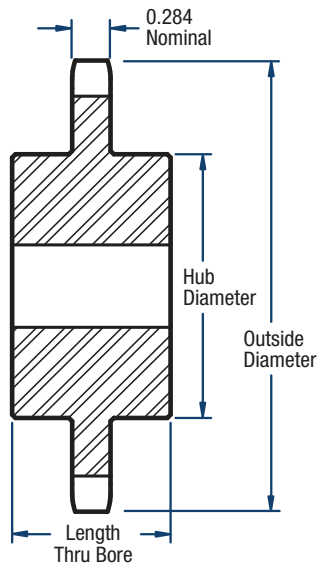


# 40 Sprockets

## 1/2" Pitch



# BLACKSTAR®



**TYPE C**

### Single- Type C

No. of Teeth	Catalog Number	Diameters (in)		Bore (in)		Hub (in)		Approx. Weight (lbs)
		Outside Diameter	Pitch Diameter	Stock	Recommended Max.	Diameter	Length Through Bore	
12	H40C12	2.17	1.932	1/2	1	1-39/64*	1-1/2	0.75
13	H40C13	2.33	2.089	1/2	1-1/16	1-3/4	1-1/2	0.94
14	H40C14	2.49	2.247	1/2	1-1/8	1-11/16	1-1/2	0.91
15	H40C15	2.65	2.405	1/2	1-1/4	1-7/8	1-1/2	1.19
16	H40C16	2.81	2.563	1/2	1-3/8	2	1-1/2	1.34
17	H40C17	2.98	2.721	5/8	1-7/16	2-1/8	1-1/2	1.50
18	H40C18	3.14	2.879	5/8	1-1/2	2-5/16	1-1/2	1.80

\*Has a recessed groove in the hub for chain clearance.  
Sprockets with "H" prefix have hardened teeth.

**NOTE:** Maximum bores shown will accommodate a standard keyseat and a setscrew over the keyseat. Slightly larger bores are possible with no keyseat, a shallow keyseat, or a setscrew at an angle to the keyseat.