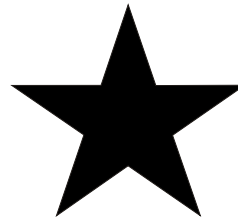
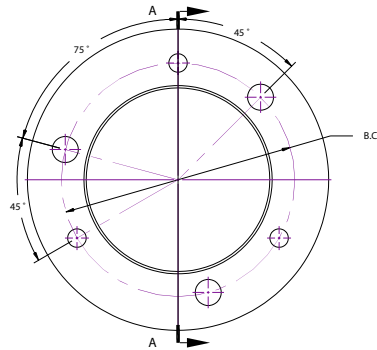
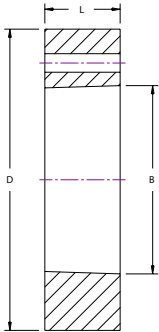


# Hubs

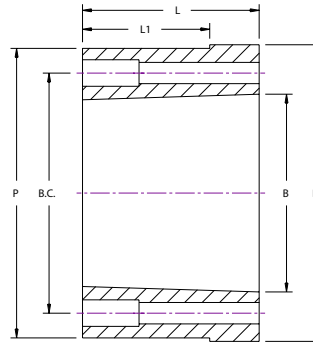
## QD STYLE



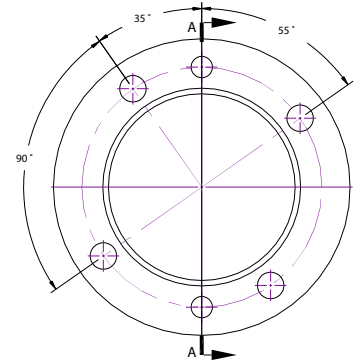
BLACKSTAR®



Type 1



Type 2

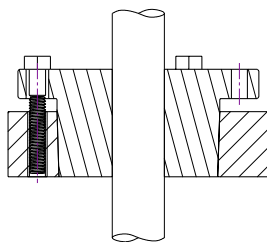


Catalog Number	Dimensions (in)						Type Drilling	Weight (lbs)	Mounting
	D*	L	B	P	L1	BC			
JA-A	2 1/4	9/16	1.375	—	—	1 21/32	1	0.4	STD or Reverse Mount
SH-A	3	13/16	1.871	—	—	2 1/4	1	1	
SDS-A	3 1/2	3/4	2.188	—	—	2 11/16	1	1.25	
SK-A	4 3/8	1 1/4	2.813	—	—	3 5/16	1	3	
SF-A	5	1 1/4	3.125	—	—	3 7/8	1	4	
E-A	6 1/4	1 5/8	3.832	—	—	5	1	9	
F-A	7	2 1/2	4.437	—	—	5 5/8	1	16	
J-A	7 3/4	3 3/16	5.140	—	—	6 1/4	1	22.5	
M-A	9 1/2	5 3/16	6.494	9.25	3 9/16	7 7/8	2	50	STD Mount Only
N-A	10 1/2	6 1/4	6.990	10.25	4 1/2	8 1/2	2	75	
P-A	13	7 1/4	8.240	—	—	10	2	155	

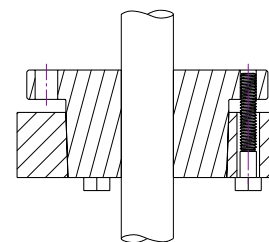
\*TOLERANCE OF D DIMENSION OR P WHERE APPLICABLE

JA-A THROUGH J-A= (+0.000-0.002)

M-A THROUGH P-A= (+0.000-0.003)



REVERSE MOUNT



STANDARD MOUNT