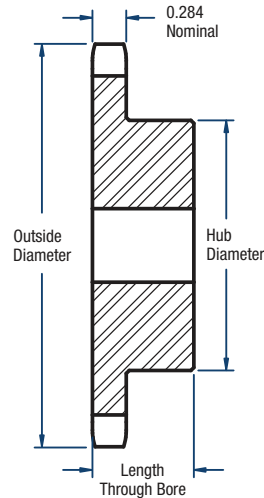


40 Sprockets



BLACKSTAR®

1/2" Pitch Stainless Steel



TYPE B

Single- Type B

No. of Teeth	Catalog Number	Diameters (in)		Bore (in)		Hub (in)		Approx. Weight (lbs)
		Outside	Pitch	Min.	Max.	Diameter	Length Through Bore	
8	40B8SS	1.50	1.307	1/2	1/2	31/32*	7/8	0.18
9	40B9SS	1.67	1.462	1/2	9/16	1-1/16*	7/8	0.20
10	40B10SS	1.84	1.618	1/2	3/4	1-1/4*	7/8	0.28
11	40B11SS	2.00	1.775	1/2	13/16	1-3/8*	7/8	0.36
12	40B12SS	2.17	1.932	1/2	15/16	1-9/16*	7/8	0.44
13	40B13SS	2.33	2.089	1/2	1-1/16	1-9/16	7/8	0.50
14	40B14SS	2.49	2.247	1/2	1-1/8	1-11/16	7/8	0.60
15	40B15SS	2.65	2.405	5/8	1-1/4	1-13/16	7/8	0.68
16	40B16SS	2.81	2.563	5/8	1-3/8	2	7/8	0.82
17	40B17SS	2.98	2.721	5/8	1-7/16	2-1/8	1	1.06
18	40B18SS	3.14	2.879	5/8	1-1/2	2-5/16	1	1.24
19	40B19SS	3.30	3.038	5/8	1-3/4	2-1/2	1	1.42
20	40B20SS	3.46	3.196	5/8	1-7/8	2-5/8	1	1.60
21	40B21SS	3.62	3.355	5/8	1-7/8	2-3/4	1	1.68
22	40B22SS	3.78	3.513	5/8	1-7/8	2-7/8	1	1.81
23	40B23SS	3.94	3.672	5/8	2	3	1	2.18
24	40B24SS	4.10	3.831	5/8	2-1/4	3-1/4	1	2.20
25	40B25SS	4.26	3.989	5/8	2-1/4	3-1/4	1	2.30
26	40B26SS	4.42	4.148	5/8	2-1/4	3-1/4	1	2.40
28	40B28SS	4.74	4.465	5/8	2-1/4	3-1/4	1	2.75
30	40B30SS	5.06	4.783	5/8	2-1/4	3-1/4	1	2.88
32	40B32SS	5.38	5.101	5/8	2-1/4	3-1/4	1	3.16
35	40B35SS	5.86	5.578	5/8	2-1/4	3-1/4	1	3.32
36	40B36SS	6.02	5.737	5/8	2-1/4	3-1/4	1	3.58
40	40B40SS	6.65	6.373	3/4	2-3/8	3-1/2	1	4.28
45	40B45SS	7.45	7.168	3/4	2-3/8	3-1/2	1	4.68
48	40B48SS	7.93	7.645	3/4	2-3/8	3-1/2	1	5.84
54	40B54SS	8.89	8.599	3/4	2-3/8	3-1/2	1	6.42
60	40B60SS	9.84	9.554	3/4	2-3/8	3-1/2	1	7.00

*Has a recessed groove in the hub for chain clearance.

NOTE: Maximum bores shown will accommodate a standard keyseat and a setscrew over the keyseat. Slightly larger bores are possible with no keyseat, a shallow keyseat, or a setscrew at an angle to the keyseat.